



قائمة الاسئلة

الاحياء الدقيقة العملي المستوى الثالث - طب وجراحة الفم والاسنان

د/الاء اللبني

- 1) In reporting of AFB the +3 means
 - 1) - 1-9AFB per 10 felid
 - 2) 1-9AFB per one filed
 - 3) - <9 AFB per one filed
 - 4) - 1-9AFB per 100 felid
- 2) Safty sign which color is blue known as
 - 1) - Safe condition
 - 2) - prohibitions
 - 3) Mandatory
 - 4) - Warning
- 3) The metachromatic granules it named because it havn't ability to changing color when staid
 - 1) - True
 - 2) False
- 4) Amorphous material which surrounds many bacterial species as their outermost, usually polysaccharide can inhibit phagocytosis
 - 1) - Spores
 - 2) - Flagella
 - 3) - Fambriae
 - 4) Capsule
- 5) Transfer of cell-free or "naked"DNA from one cell to another
 - 1) - Conjugation
 - 2) - Transduction
 - 3) Transformation
 - 4) - Non of above
- 6) Phase which plateu in number of living bacteria cells the GR=death equal growth
 - 1) - Death phase
 - 2) - Log phase
 - 3) Stationary phase
 - 4) - Lag phase
- 7) Non ionizing radiation like X ray which used in operation room and isolation room
 - 1) - True
 - 2) False
- 8) Chemicals that can modification of protein
 - 1) Hydrogen peroxide
 - 2) - Ethanol 70%
 - 3) - Phenol
 - 4) - Stains as crystal violet
- 9) Done for three consecutive days for 30 minute each day e.g TB media this is called
 - 1) - Boiling water
 - 2) Tyndallization
 - 3) - Pasteurization
 - 4) - Radiation
- 10) Lowe-temperature sterilization is used for vaccines at 60C° for 1 hour in water bath
 - 1) True
 - 2) - False



- 11) It is constantly present at low level in specific population
- 1) - Pandemic
 - 2) - Epidemic
 - 3) - Chronic carrier
 - 4) Endemic
- 12) It occurs much frequently than usual
- 1) Epidemic
 - 2) - Pandemic
 - 3) - Endemic
 - 4) - Virulence
- 13) From disadvantage of it is evaporation this is
- 1) - Stained smear
 - 2) Untainted smear
 - 3) - all of above
 - 4) - Non of above
- 14) From advantage of it save for handle this is
- 1) Stained smear
 - 2) - Untainted smear
 - 3) - all of above
 - 4) - Non of above
- 15) From characteristics of simple stain are
- 1) - Contain only one dye
 - 2) - Divide into three type acidic, basic and neutral stain
 - 3) - Used to different between two group of bacteria
 - 4) Contains only one dye and divided into three type acidic, basic and neutral
- 16) High molecular-weight polymers of polyphosphate known as
- 1) - capsule
 - 2) Metachromatic granules
 - 3) - Spore
 - 4) - Flagella
- 17) Albert stain is used for stain *Cronyobacterium diphtheriae bacillis*
- 1) - True
 - 2) False
- 18) Example for spore forming bacteria is *Clostridium spp* and *Bacillus spp*
- 1) True
 - 2) - False
- 19) The used of iodine solution is to
- 1) - Lipids extracted and color removal
 - 2) Fixation of crystal violet in cell wall of gram +ve
 - 3) - Fixation of crystal violet in cell wall of gram -ve
 - 4) - Make complex with sefranine
- 20) *Bacillus anthrax* is type of
- 1) - Gram positive cocci
 - 2) - Gram negative bacili
 - 3) Gram positive bacili
 - 4) - Gram negative cocci
- 21) *Nisseria minnigaitis* is type of
- 1) - Gram positive cocci
 - 2) - Gram negative bacili





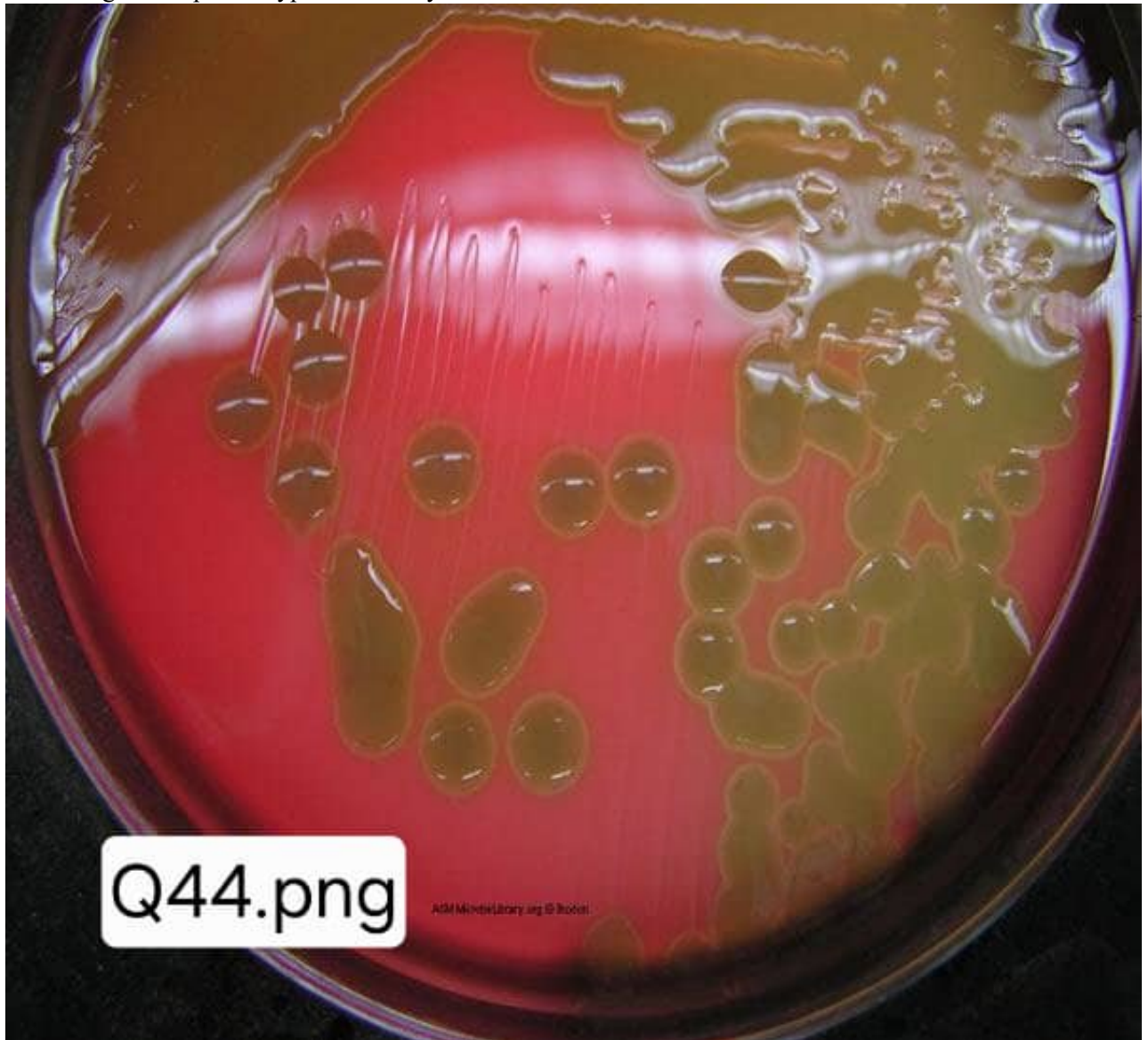
- 3) - Gram positive bacili
4) Gram negative cocci
- 22) Are example for Gram positive bacili
1) Cronybacterium diphtheriae
2) - Escherichia coli
3) - Klebsiella pneumoniae
4) - Staphylococcus aureus
- 23) False result in gram stain happened if you take from colony that age 24 hours
1) .False
2) - .True
- 24) We used the candel jar for provide
1) - Anaerobic condition
2) - Aerobic condition
3) Microaerophilic condition
4) - Anaerobic and microaerophilic condition
- 25) Pscrophilic means the bacteria which
1) - living in medium temperatures (10-37C°)
2) - living in hogh temperature(45-70C°)
3) living in cold temperatures (0-10C°)
4) - living in cold temperature (-1-0C°)
- 26) Semisolid media are usually used for bacteria mobility studies and agar percentage 1-2%
1) - .True
2) .False
- 27) Is media in which type is Enrichment and used for anaerobic bacteria
1) Cooked meat medium
2) - Tryptone soya broth (TSB)
3) - Blood agar
4) - Chocolate agar
- 28) MacConkey agar inhibited growth ofand allow growth of
1) - Inhibit gram-ve allow gram+ve
2) - Inhibit gram+ve and -ve
3) Inhibit gram+ve and allow gram -ve bacteria
4) - Inhibit gram+ve and allow gram+ve
- 29) On MSA the bacteria which produce yellow colony is
1) - Streptococcus pyogenes
2) Staphylococcus aurues
3) - Staphylococcus epidermidis
4) - Staphylococcus saprophyticus
- 30) Used to difeferential between Vibro cholerae and V.parahaemolyticus
1) - MSA
2) - MacConkey
3) TCBS
4) - TSB
- 31) Type is differential only and used in urine specimen this media is
1) CLED
2) - MacConkey
3) - TCBS
4) - MSA
- 32) Example for fastidious organisms that grow in chocolate agar is



- 1) - Hemophilus influenzae
 - 2) - Streptococcus pneumoniae
 - 3) - Nisseria minnigaitis
 - 4) All of above
- 33) Calculate the gram of powder that is required in preparation of MSA media if you know that 24g make 1 liter and you will prepare for 15 petri dish
- 1) - 2.4g
 - 2) - 2.7g
 - 3) 7.2g
 - 4) - 72g
- 34) Calculate the amount of Distal water and powder grams that is required in preparation of TSA media if you know that 28g make 1 liter and you will prepare for 25 petri dish
- 1) 500ml ,14 g
 - 2) - 14ml,500g
 - 3) - 5000ml,24g
 - 4) - 28g,500ml
- 35) Blood specmine for (C/S)
- 1) - Consider as sterial specimen
 - 2) - Non sterile specimen
 - 3) - We Used TSB for culture it
 - 4) It sterile specimen and we used TSB for inoculated it
- 36) Gram positive cocci culster on arrangement catalase +ve cogulase-ve sensitive to Novobiocin it's
- 1) - Staphylococcus aureus
 - 2) Staphylococcus epidermidis
 - 3) - Staphylococcus saprophyticus
 - 4) - Streptococcus pyogenes
- 37) We don't used citrate plasma in coagulase test because
- 1) - Citrate-utilizing bacteria which can causes clotting of the plasma leading to false negative
 - 2) Citrate-utilizing bacteria which can causes clotting of the plasma leading to false positive
 - 3) - Citrate-utilizing bacteria which cannot causes clotting of the plasma leading to false positive
 - 4) - Citrate-utilizing bacteria which cannot causes clotting of the plasma leading to false negative
- 38) We dont used media more than 24 hour in catalase test because
- 1) Ageing lead to losing ability to produce enzyme leading to false Negative results
 - 2) - Ageing lead to losing ability to produce enzyme leading to false Postive result
 - 3) - Ageing lead to not losing ability to produce enzyme leading to false Postive result
 - 4) - Ageing lead to not losing ability to produce enzyme leading to false Negative result
- 39) Inhibition of cell wall antibiotic example is
- 1) - B-lactams penicillin and effect is bacteriostatic
 - 2) B-lactams penicillin and effect is bactericidal
 - 3) - Tetracycline effect is bacteriostatic
 - 4) - Tetracycline effect is bacterocidal
- 40) Rifamycin mechanism is
- 1) - Inhibition cell wall synthesis, bactericidal
 - 2) - Inhibition protine synthesis, bacteriostatic
 - 3) Inhibition of nucleic acid synthesis, bacteriostatic
 - 4) - Inhibition of nucleic acid synthesis, bactericidal
- 41) Nesseria gonorrhea is
- 1) - Gram +ve cocci maltose ferment
 - 2) Gram-ve cocci maltose non ferment



- 3) - Gram-ve cocci maltose ferment
4) - Gram+ve cocci maltose non ferment
42) Gram -ve bacili that cuses plagues or black death also oxidase -ve H2S-ve non lactose ferment
1) - Bacillus anthrax
2) - Cronybacterium diphtheriae
3) - Clostridium perfringen
4) + Yersinia pestis
43) Gram +ve bacili anaerobic that causes gass gangrene
1) + Clostridium perfringen
2) - Clostridium botulism
3) - Cronybacterium spp
4) - Bacillus anthrax
44) According to this pic the type of haemolysis is



- 1) + Alpha hemolysis
2) - Beta hemolysis
3) - Gamma hemolysis



- 4) - Non of above
45) According to this pic the result of SIM





- 1) - H₂S-ve ,motile+ve,indole_-ve
 - 2) - H₂S -ve,motile-ve,Indol-ve
 - 3) + H₂S +ve,motile+ve,indol-ve
 - 4) - H₂S +ve,motile+ve,indol+ve
- 46) According to this pic of KIA the results is



Q46.jpg





- 1) K/A,gass+ve,H2S+ve
 - 2) K/A,gass+ve,H2S-ve
 - 3) K/A,gass-ve,H2S-ve
 - 4) A/A,gass+ve,H2S+ve
- 47) According to this pic the media is.....and selective agent is



- 1) TCBS selective agent is bile salt and crystal violet
- 2) TCBS selective agent is ox bile and sodium cholate
- 3) MSA selective agent is NaCl 7.5%



- 4) - MacConkey selective agent is sodium deoxycholate
48) According to this pic this media isand used for

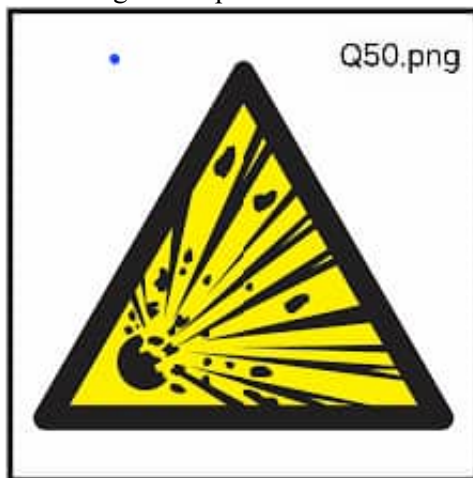


- 1) - TCBS different vibrio spp
2) - MacConkey used for isolation if gram-ve
3) - EMB used for isolation faecal coliform
4) + MSA used for different between Staphylococcus spp
49) According to this pic the term used to describe antibiotic is



- 1) - Synergism
- 2) - Antamony
- 3) + Antagonism
- 4) - Non if above

50) According to this pic the hazerd is



- 1) - Biological hazard
- 2) - health hazerd
- 3) - Radiation hazard
- 4) + Expolsive hazerd