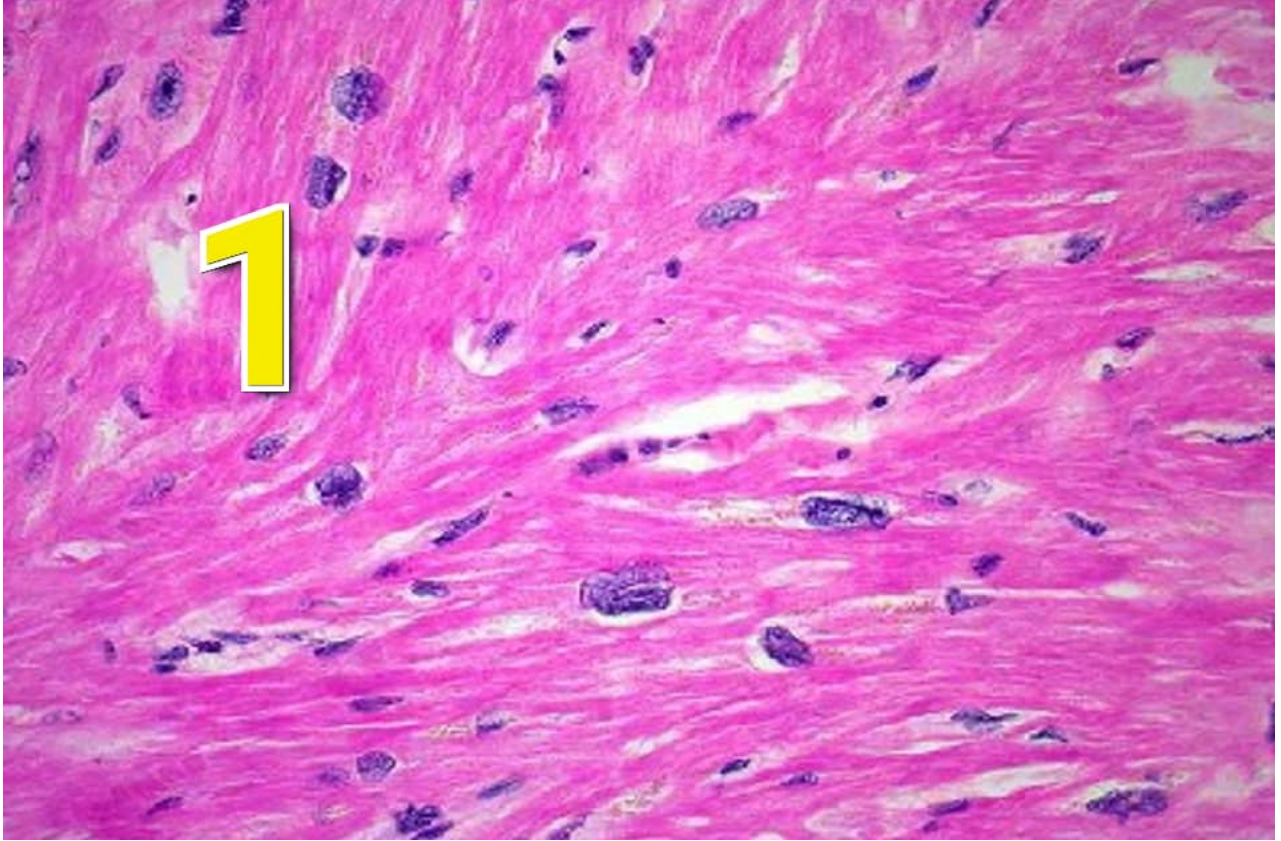


قائمة الاسئلة

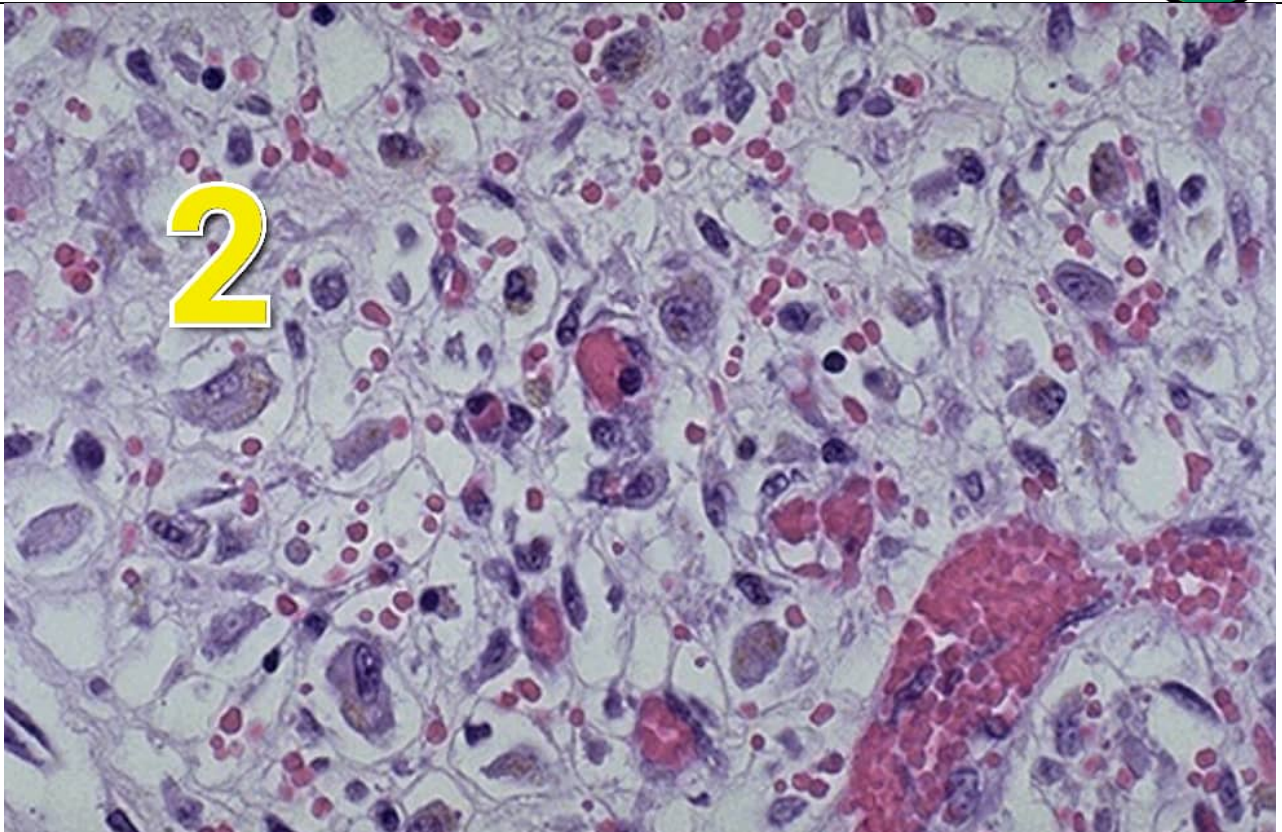
امتحان نهاية الفصل الدراسي الأول - للعام الجامعي 1446 هـ - الموافق -2025/2024م-كلية طب وجراحة الفم والاسنان :: التشريح المرضي
...../د

1) Identify the following slide



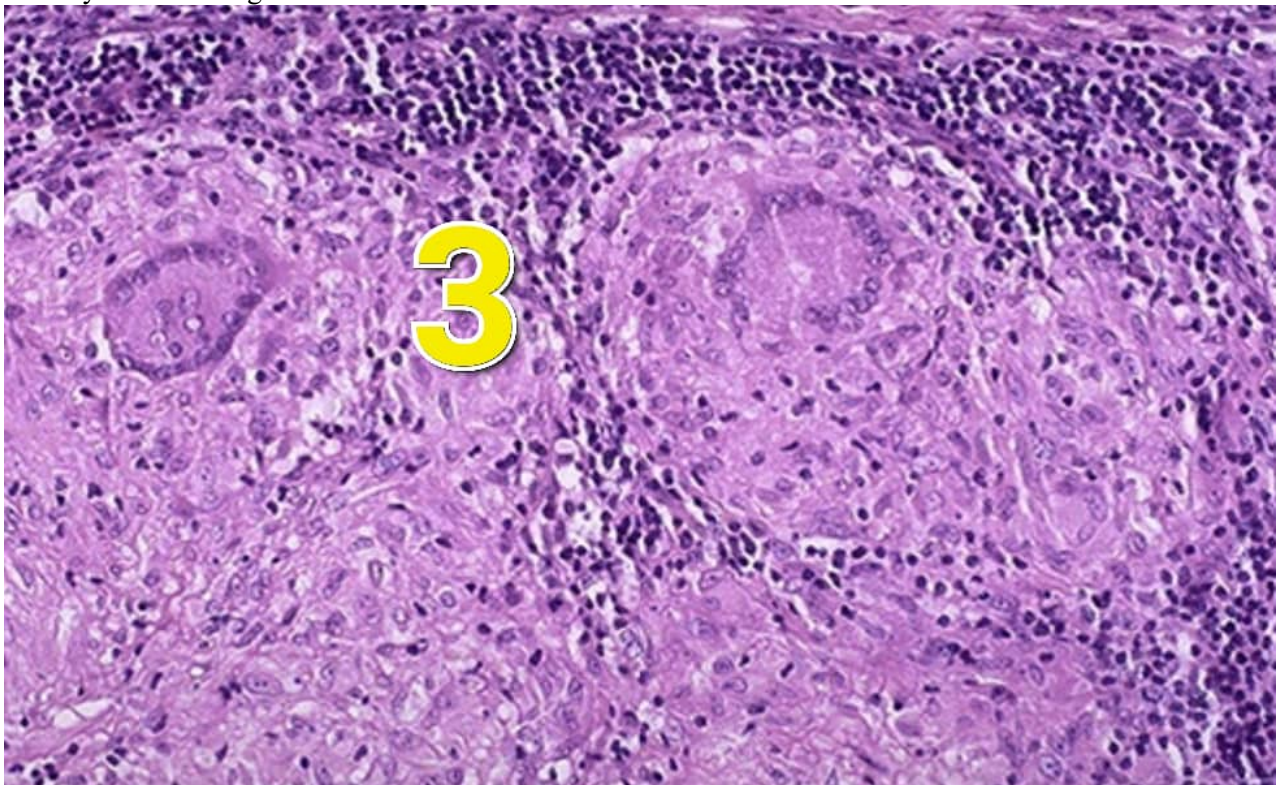
- 1) - Schistosomiasis
- 2) - Chronic specific inflammation
- 3) - Granulomatous inflammation
- 4) Hypertrophy

2) Identify the following slide



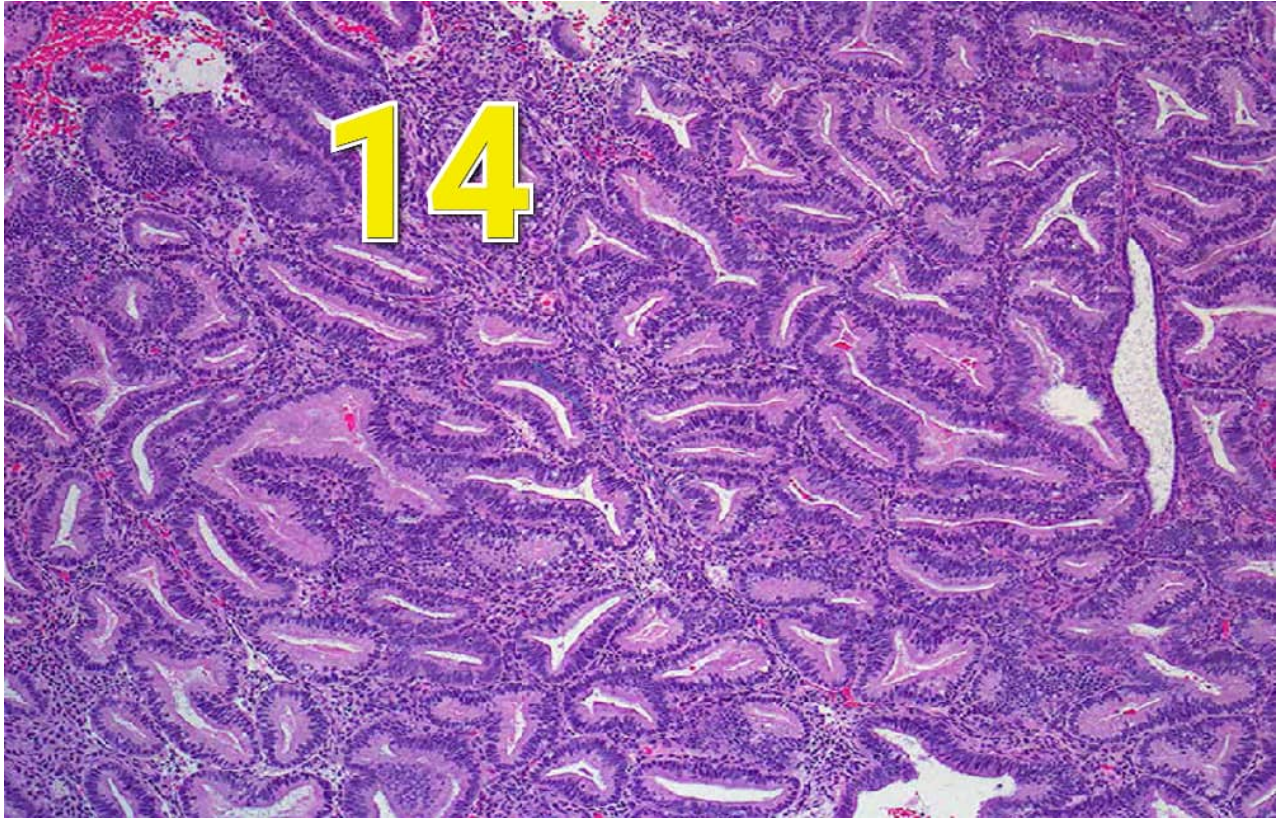
- 1) - Suppurative inflammation
- 2) - Chronic specific inflammation
- 3) + Granulation tissue

3) Identify the following slide

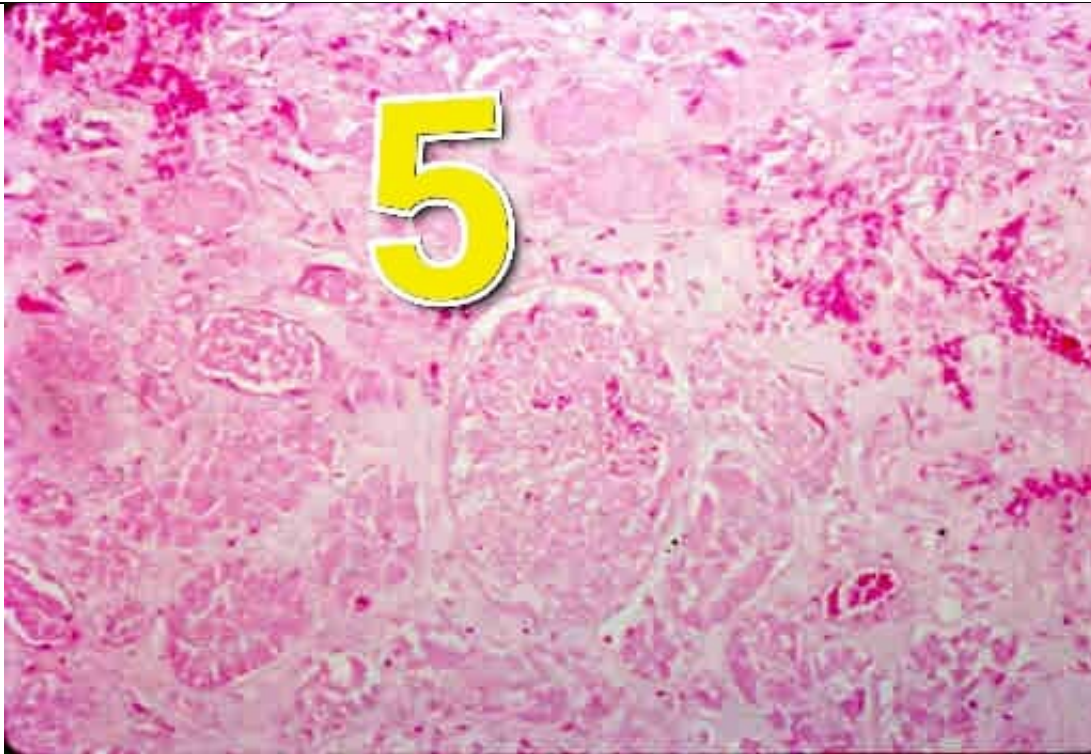




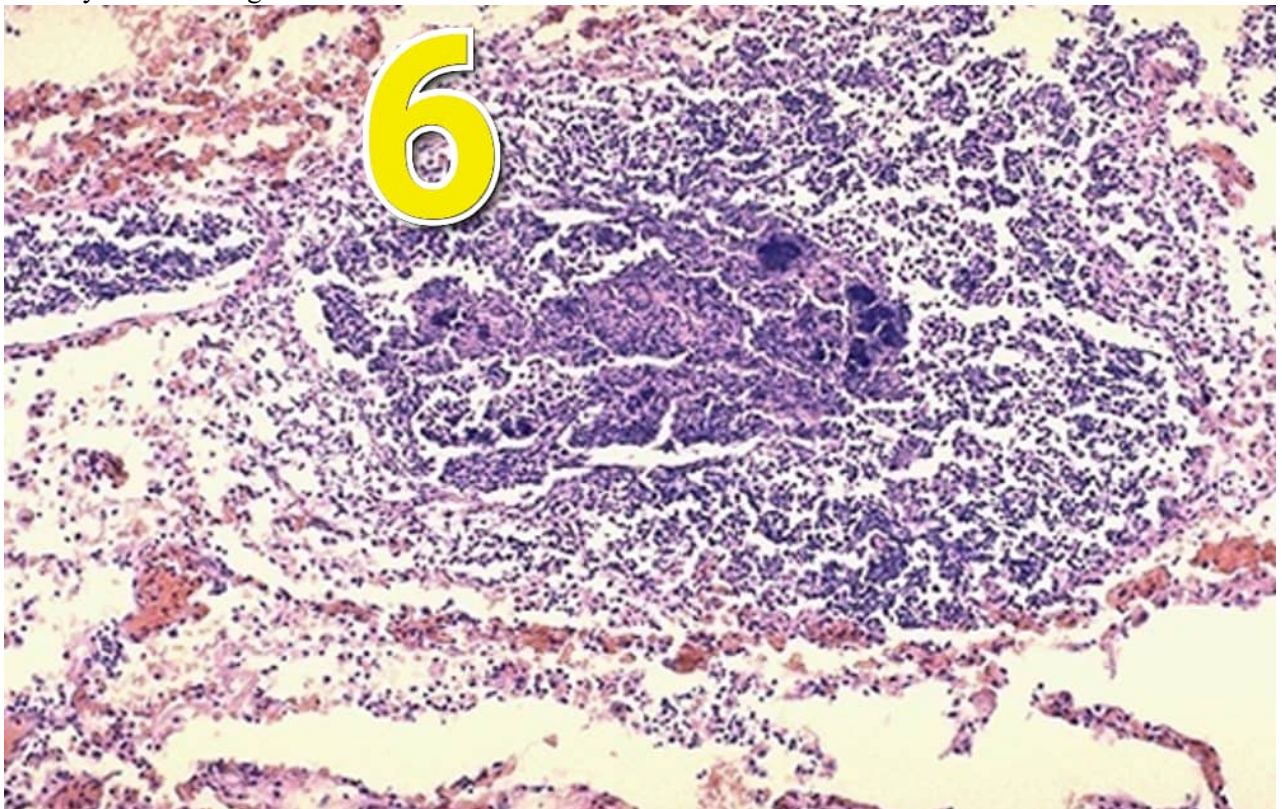
- 1) - Suppurative inflammation.
 - 2) - Chronic specific inflammation
 - 3) Granulomatous inflammation
 - 4) - Non suppurative inflammation.
- 4) Identify the following slide:



- 1) - Caseous necrosis
 - 2) Fat necrosis
 - 3) - Fatty changes
 - 4) - Coagulative necrosis
- 5) .Identify the change with pink appearance within the damaged vascular wall indicated by arrow:



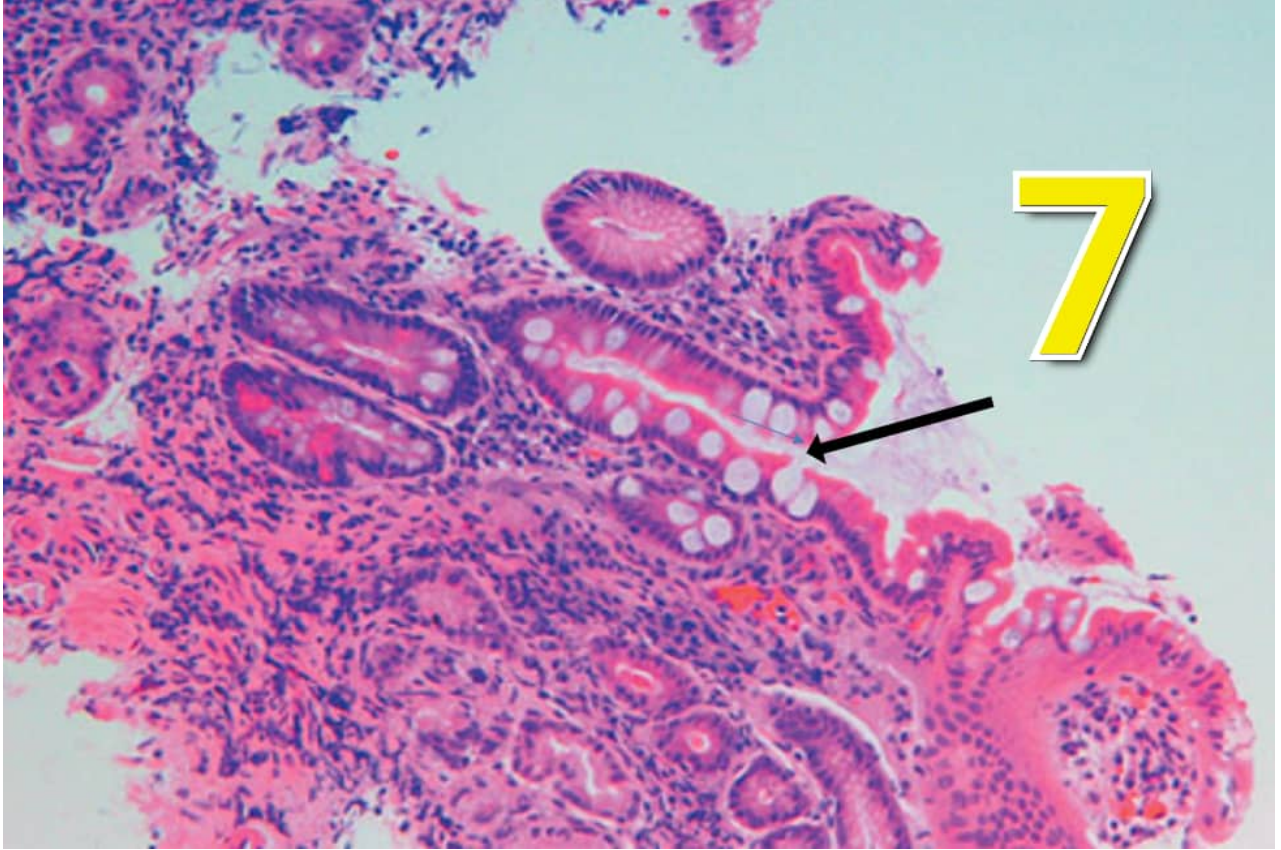
- 1) - Fibrinoid necrosis
 - 2) - Squamous metaplasia.
 - 3) + Coagulative necrosis
 - 4) - Epithelial dysplasia.
- 6) Identify the following slide:



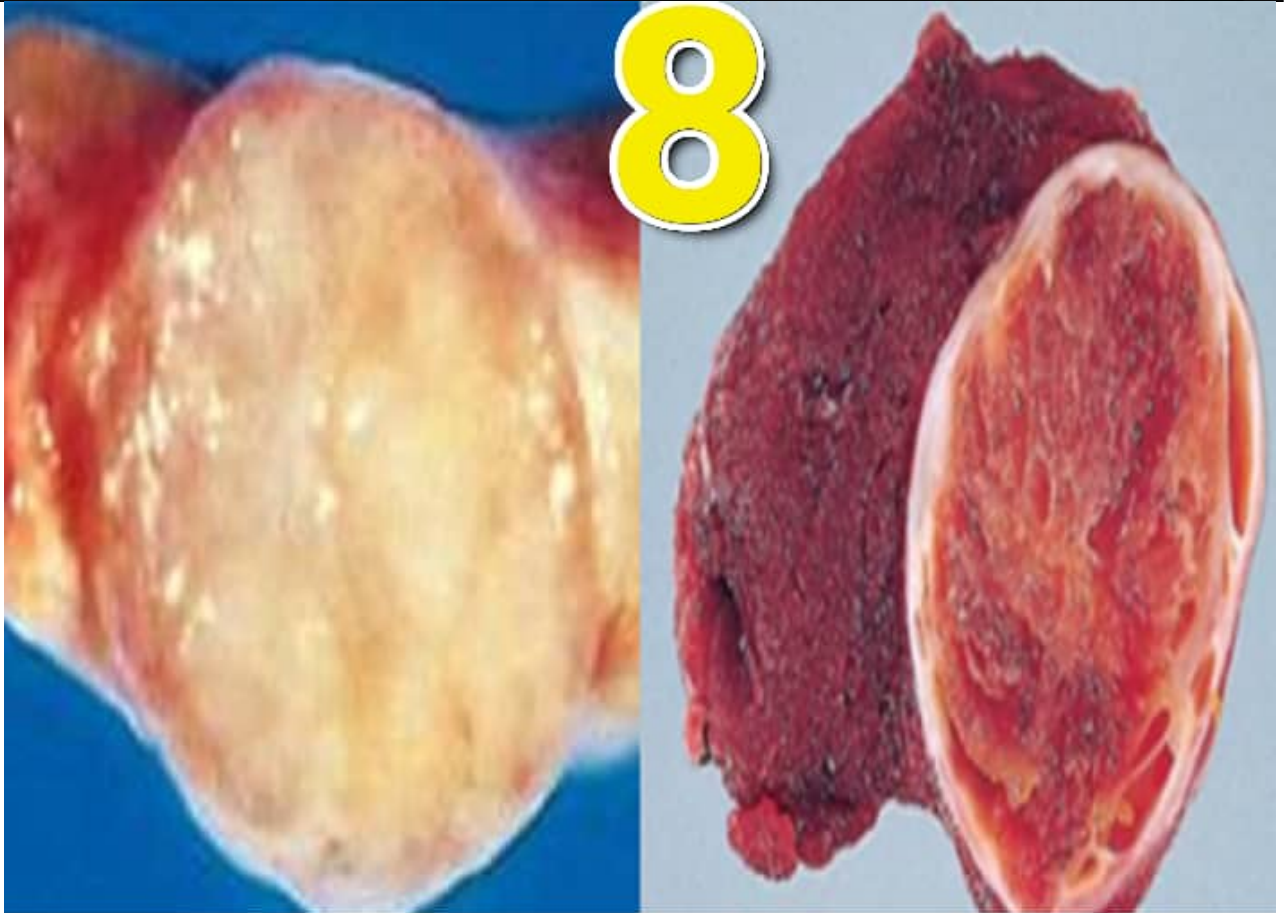


- 1) - Non suppurative inflammation.
- 2) - Chronic specific inflammation,
- 3) - Granulomatous inflammation,
- 4) + Suppurative inflammation (acute abscess).

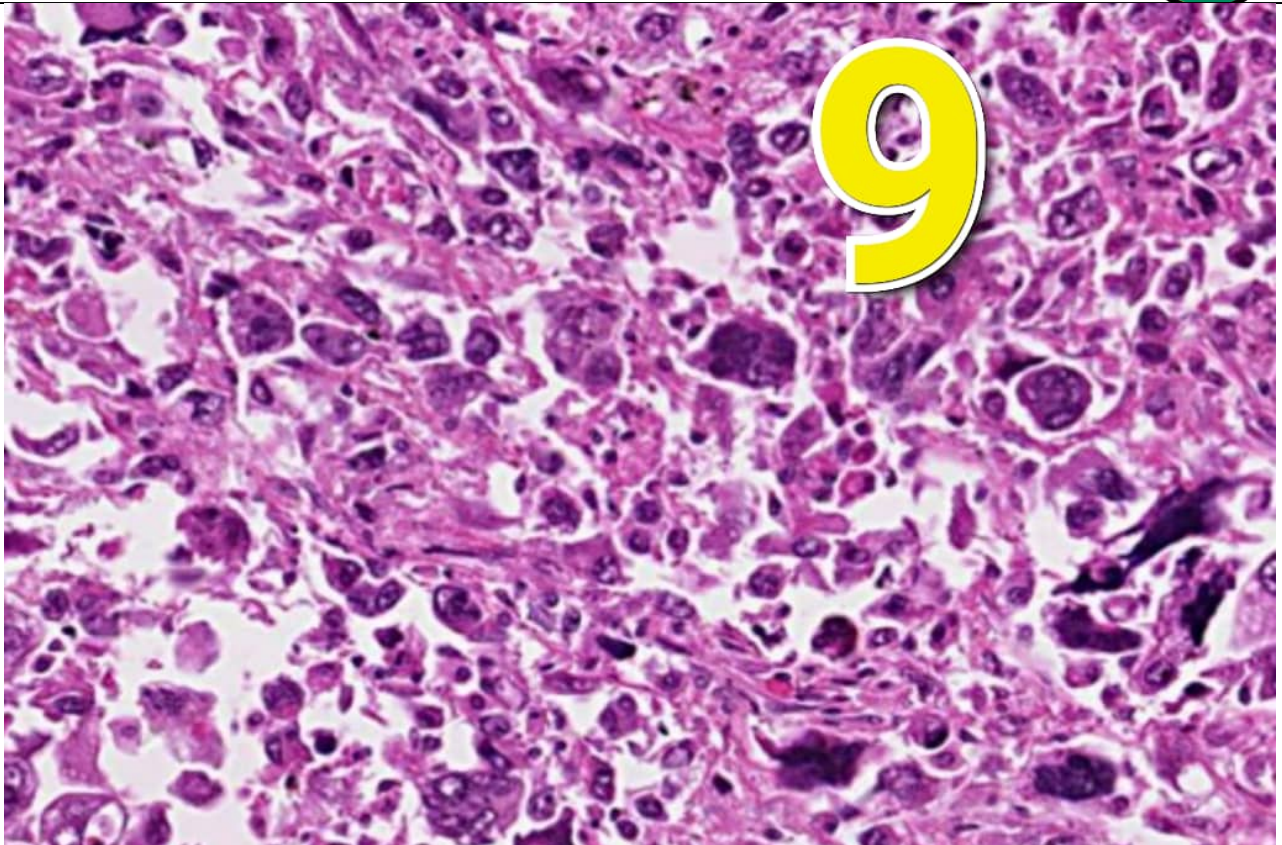
7) Identify the cells indicated by arrow:



- 1) + Goblet cells
 - 2) - Squamous cells
 - 3) - Inflammatory cells
 - 4) - Squamous cell papilloma
- 8) .Identify the following slide:

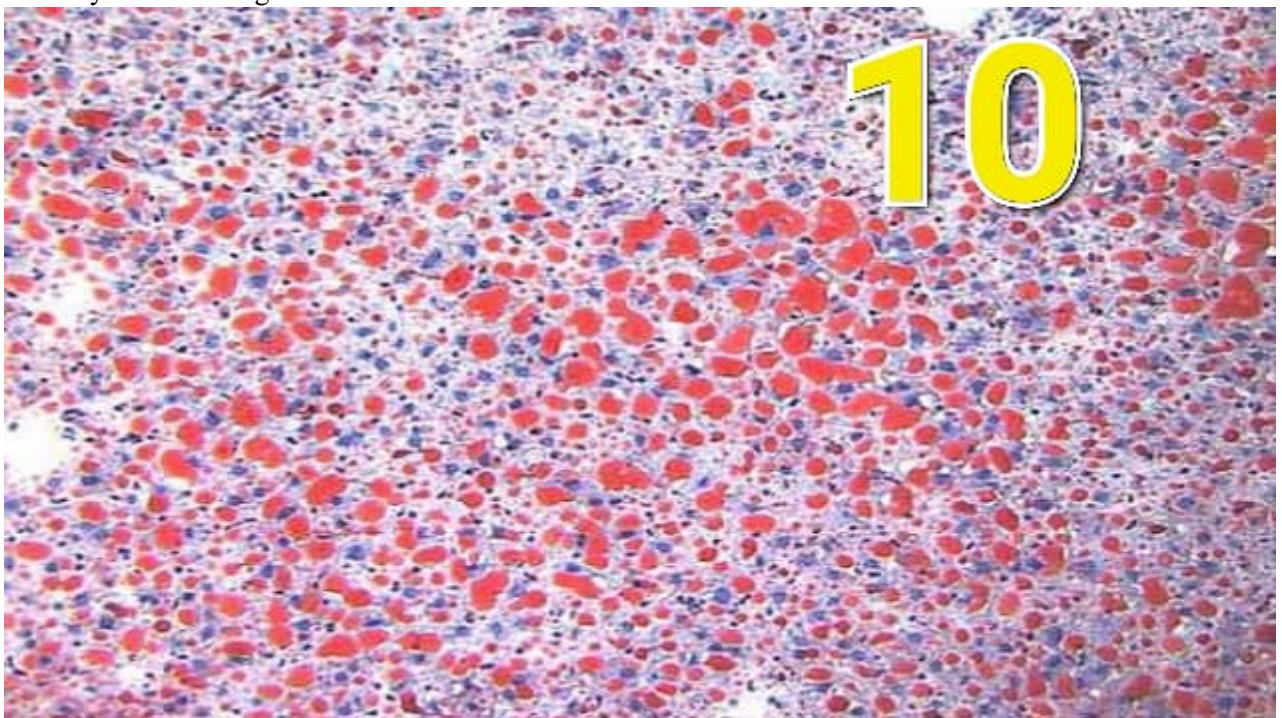


- 1) + Adenoma within the solid organs
 - 2) - Adenoma from surface epithelium
- 9) .Identify the following slide:



9

- 1) - Inflammatory cells
 - 2) - Fibroblasts
 - 3) + Anaplastic cells
- 10) .Identify the following slide:



10

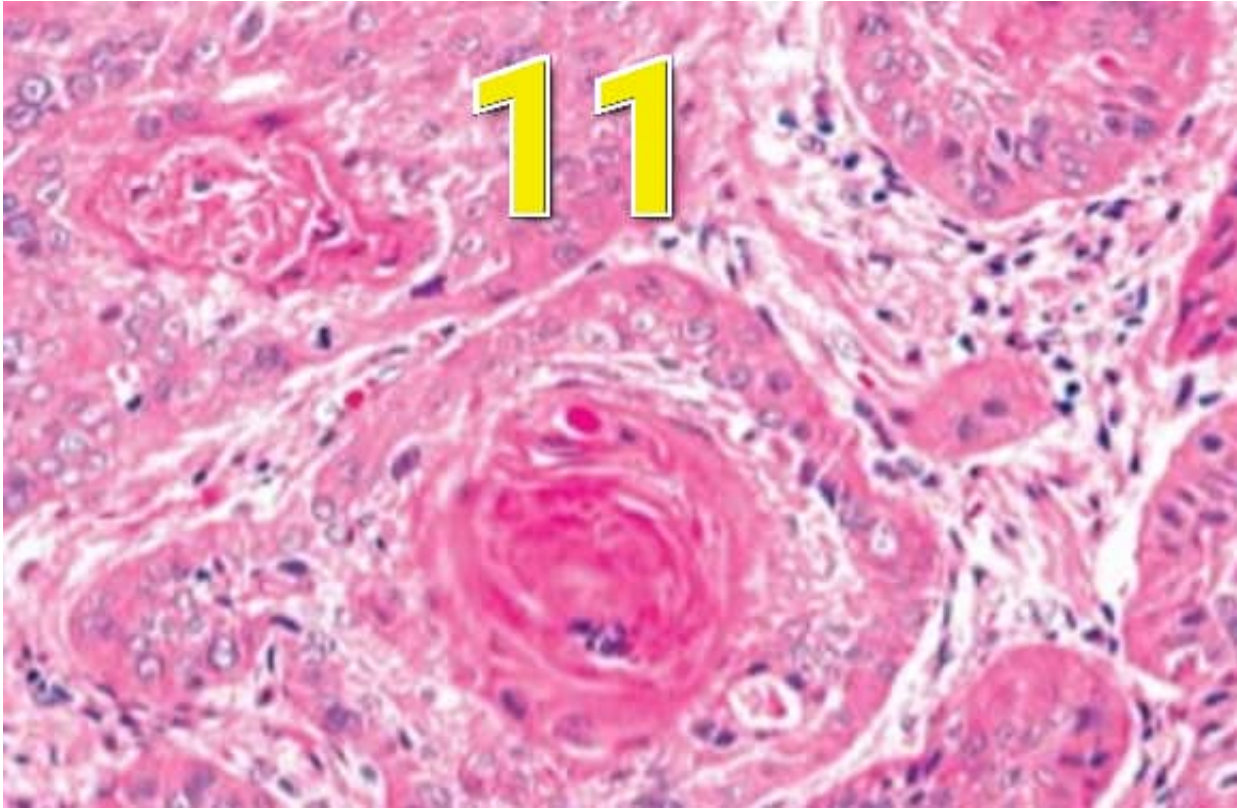
- 1) - Caseous necrosis





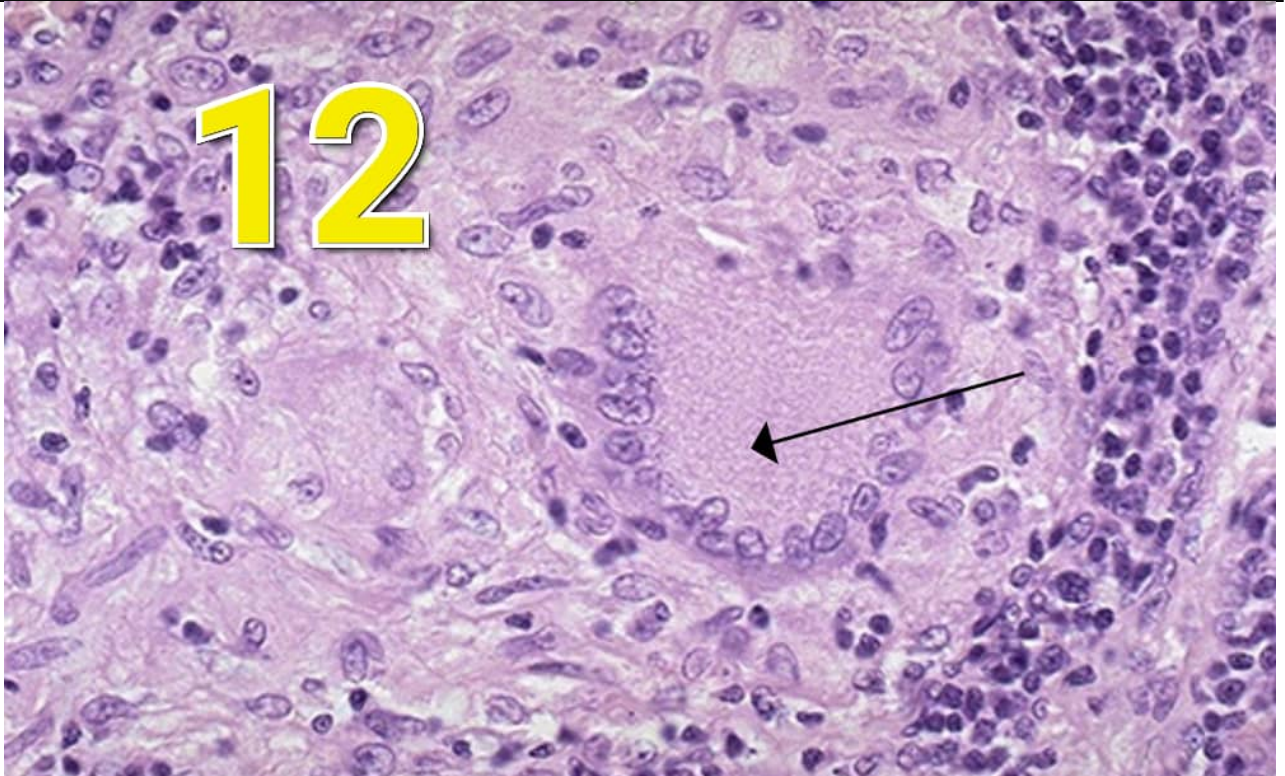
- 2) - Coagulative necrosis
- 3) Fatty Changes (Steatosis),
- 4) - Fat necrosis

11) Identify the following slide:



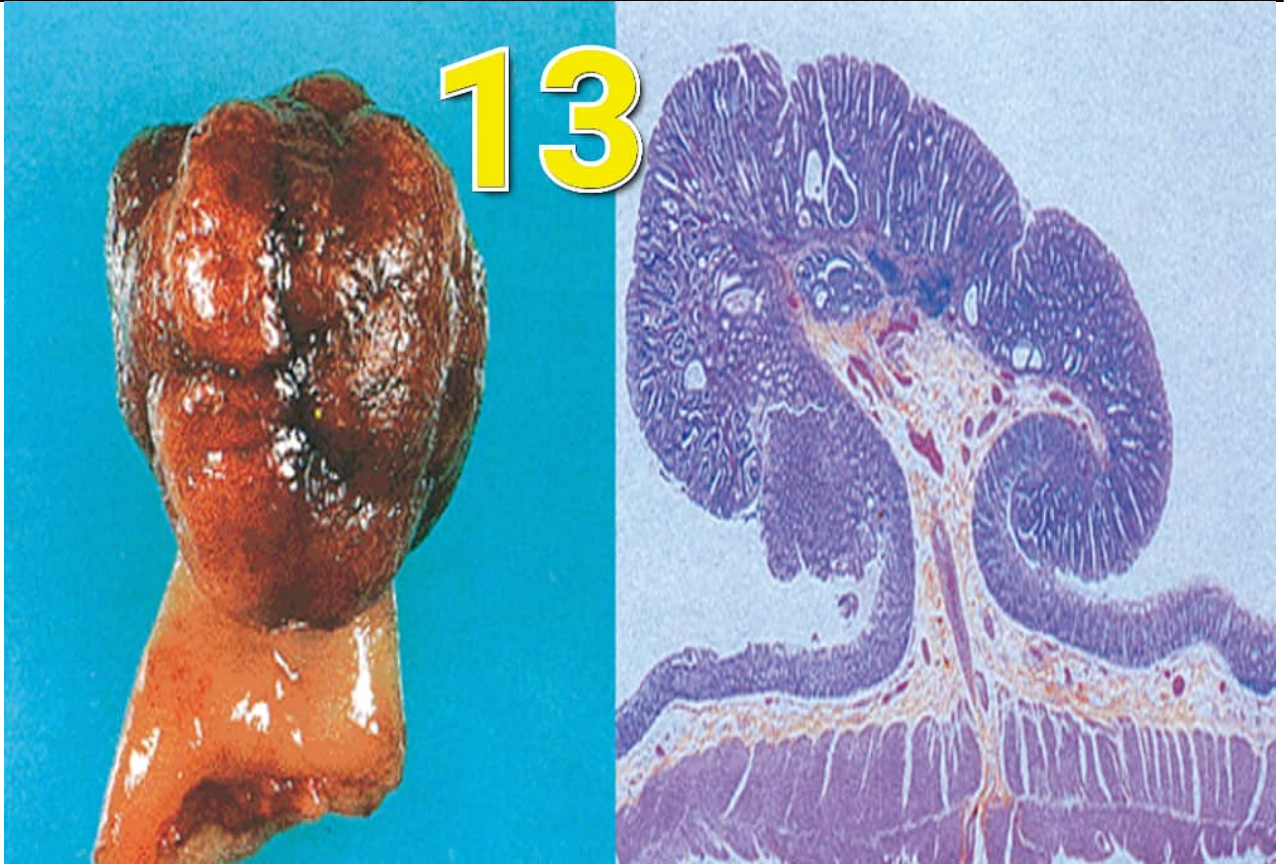
- 1) Squamous cell carcinoma.
- 2) - Adenomatous polyp
- 3) - Squamous cell papilloma.

12) .Identify the type of cell indicated by arrow:

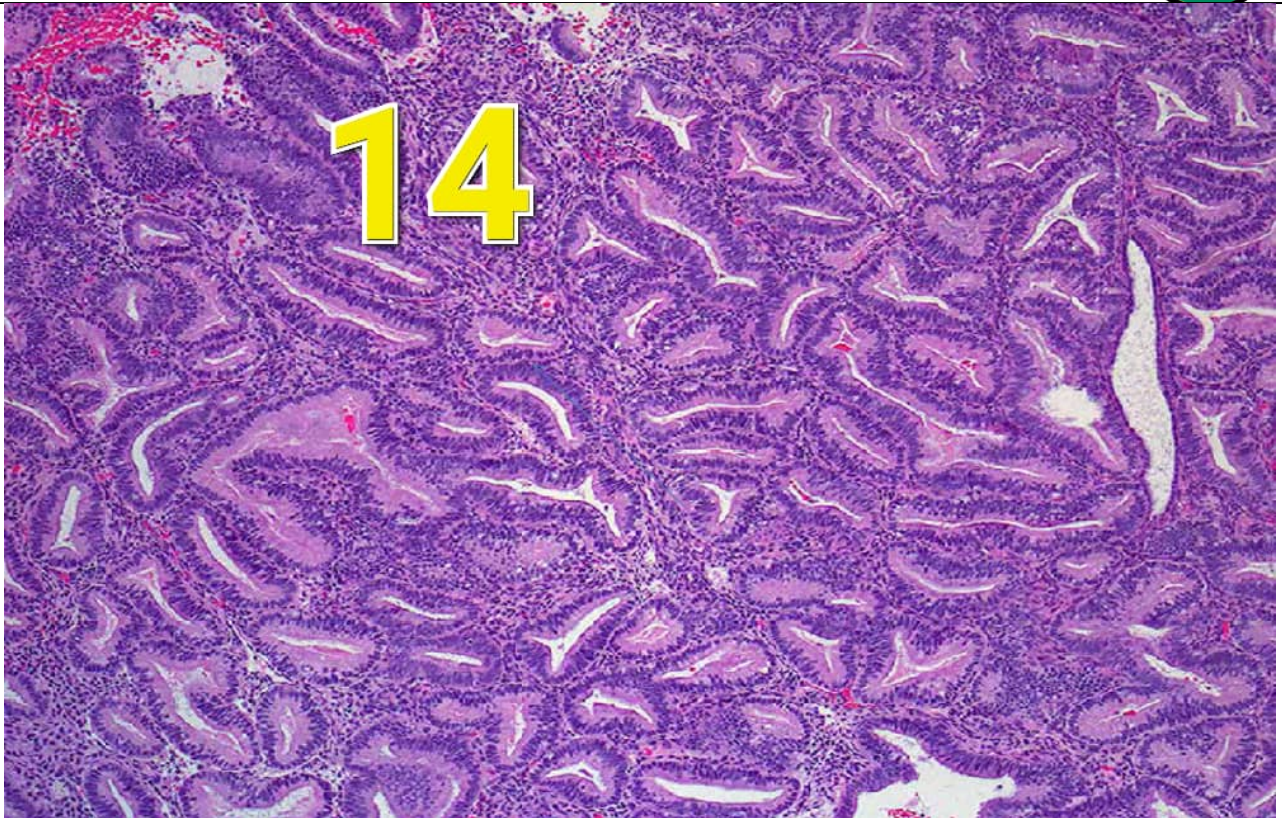


- 1) - Lymphocytes and plasma cells
 - 2) - Foreign body giant cell
 - 3) + Langhans giant cell
- 13) .Identify the following slide:

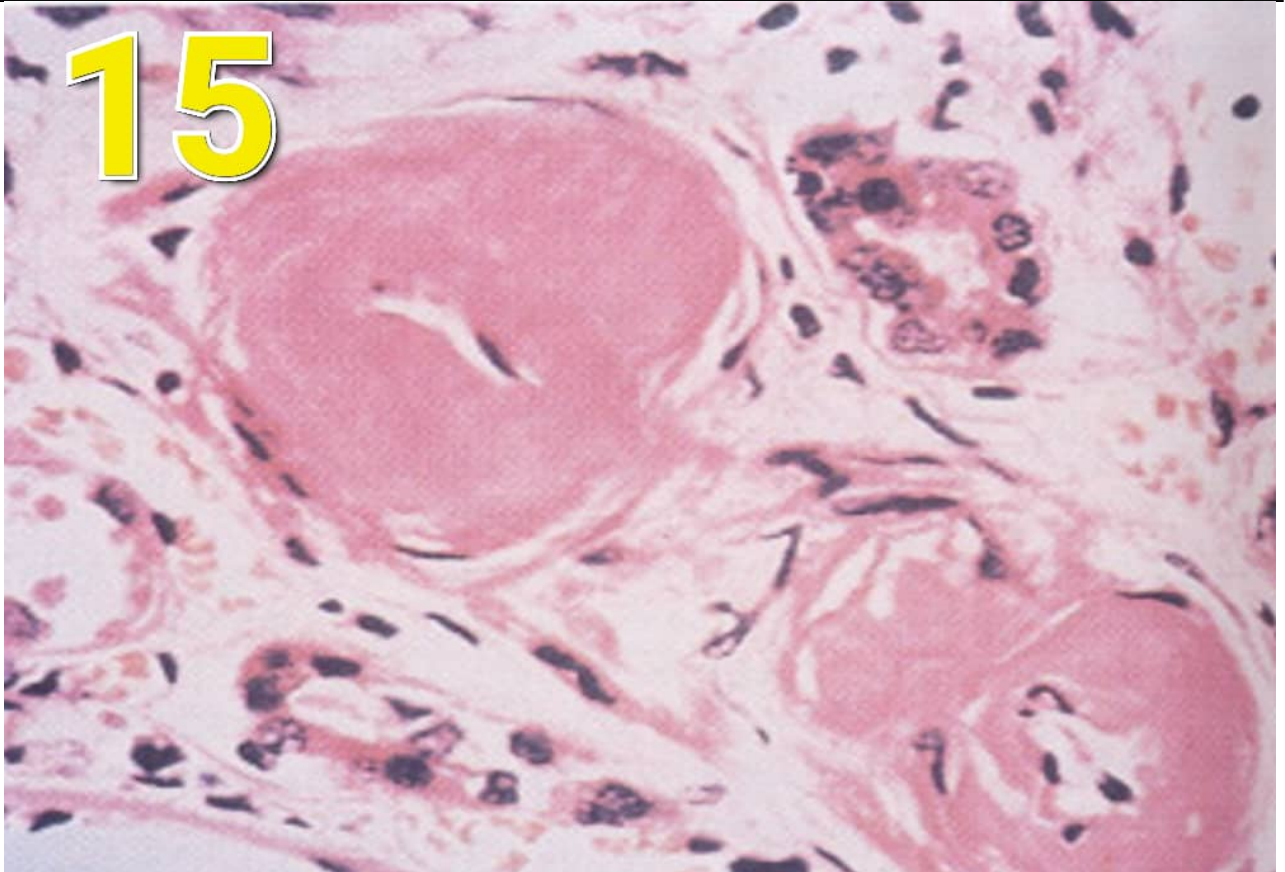




- 1) - Squamous cell papilloma.
 - 2) Mucosal cell papilloma
 - 3) - Adenocarcinoma
- 14) .Identify the following slide:



- 1) Complex endometrial hyperplasia.
 - 2) Chronic inflammation.
 - 3) Benign prostatic hyperplasia
 - 4) Thyroid hyperplasia
- 15) Identify this change:

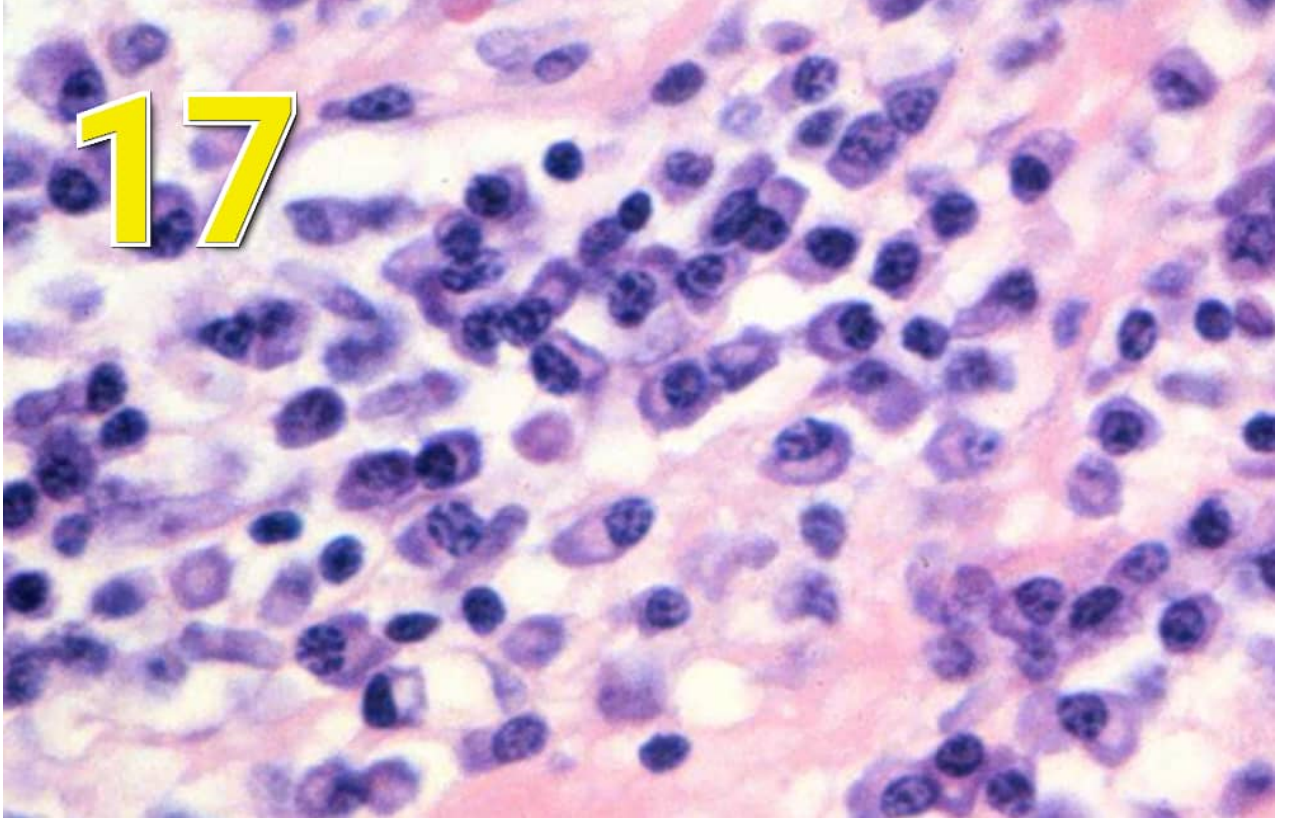


- 1) Thickened-walled blood vessel
 - 2) Muscular hypertrophy
 - 3) Squamous cell carcinoma
 - 4) Squamous cell papilloma
- 16) .Identify the change indicated by arrow:



- 1) - Fat necrosis with chalky appearance.
- 2) - Coagulative necrosis
- 3) Caseous necrosis in pulmonary tuberculosis

17) identify the following slide:



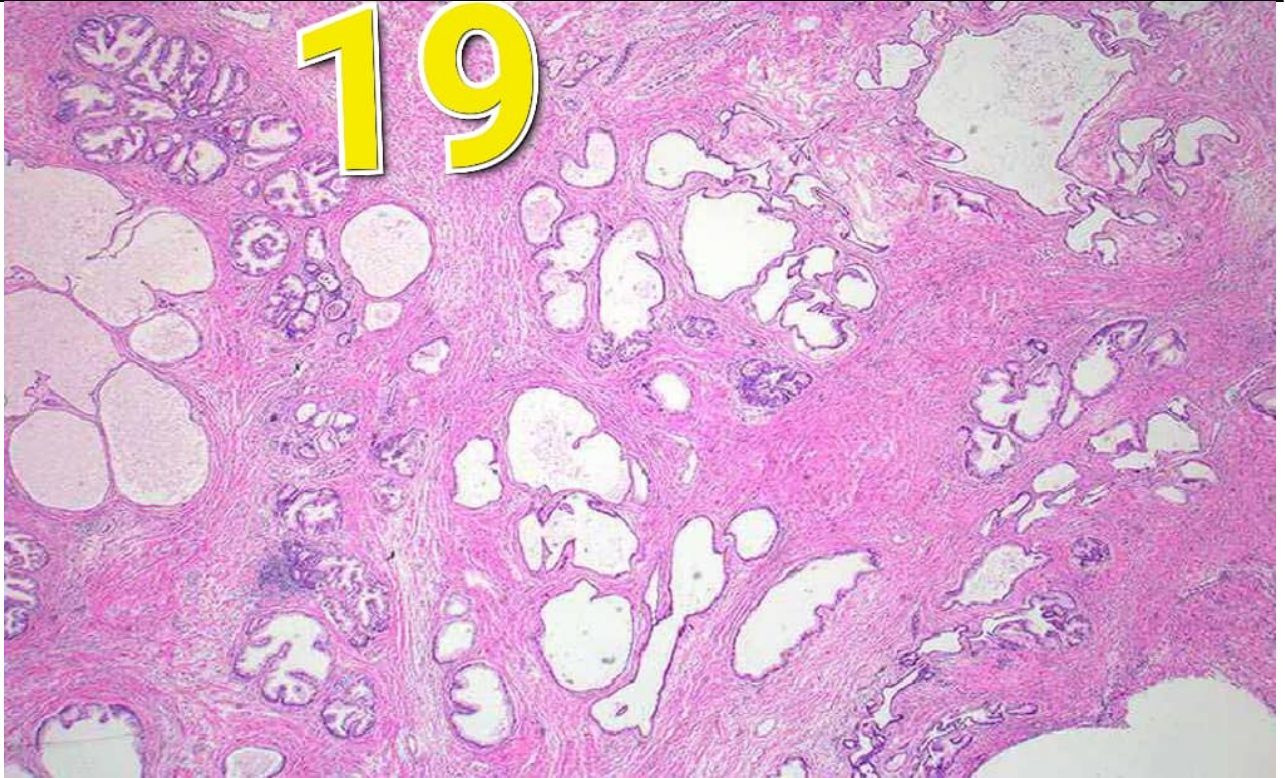
- 1) + Mixed chronic inflammatory cells
- 2) - Acute inflammatory cells

18) .Identify the following slide:

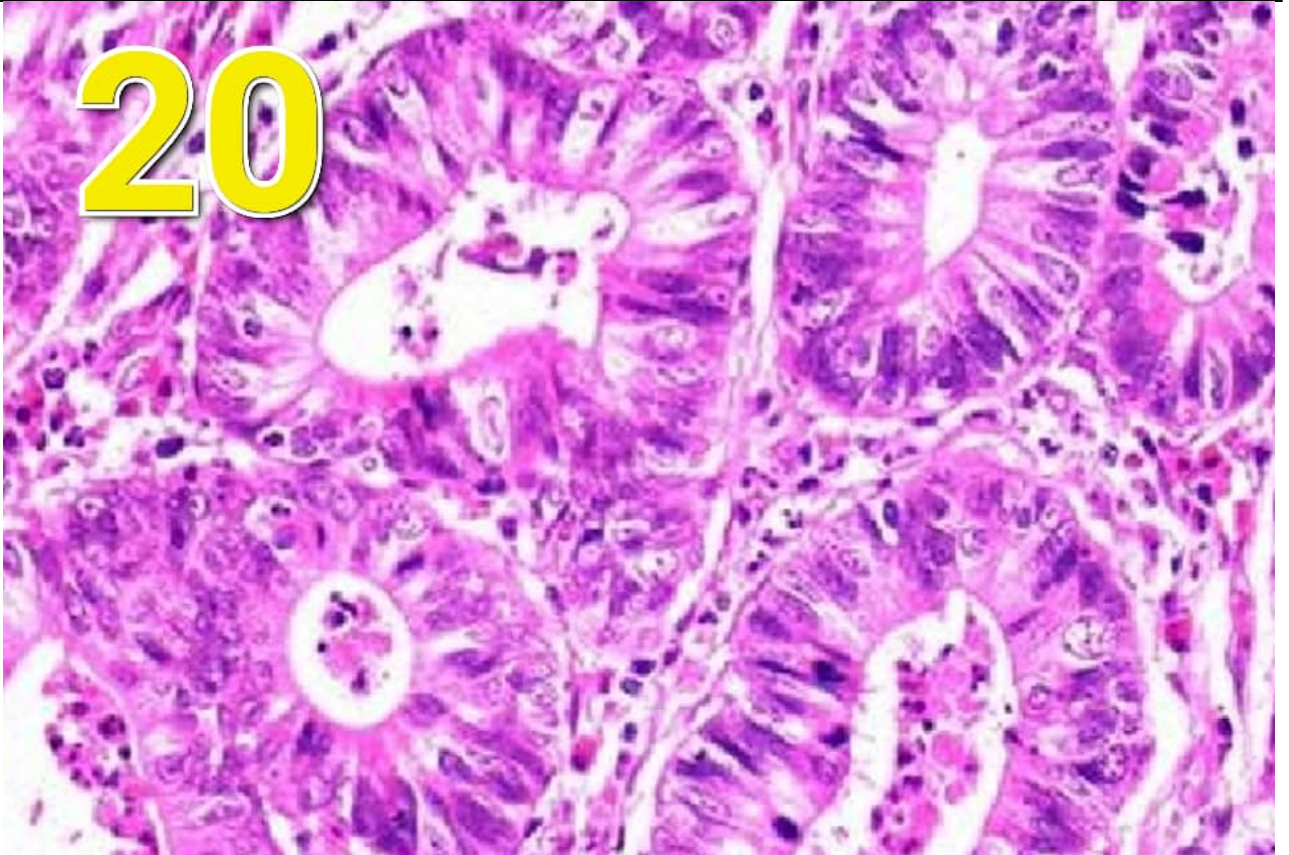


- 1) - Adenocarcinoma
- 2) - Adenomatous polyp
- 3) Squamous cell papilloma.

19) Identify the following slide:



- 1) - Adenocarcinoma
 - 2) - Muscular hypertrophy
 - 3) Benign prostatic hyperplasia
 - 4) - Squamous cell papilloma
- 20) .Identify the following slide:



- 1) + Adenocarcinoma
- 2) - Adenomatous polyp
- 3) - Squamous cell papilloma