

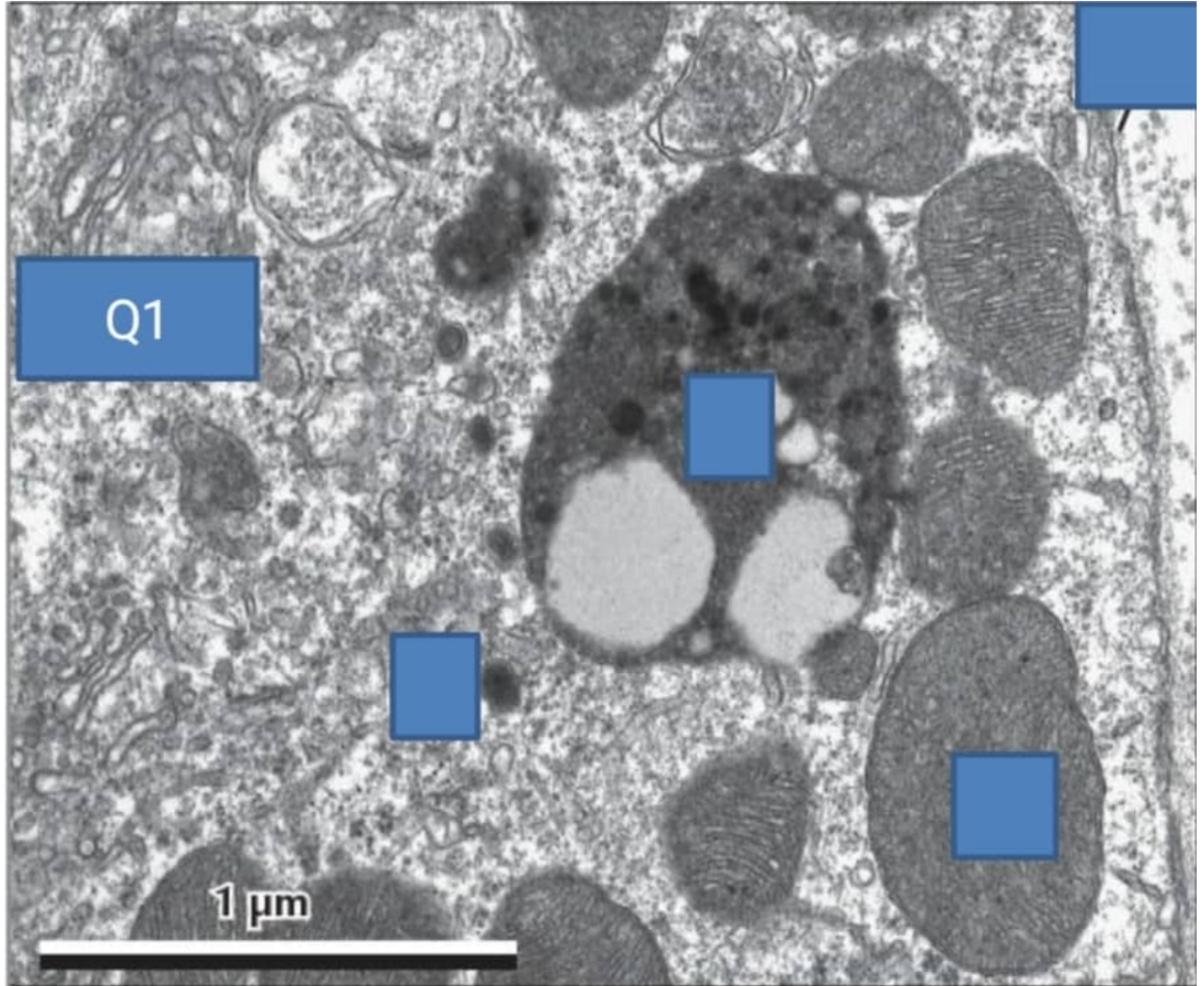


قائمة الاسئلة

علم الأنسجة العام المستوى الاول - طب وجراحة الفم والاسنان

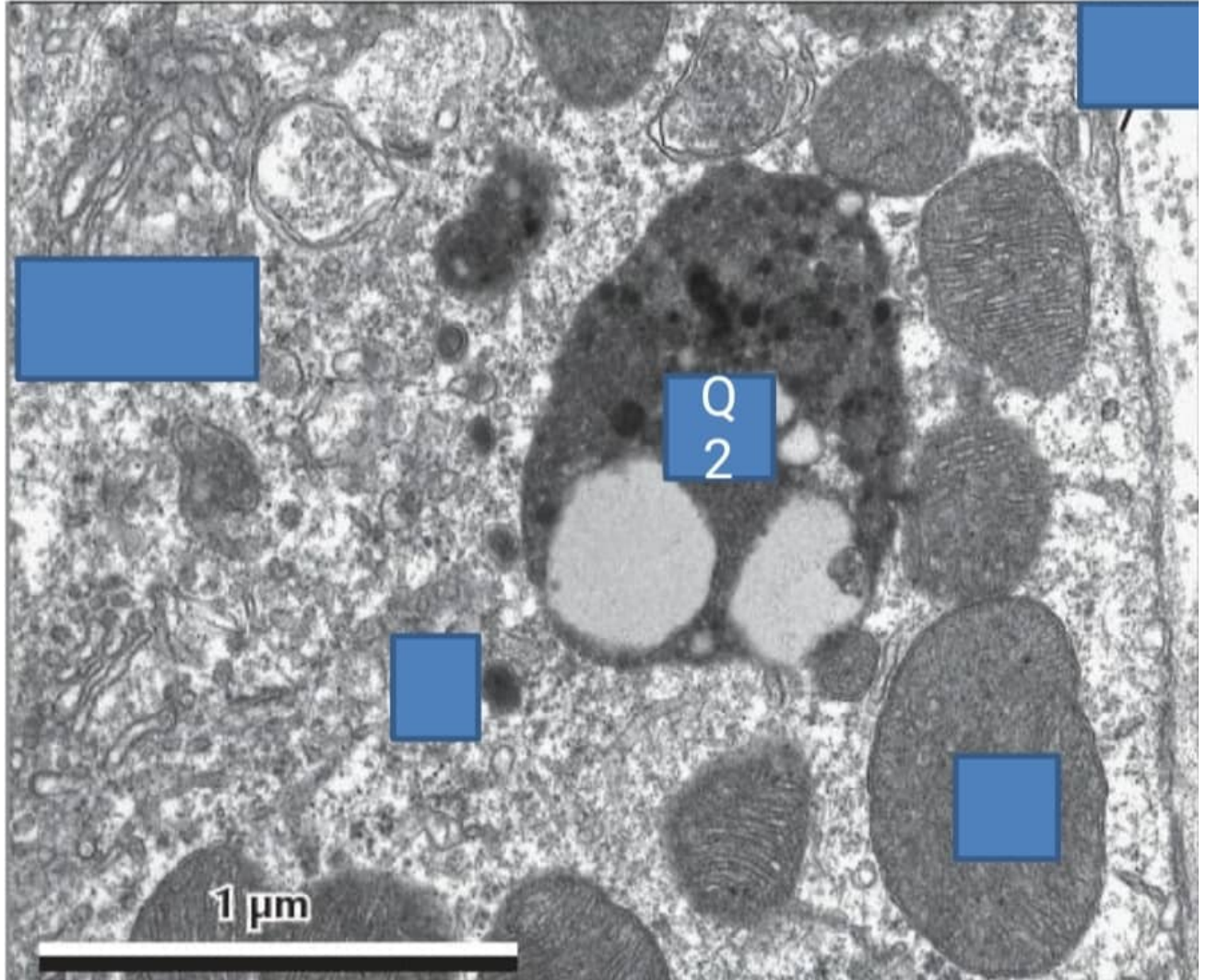
د.محمد سعيد محمد

1) IDENTIFY THE STRUCTURE

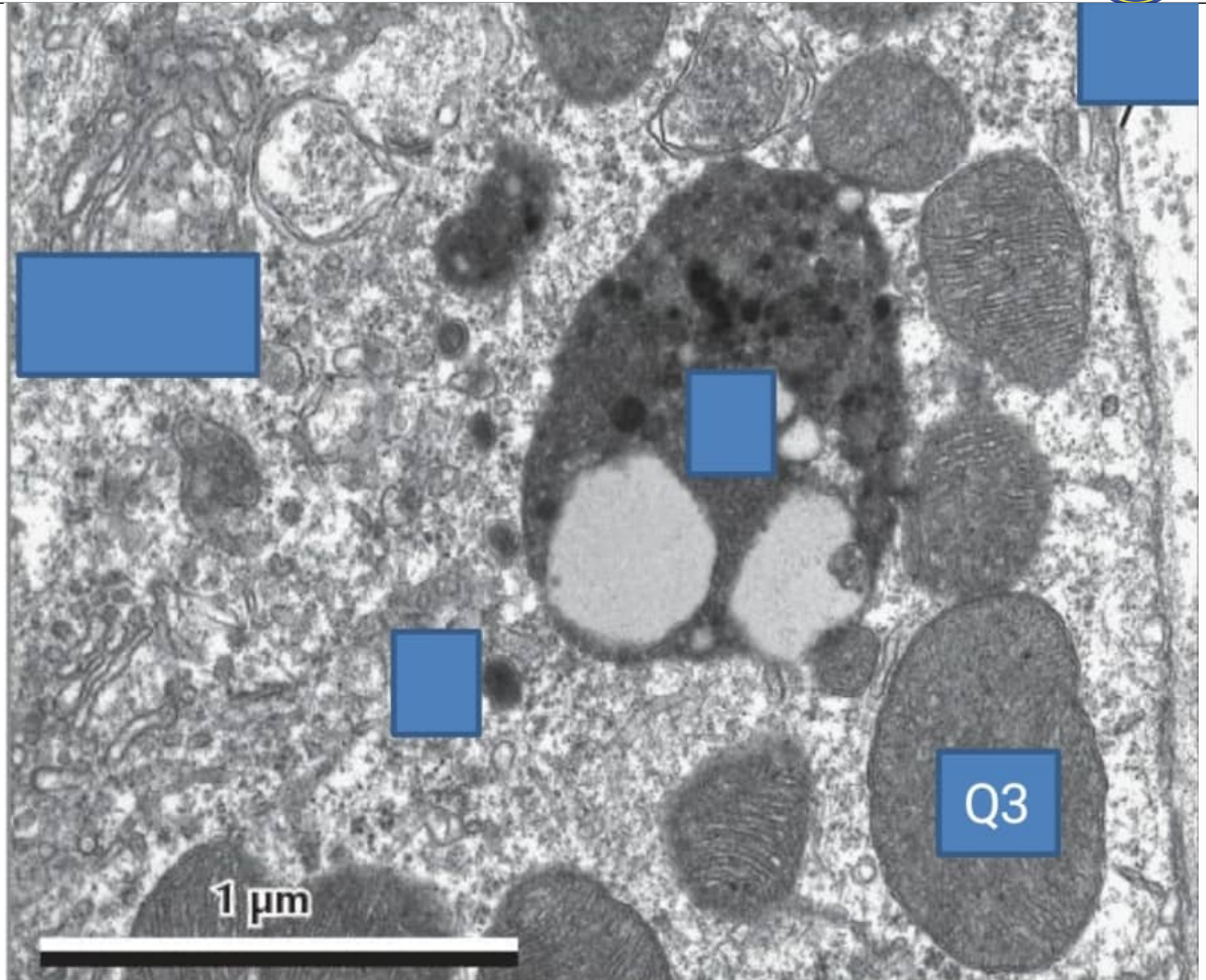


- 1) - A-mitochondria
- 2) - B-plasma membrane
- 3) - C-residual body
- 4) + D-golgi complex
- 5) - E-lysosome

2) IDENTIFY THE STRUCTURE



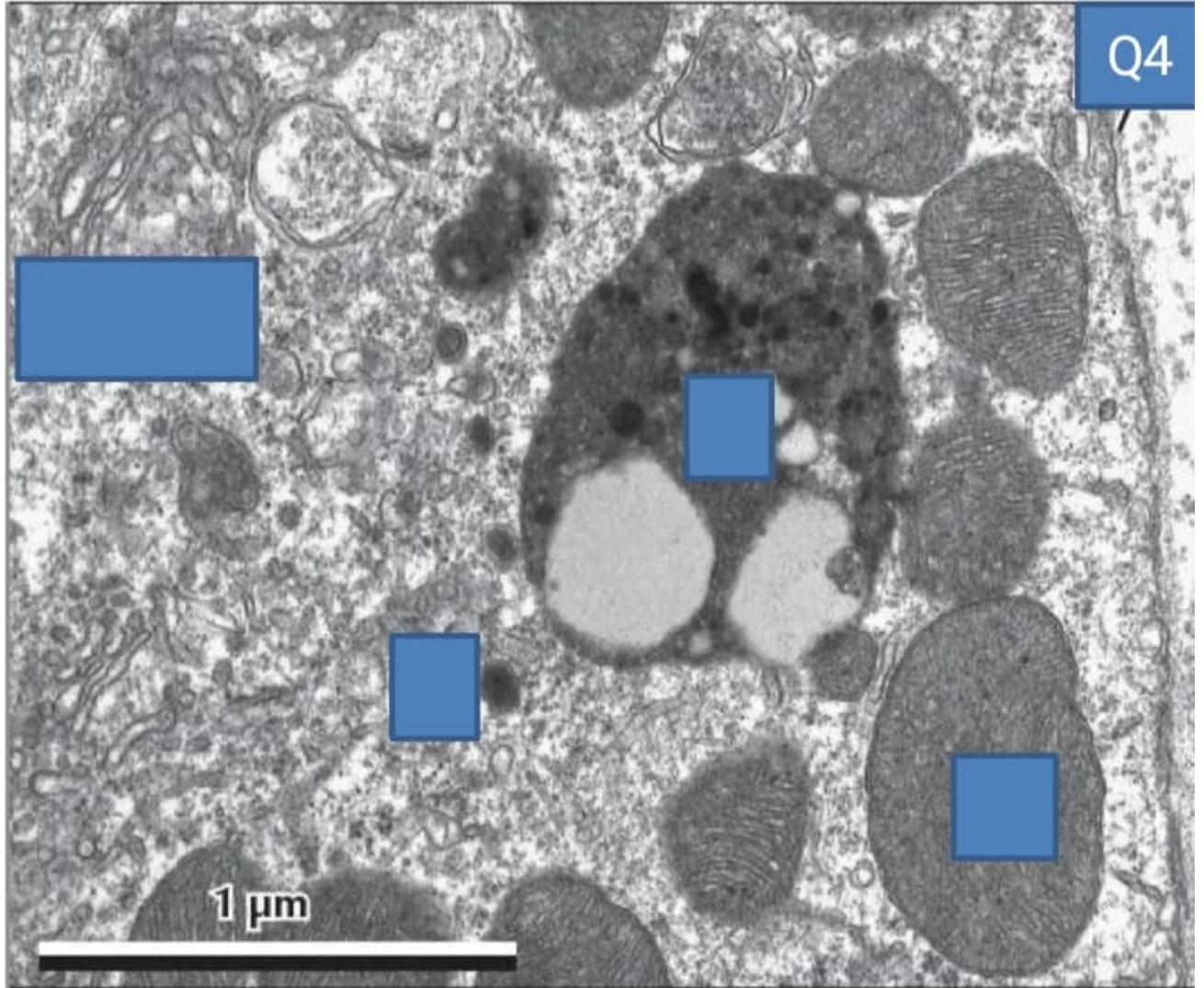
- 1) - A-mitochondria
 - 2) - B-plasma membrane
 - 3) + C-residual body
 - 4) - D-golgi complex
 - 5) - E-lysosome
- 3) IDENTIFY THE STRUCTURE



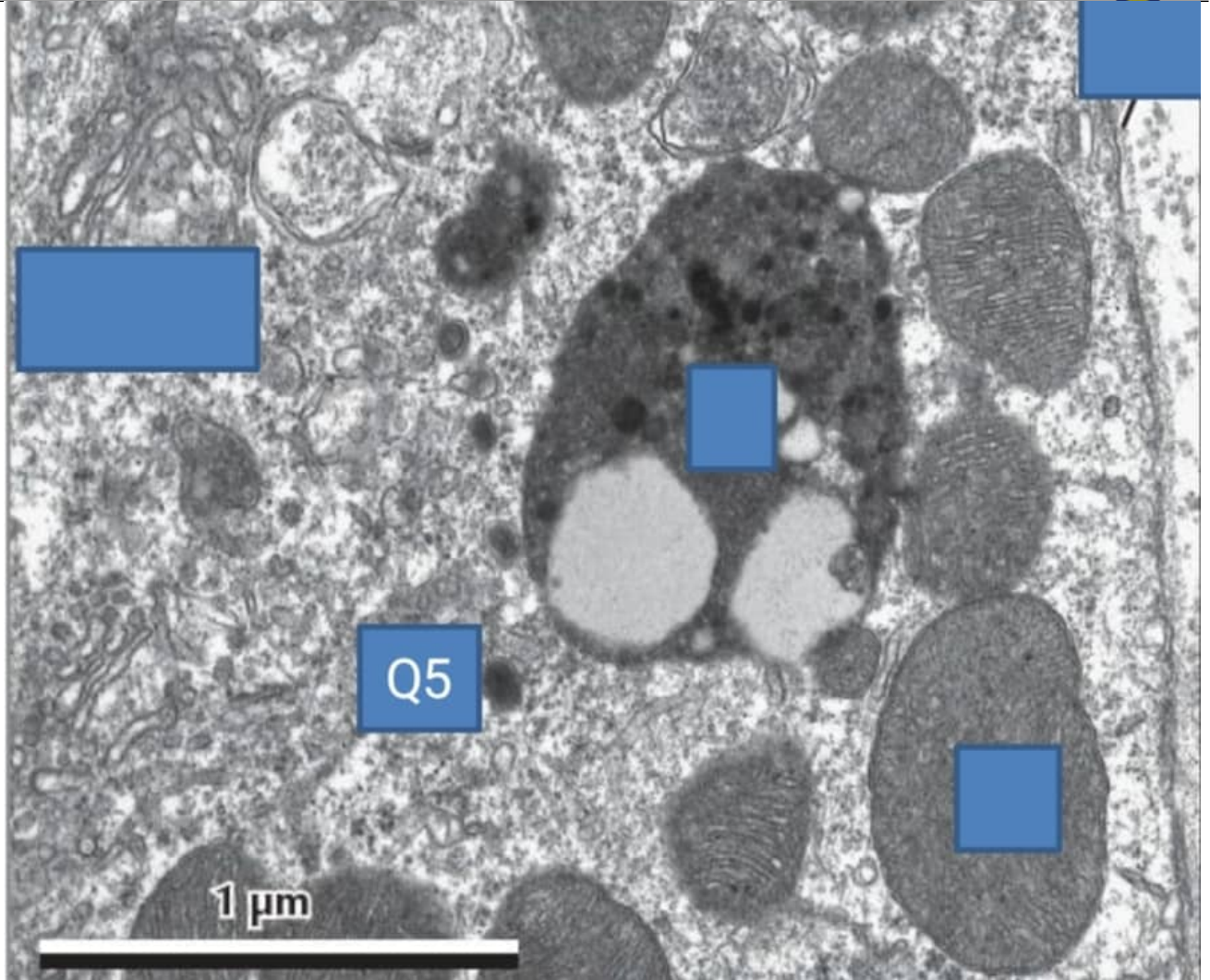
- 1) + A-mitochondria
 - 2) - B-plasma membrane
 - 3) - C-residual body
 - 4) - D-golgi complex
 - 5) - E-lysosome
- 4) IDENTIFY THE STRUCTURE



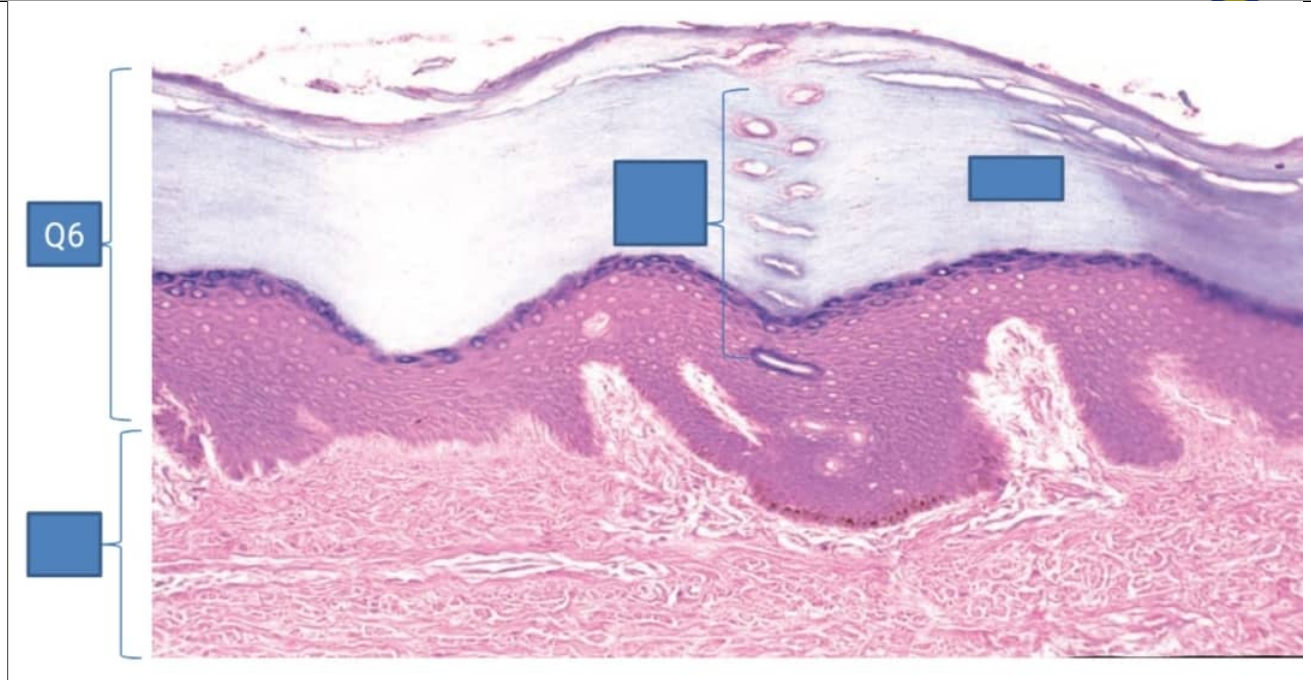
Q4



- 1) - A-mitochondria
 - 2) + B-plasma membrane
 - 3) - C-residual body
 - 4) - D-golgi complex
 - 5) - E-lysosome
- 5) IDENTIFY THE STRUCTURE

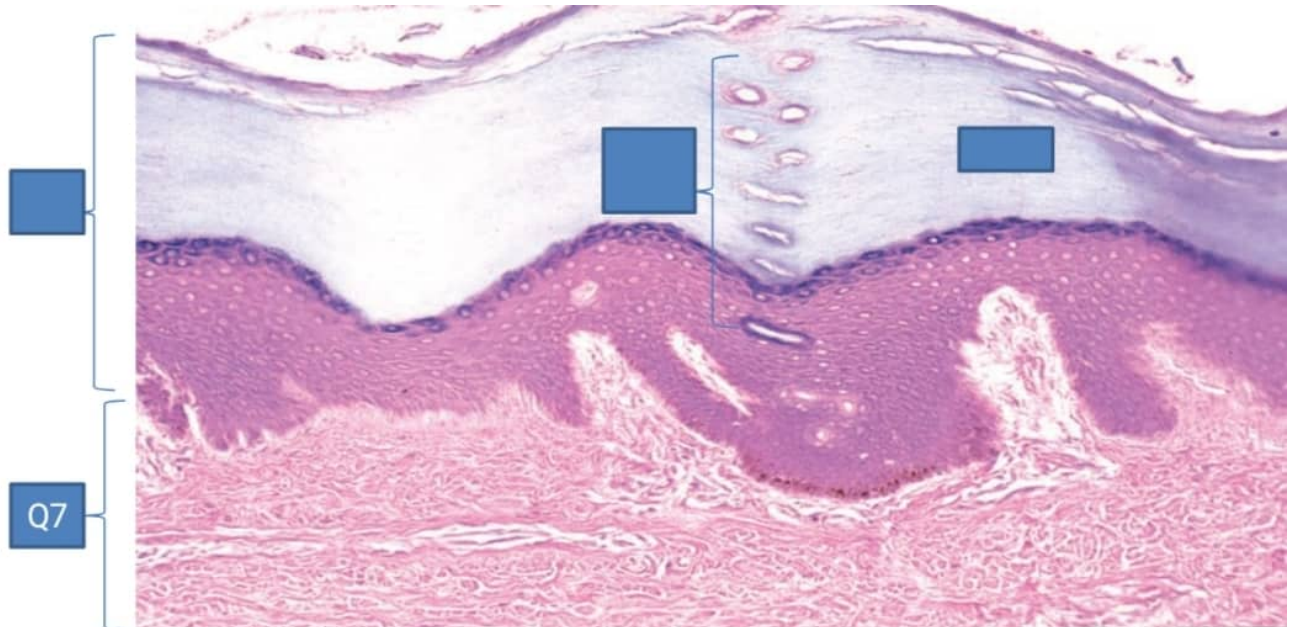


- 1) - A-mitochondria
- 2) - B-plasma membrane
- 3) - C-residual body
- 4) - D-golgi complex
- 5) E-lysosome
- 6) IDENTIFY THE STRUCTURE



- 1) - A-connective tissue
- 2) + B-stratified squamous epithelium
- 3) - C-thick skin
- 4) - D-ducts of sweat glands
- 5) - E-keratin layer

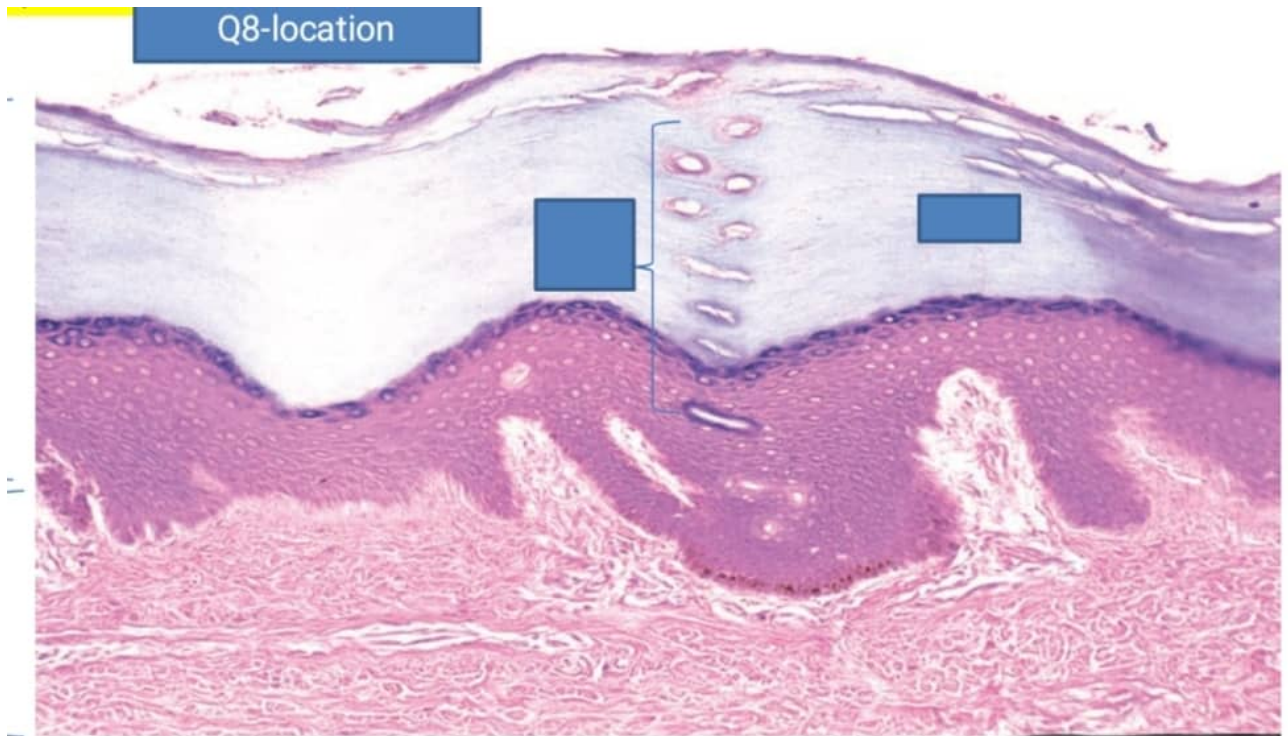
7) IDENTIFY THE STRUCTURE



- 1) + A-connective tissue
- 2) - B-stratified squamous epithelium
- 3) - C-thick skin
- 4) - D-ducts of sweat glands
- 5) - E-keratin layer

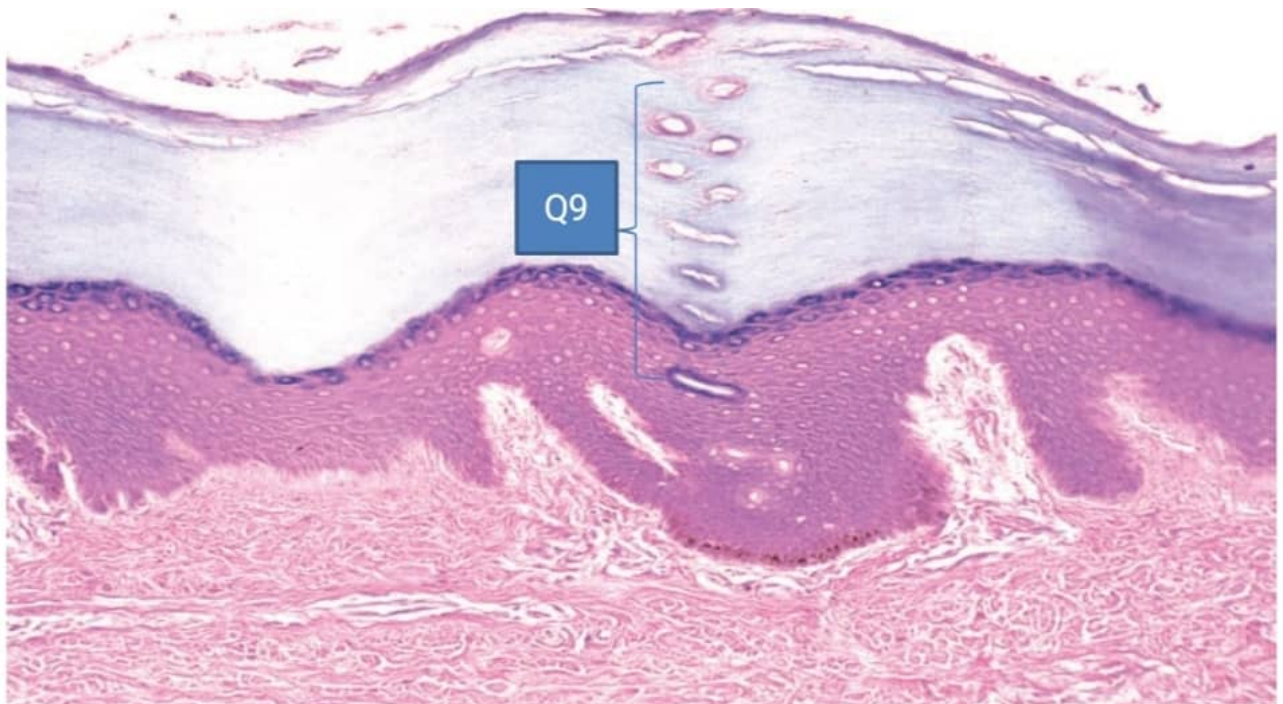


8) IDENTIFY THE STRUCTURE



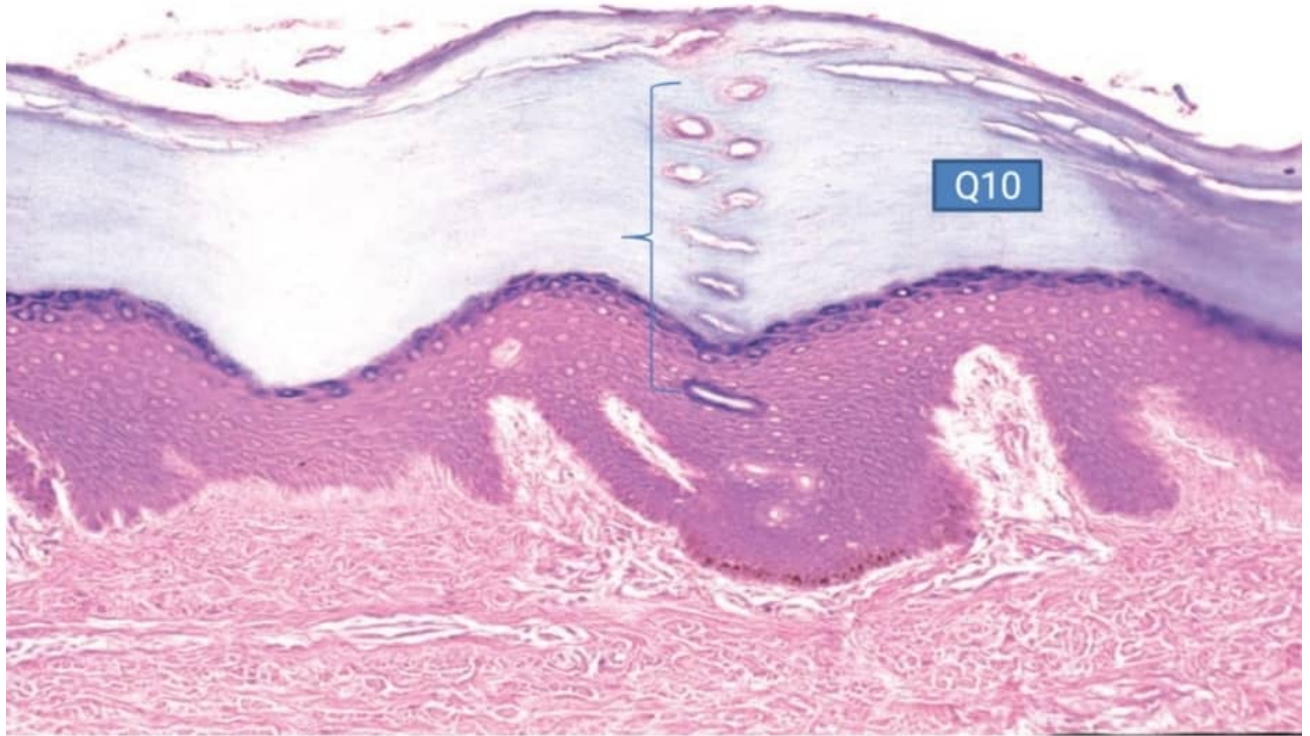
- 1) - A-connective tissue
- 2) - B-stratified squamous epithelium
- 3) + C-thick skin
- 4) - D-ducts of sweat glands
- 5) - E-keratin layer

9) IDENTIFY THE STRUCTURE

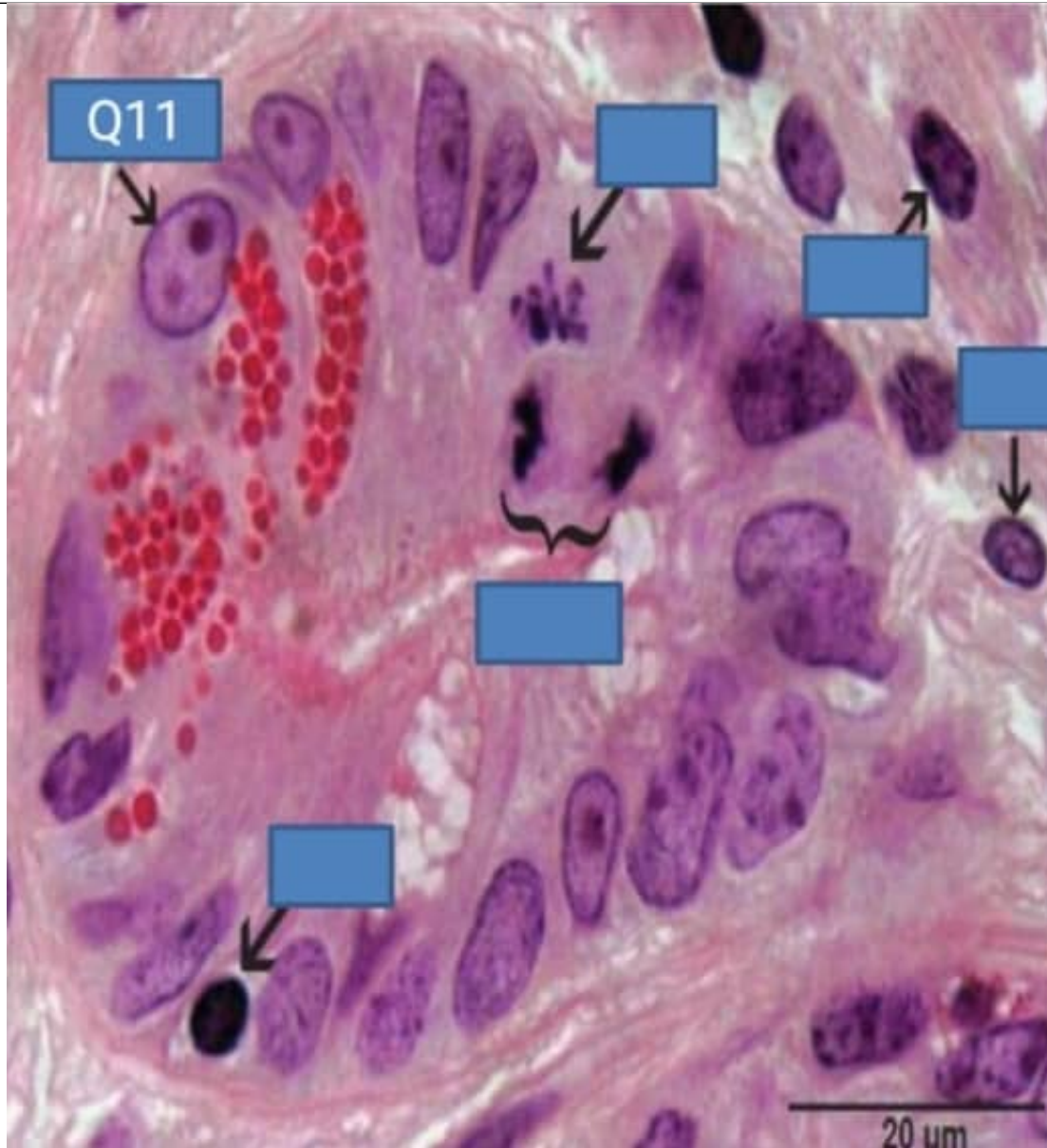




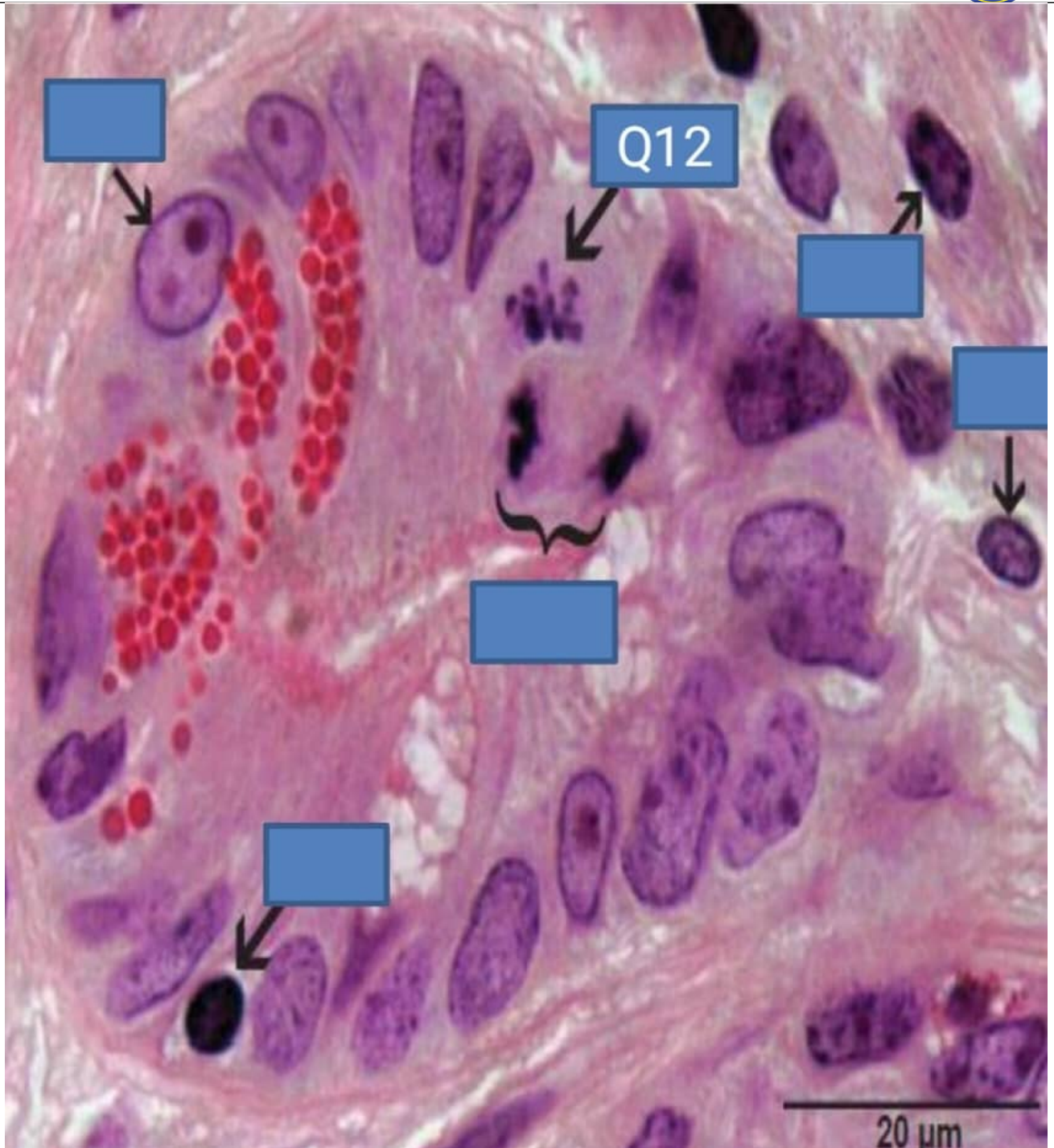
- 1) - A-connective tissue
 - 2) - B-stratified squamous epithelium
 - 3) - C-thick skin
 - 4) + D-ducts of sweat glands
 - 5) - E-keratin layer
- 10) IDENTIFY THE STRUCTURE



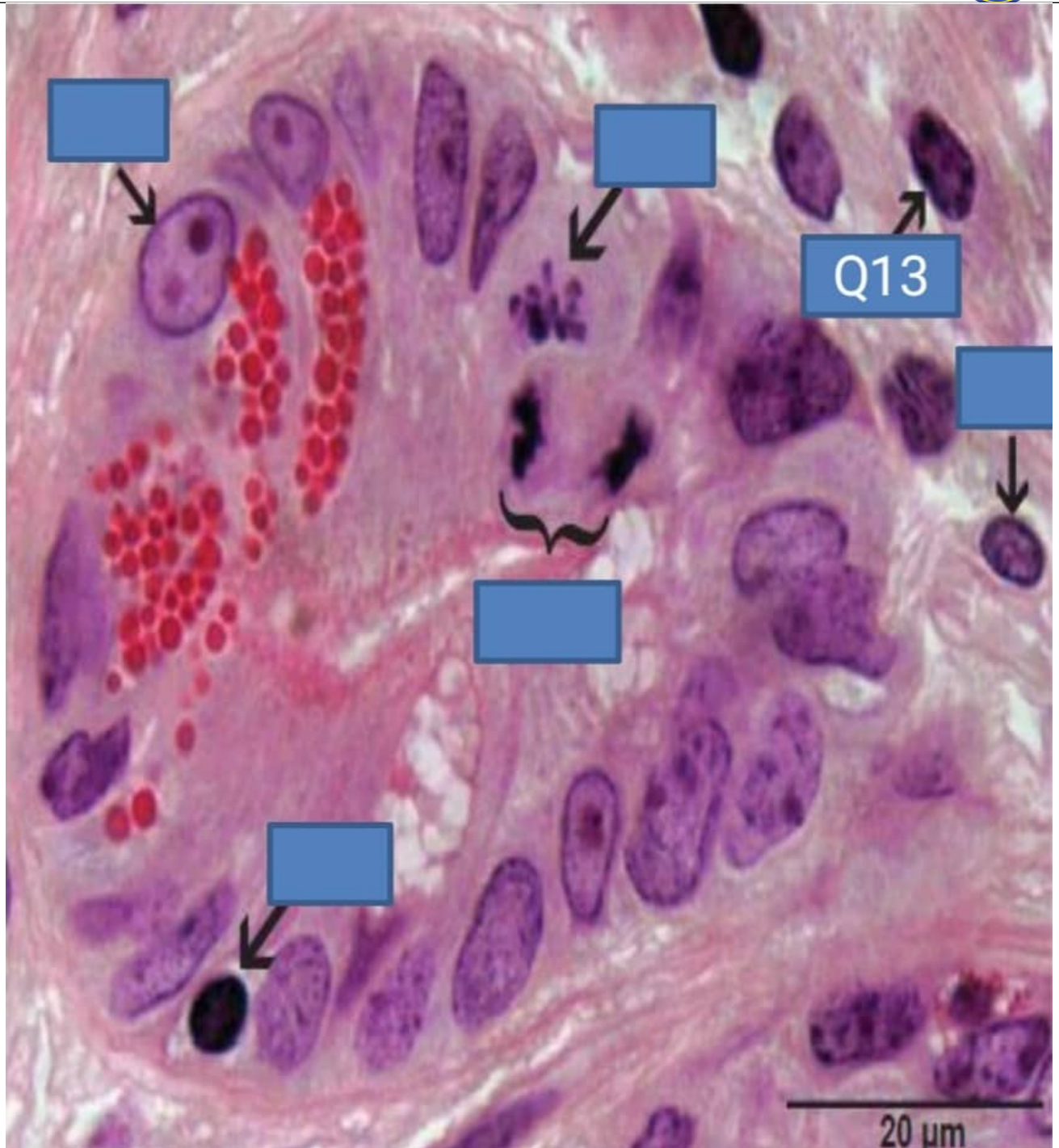
- 1) - A-connective tissue
 - 2) - B-stratified squamous epithelium
 - 3) - C-thick skin
 - 4) - D-ducts of sweat glands
 - 5) + E-keratin layer
- 11) IDENTIFY THE STRUCTURE



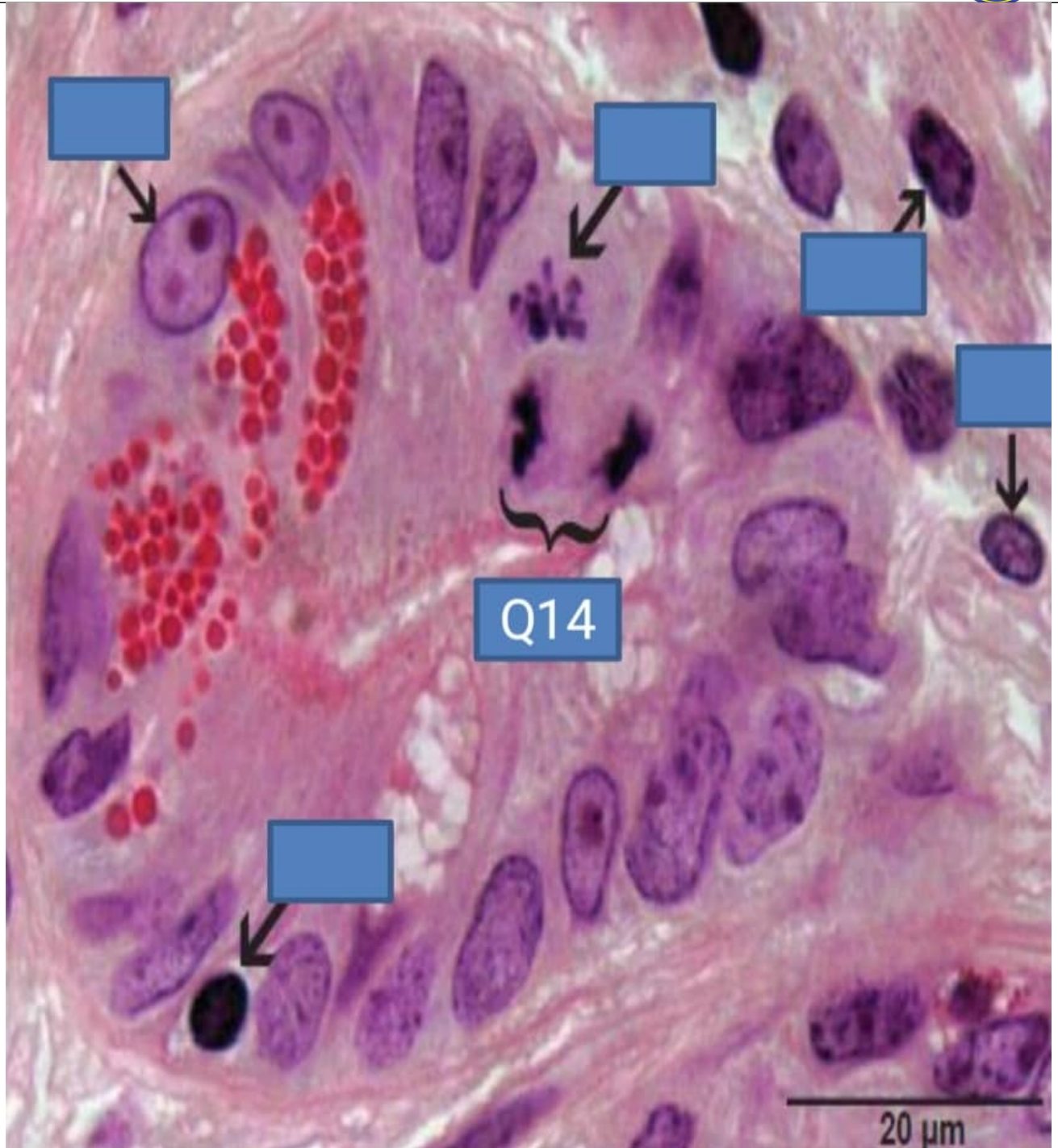
- 1) + A-active open face nucleus
 - 2) - B-anaphase stage
 - 3) - C-mixed hetero and euchromatic nucleus
 - 4) - D-dense heterochromatic nucleus
 - 5) - E-metaphase stage
- 12) IDENTIFY THE STRUCTURE



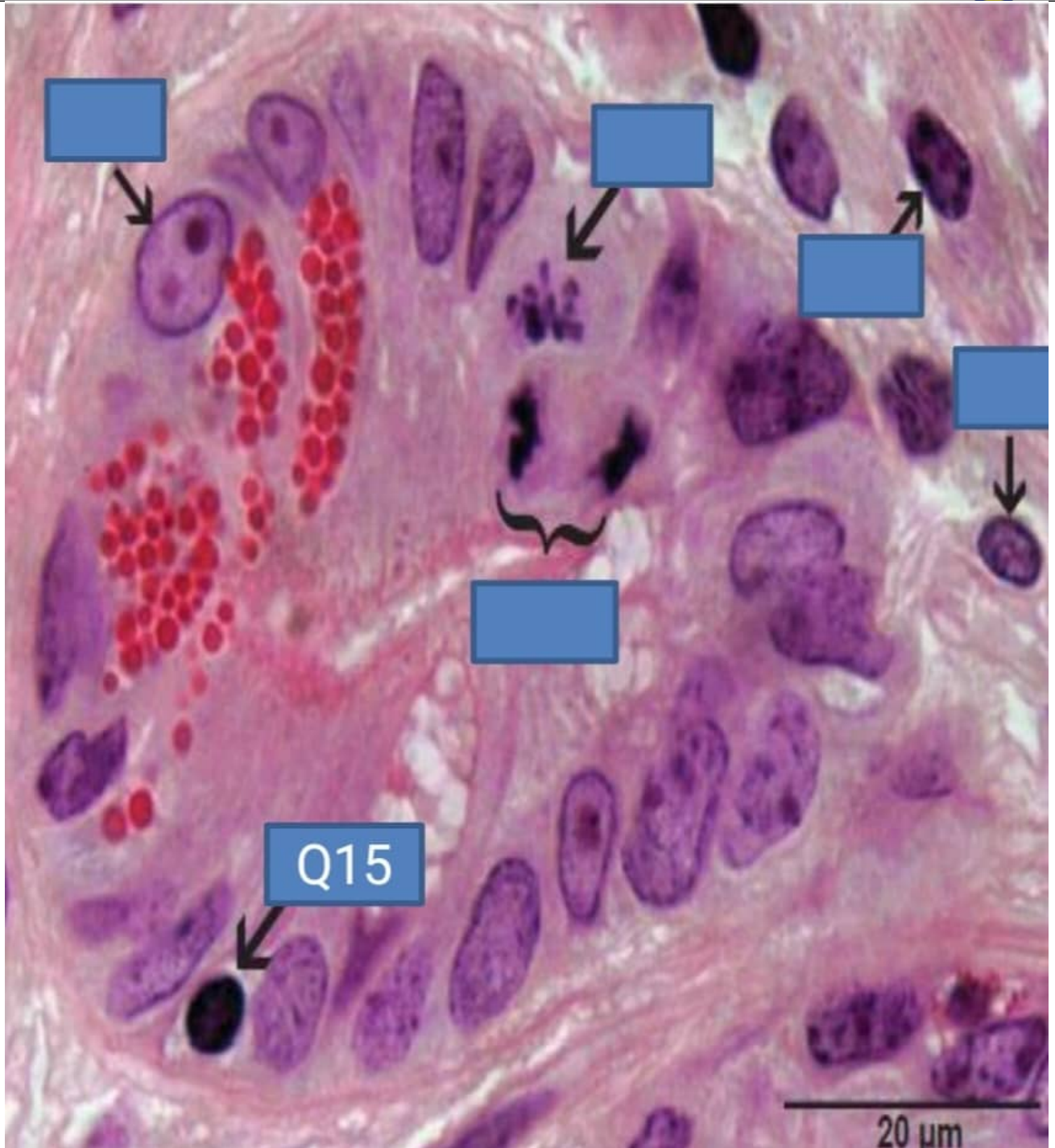
- 1) - A-active open face nucleus
 - 2) - B-anaphase stage
 - 3) - C-mixed hetero and euchromatic nucleus
 - 4) - D-dense heterochromatic nucleus
 - 5) + E-metaphase stage
- 13) IDENTIFY THE STRUCTURE



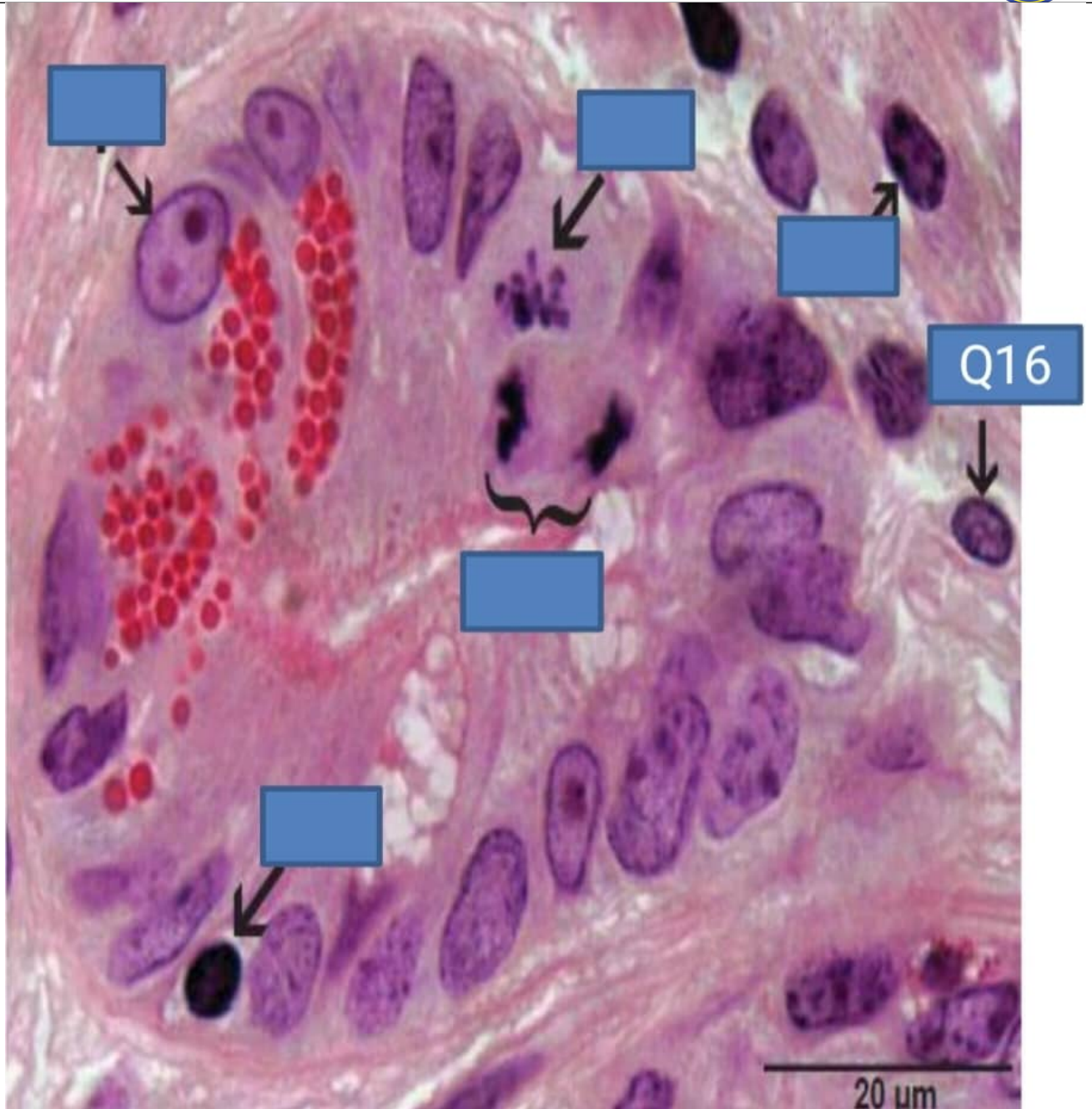
- 1) - A-active open face nucleus
 - 2) - B-anaphase stage
 - 3) + C-mixed hetero and euchromatic nucleus
 - 4) - D-dense heterochromatic nucleus
 - 5) - E-metaphase stage
- 14) IDENTIFY THE STRUCTURE



- 1) - A-active open face nucleus
 - 2) + B-anaphase stage
 - 3) - C-mixed hetero and euchromatic nucleus
 - 4) - D-dense heterochromatic nucleus
 - 5) - E-metaphase stage
- 15) IDENTIFY THE STRUCTURE



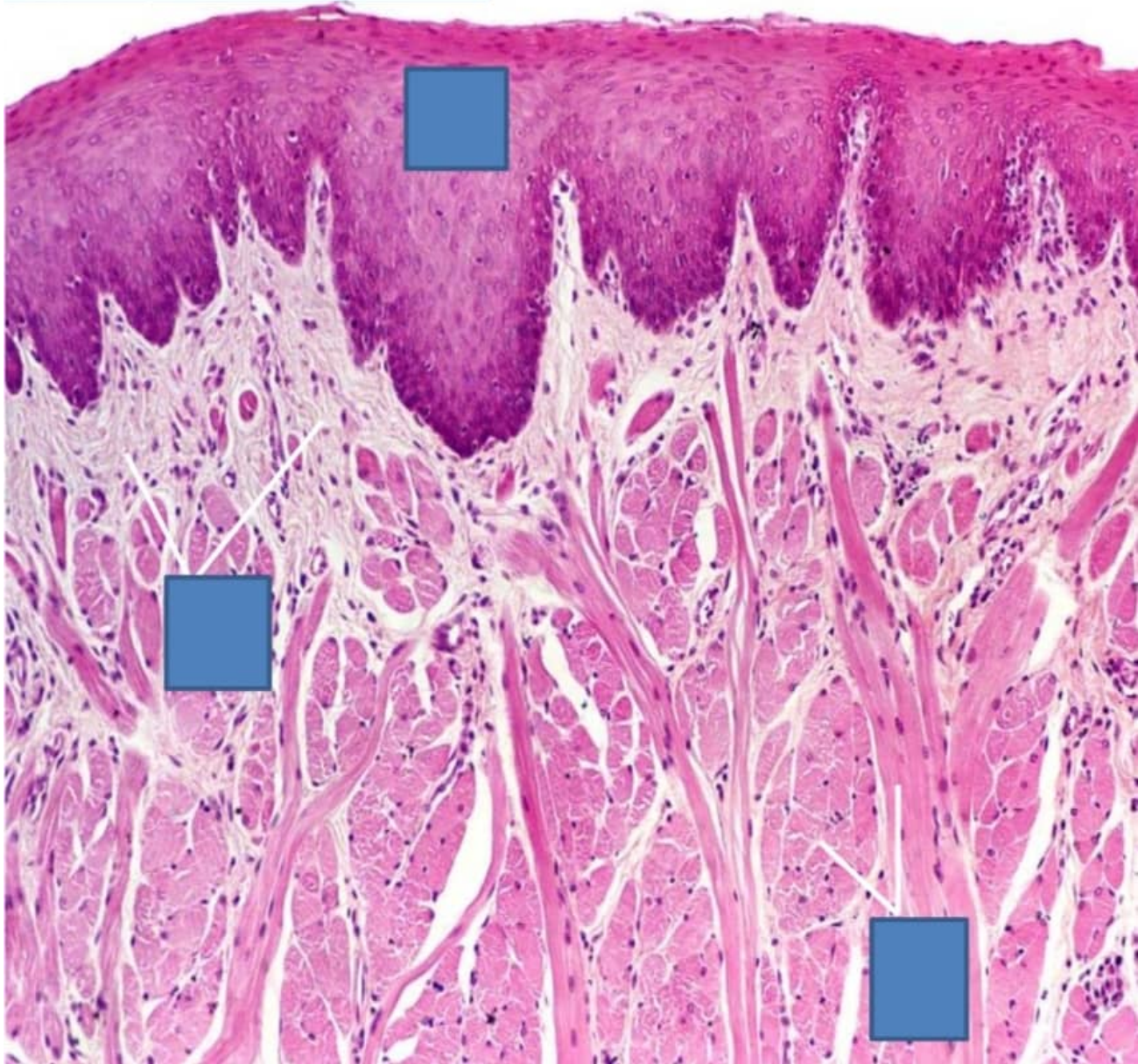
- 1) - A-active open face nucleus
 - 2) - B-anaphase stage
 - 3) - C-mixed hetero and euchromatic nucleus
 - 4) + D-dense heterochromatic nucleus
 - 5) - E-metaphase stage
- 16) IDENTIFY THE STRUCTURE



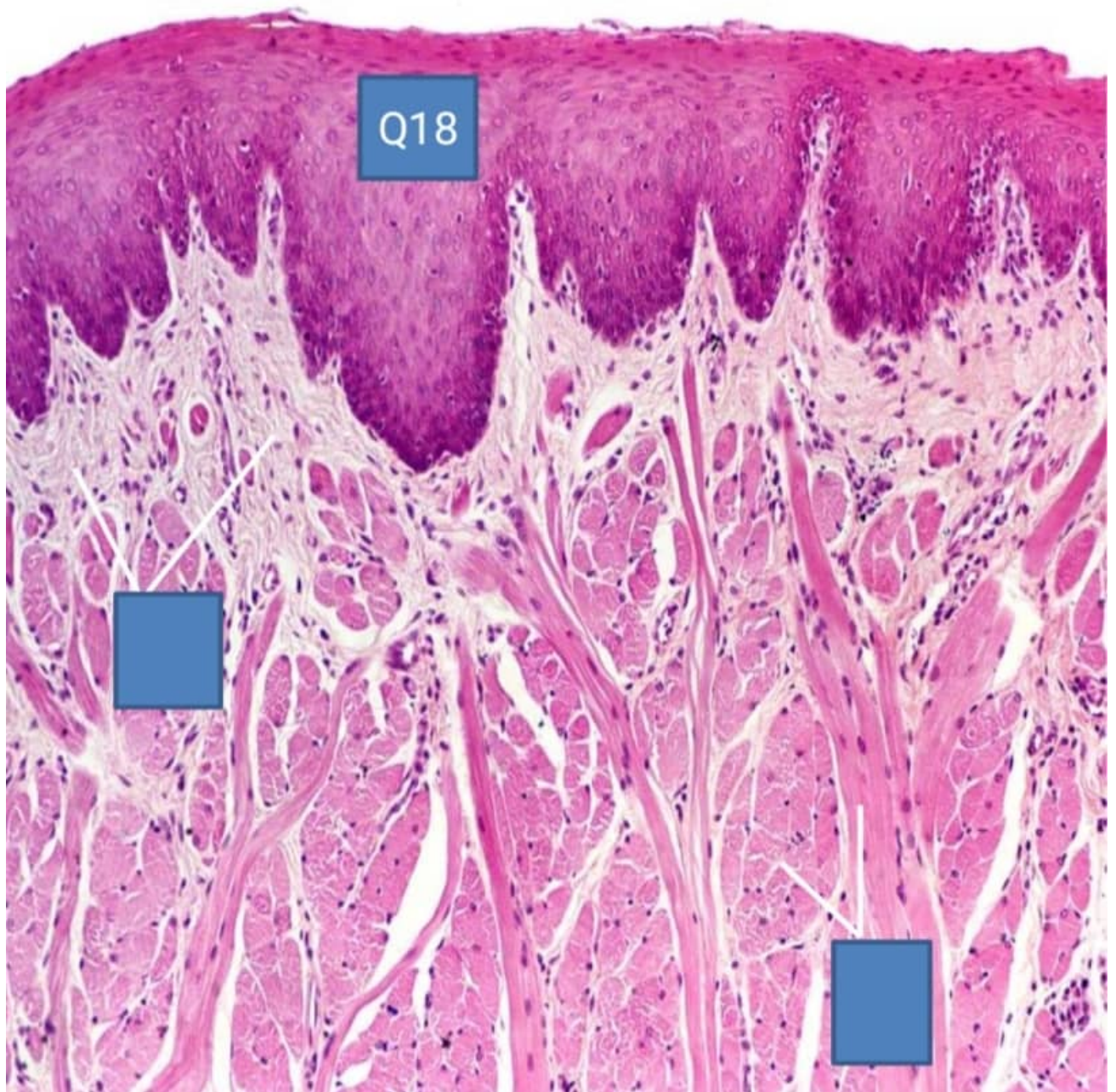
- 1) - A-active open face nucleus
 - 2) - B-anaphase stage
 - 3) C-mixed hetero and euchromatic nucleus
 - 4) - D-dense heterochromatic nucleus
 - 5) - E-metaphase stage
- 17) IDENTIFY THE STRUCTURE



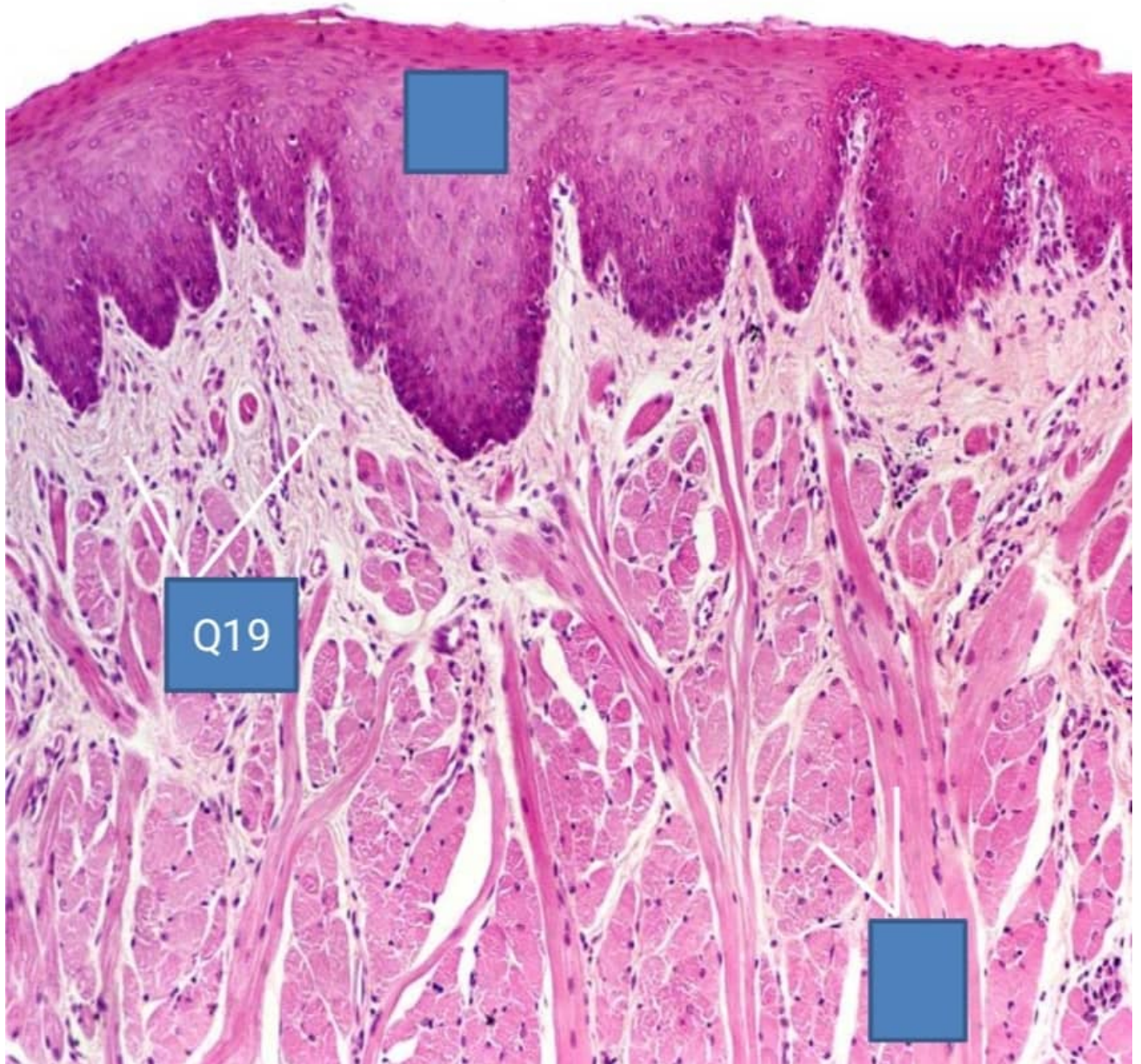
Q17-location



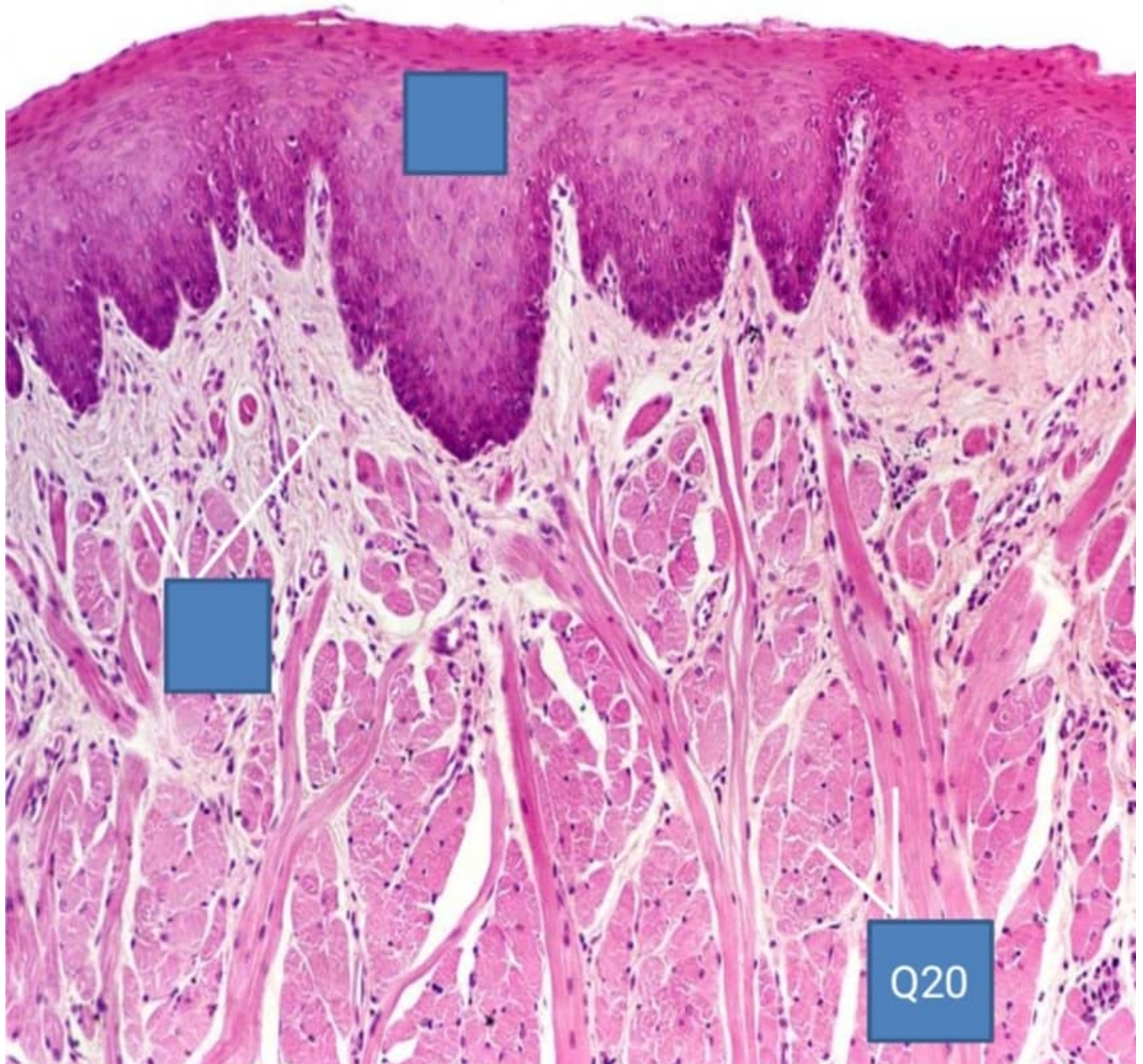
- 1) - A-skeletal muscle fibers
 - 2) - B-connective tissue
 - 3) + C-ventral surface of the tongue
 - 4) - D-stratified squamous epithelium
 - 5) - E-smooth muscle
- 18) IDENTIFY THE STRUCTURE



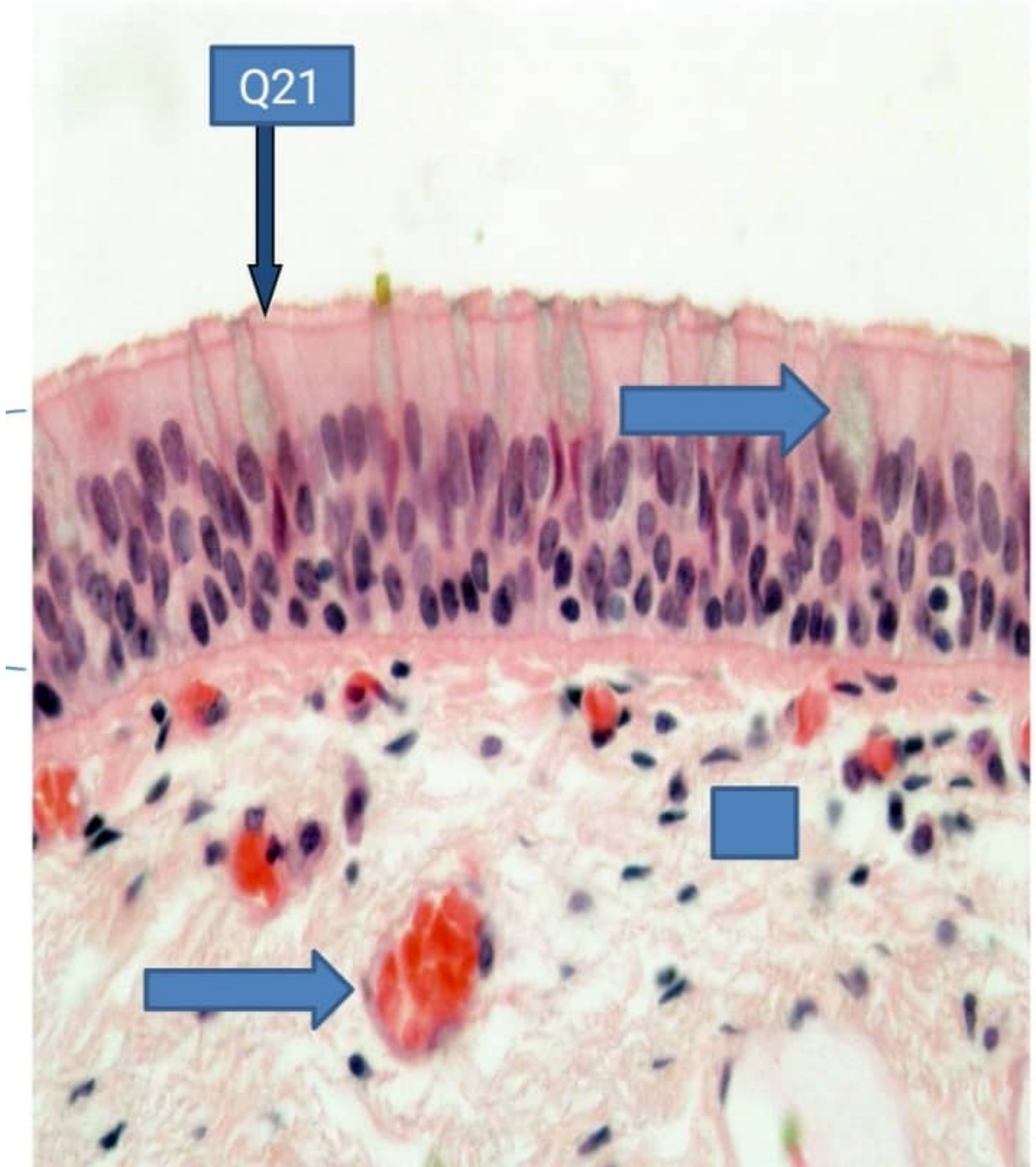
- 1) - A-skeletal muscle fibers
 - 2) - B-connective tissue
 - 3) - C-dorsal surface of the tongue
 - 4) D-stratified squamous epithelium
 - 5) - E-smooth muscle
- 19) IDENTIFY THE STRUCTURE



- 1) - A-skeletal muscle fibers
 - 2) B-connective tissue
 - 3) - C-dorsal surface of the tongue
 - 4) - D-stratified squamous epithelium
 - 5) - E-smooth muscle
- 20) IDENTIFY THE STRUCTURE

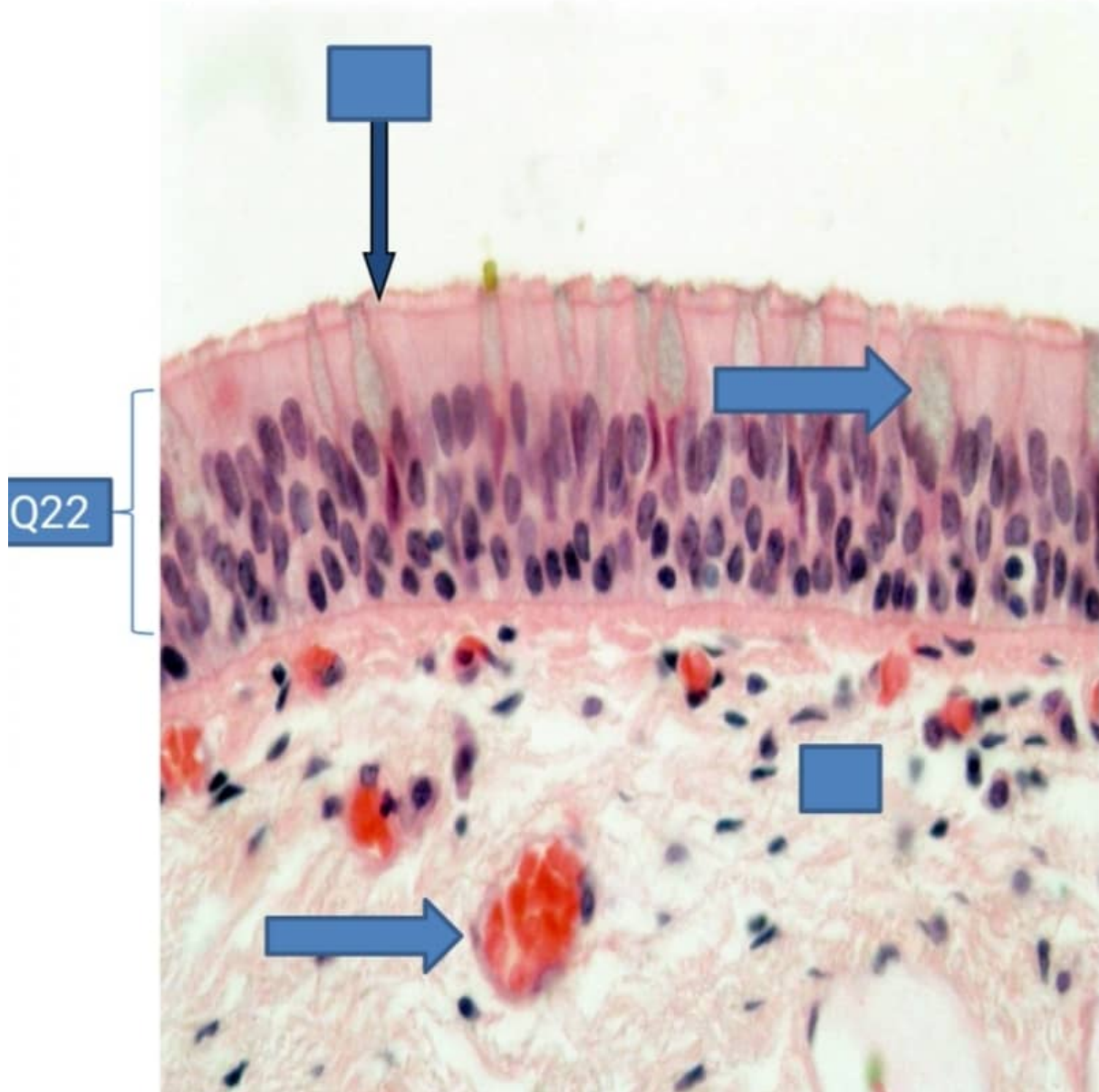


- 1) + A-skeletal muscle fibers
 - 2) - B-connective tissue
 - 3) - C-dorsal surface of the tongue
 - 4) - D-stratified squamous epithelium
 - 5) - E-smooth muscle
- 21) IDENTIFY THE STRUCTURE



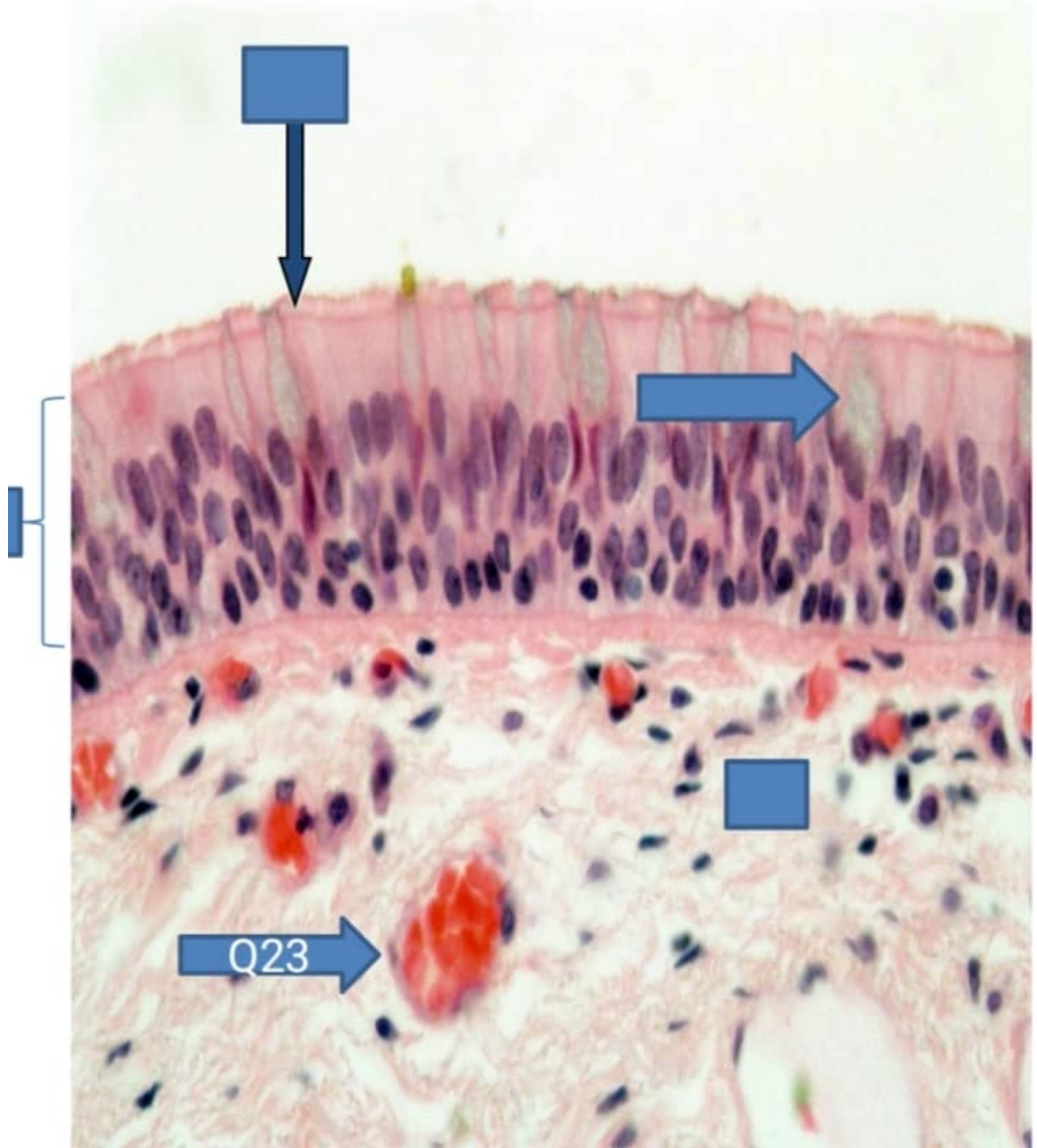
- 1) - A-connective tissue
- 2) - B-goblet cells
- 3) - C-pseudostratified epithelium
- 4) - D-blood vessels
- 5) + E-cilia

22) IDENTIFY THE STRUCTURE



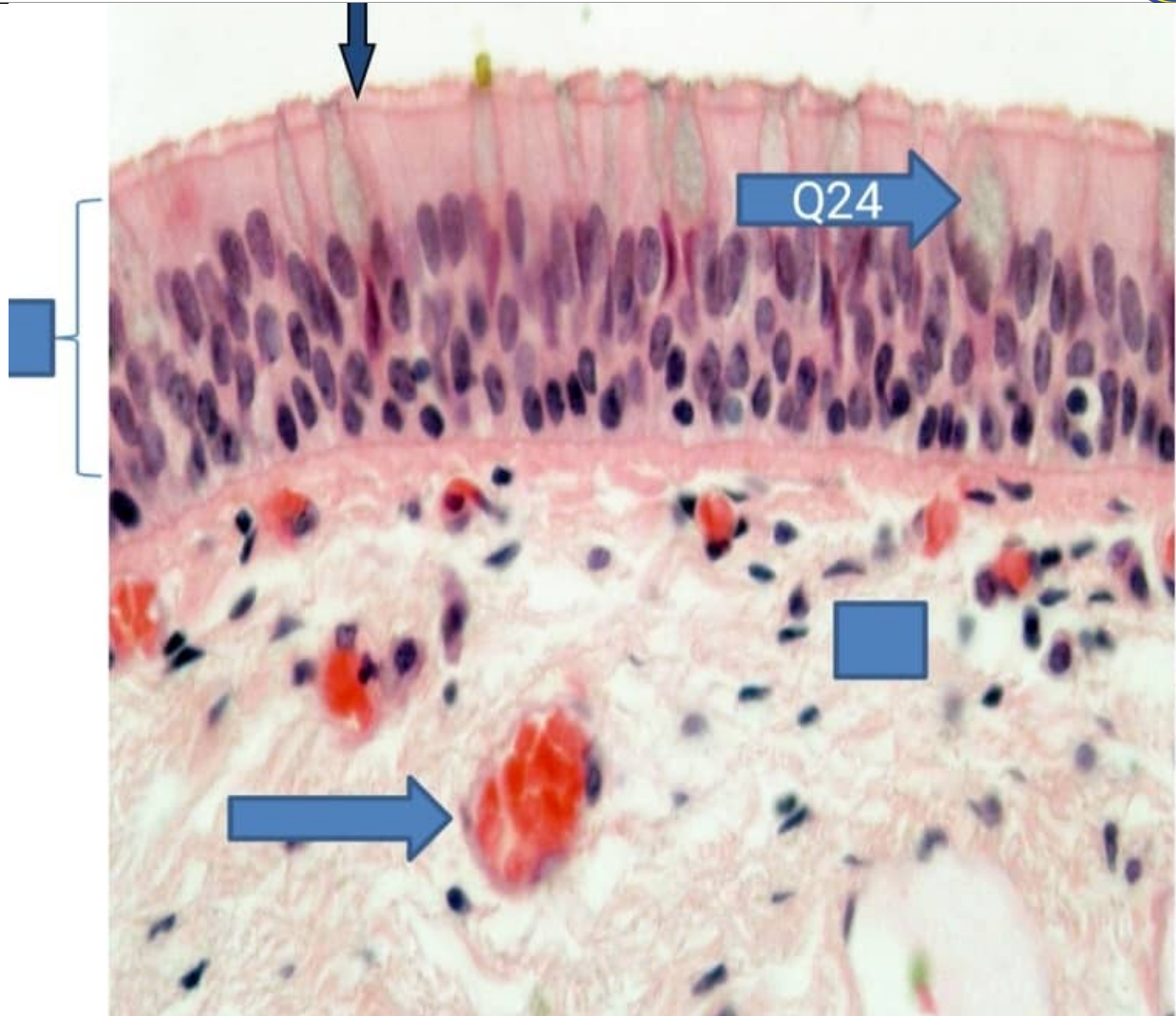
- 1) - A-connective tissue
- 2) - B-goblet cells
- 3) + C-pseudostratified epithelium
- 4) - D-blood vessels
- 5) - E-cillia

23) IDENTIFY THE STRUCTURE

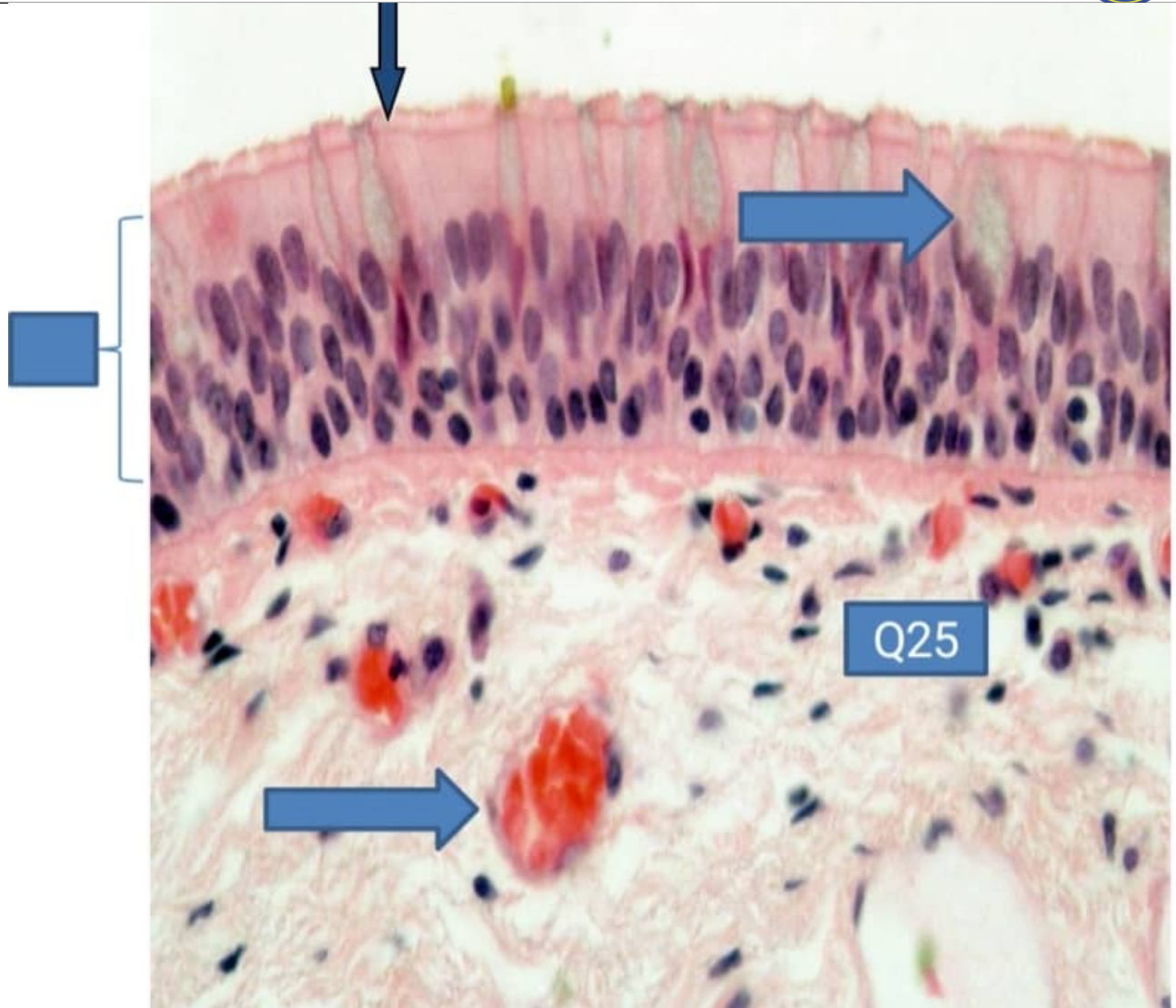


- 1) - A-connective tissue
- 2) - B-goblet cells
- 3) - C-pseudostratified epithelium
- 4) + D-blood vessels
- 5) - E-cilia

24) IDENTIFY THE STRUCTURE



- 1) - A-connective tissue
 - 2) + B-goblet cells
 - 3) - C-pseudostratified epithelium
 - 4) - D-blood vessels
 - 5) - E-cilia
- 25) IDENTIFY THE STRUCTURE



- 1) + A-connective tissue
- 2) - B-goblet cells
- 3) - C-pseudostratified epithelium
- 4) - D-blood vessels
- 5) - E-cilia