

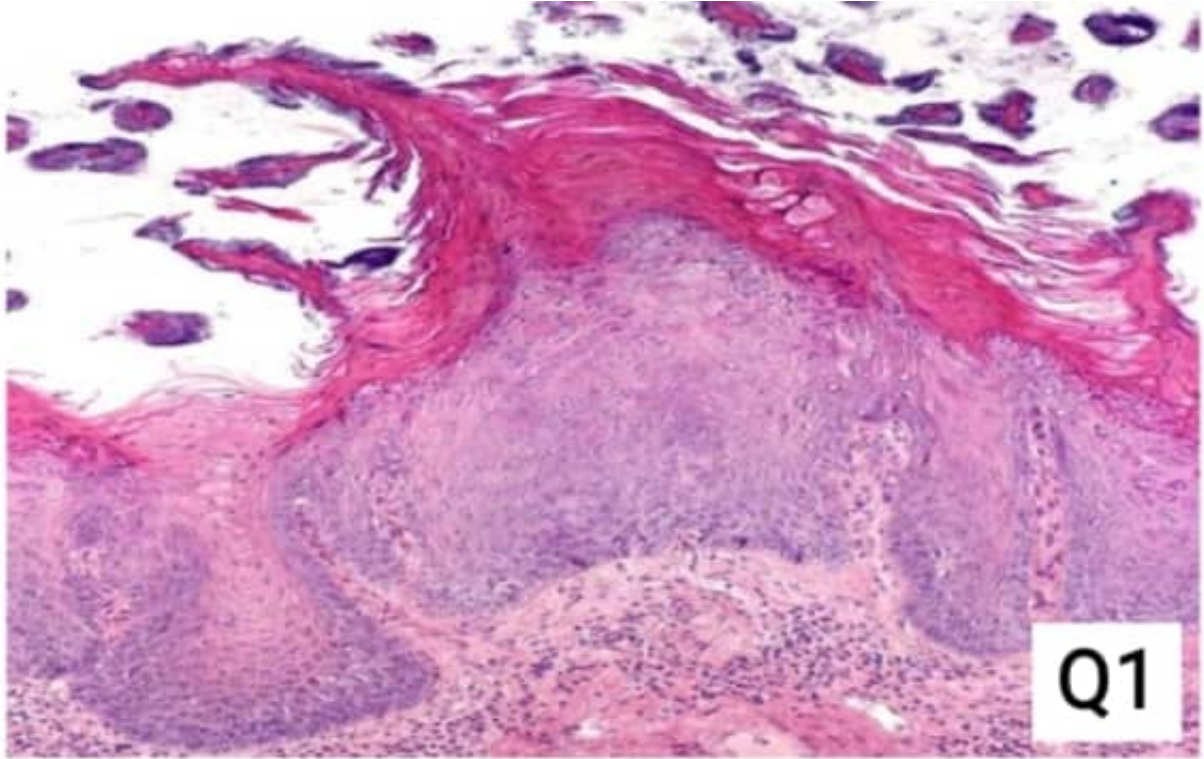


قائمة الاسئلة

نسيج الفم والاسنان العملي المستوى الثاني - طب وجراحة الفم والاسنان

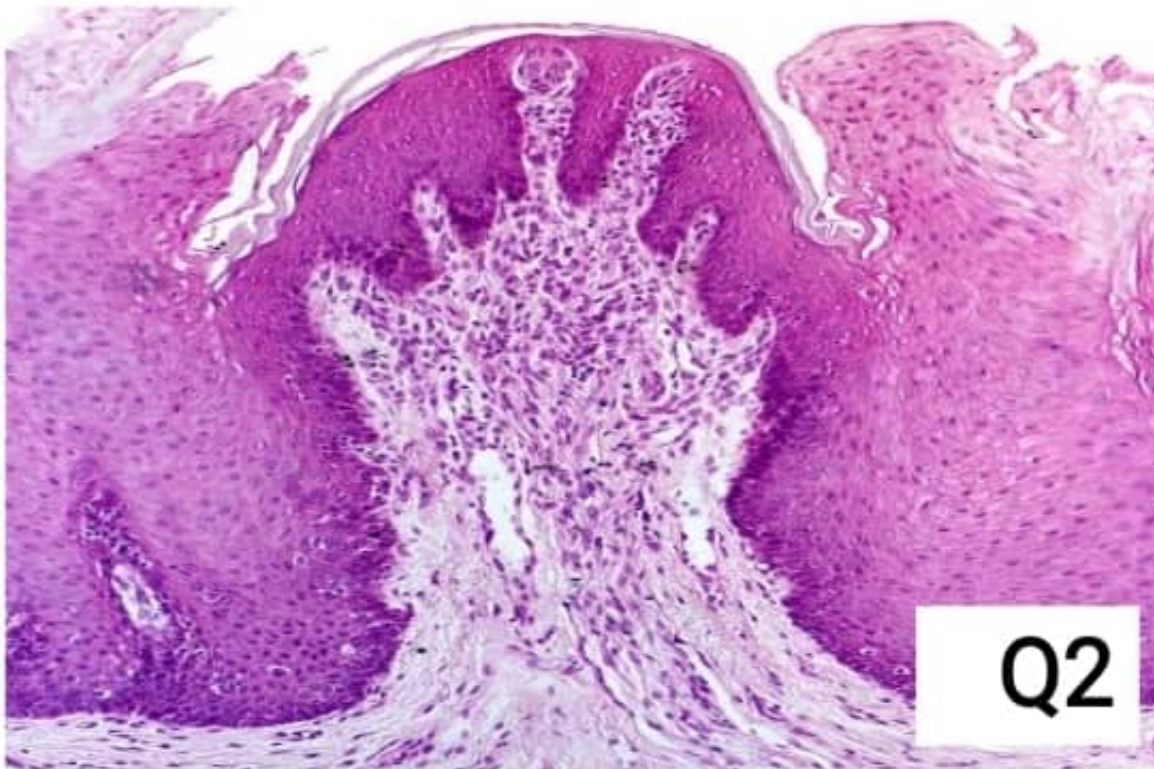
د.محمد سعيد محمد

1) IDENTIFY THE STRUCTURE

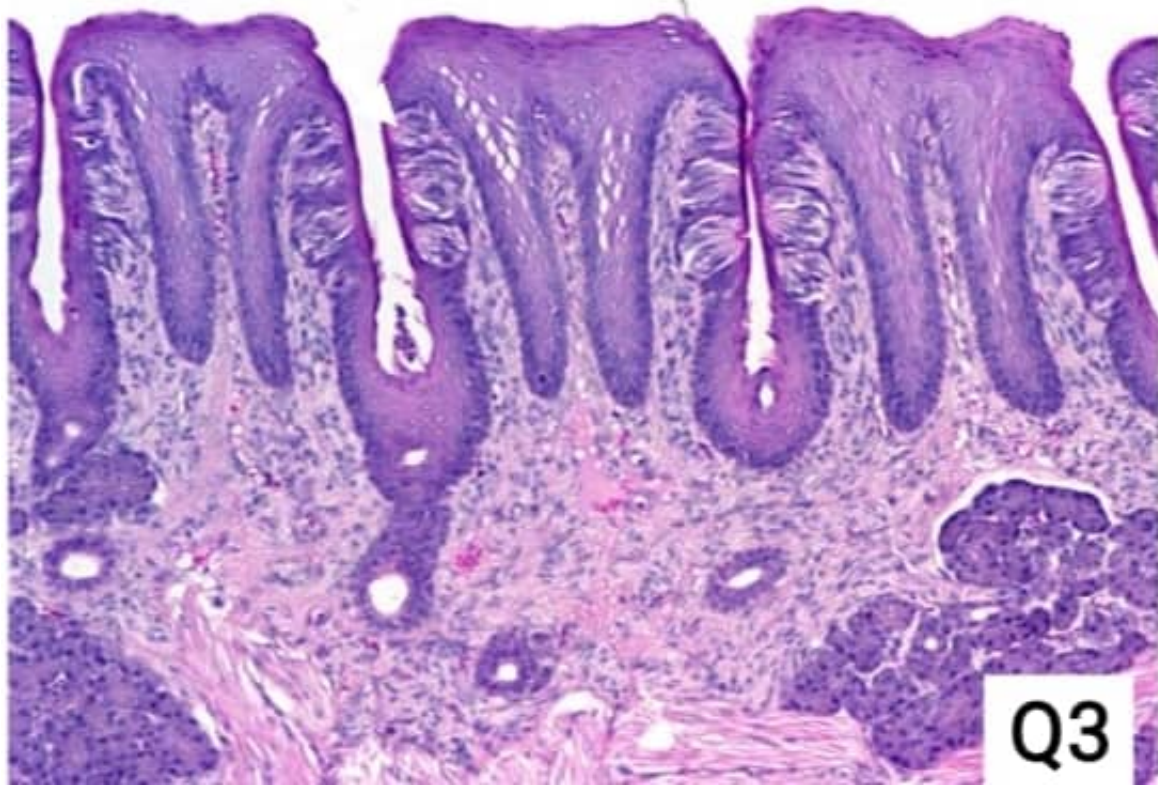


- 1) - A-outer enamel epithelium
- 2) - B-inner enamel epithelium
- 3) + C-Filiform papillae
- 4) - D-stratum intermedium
- 5) - E-stellate reticulum

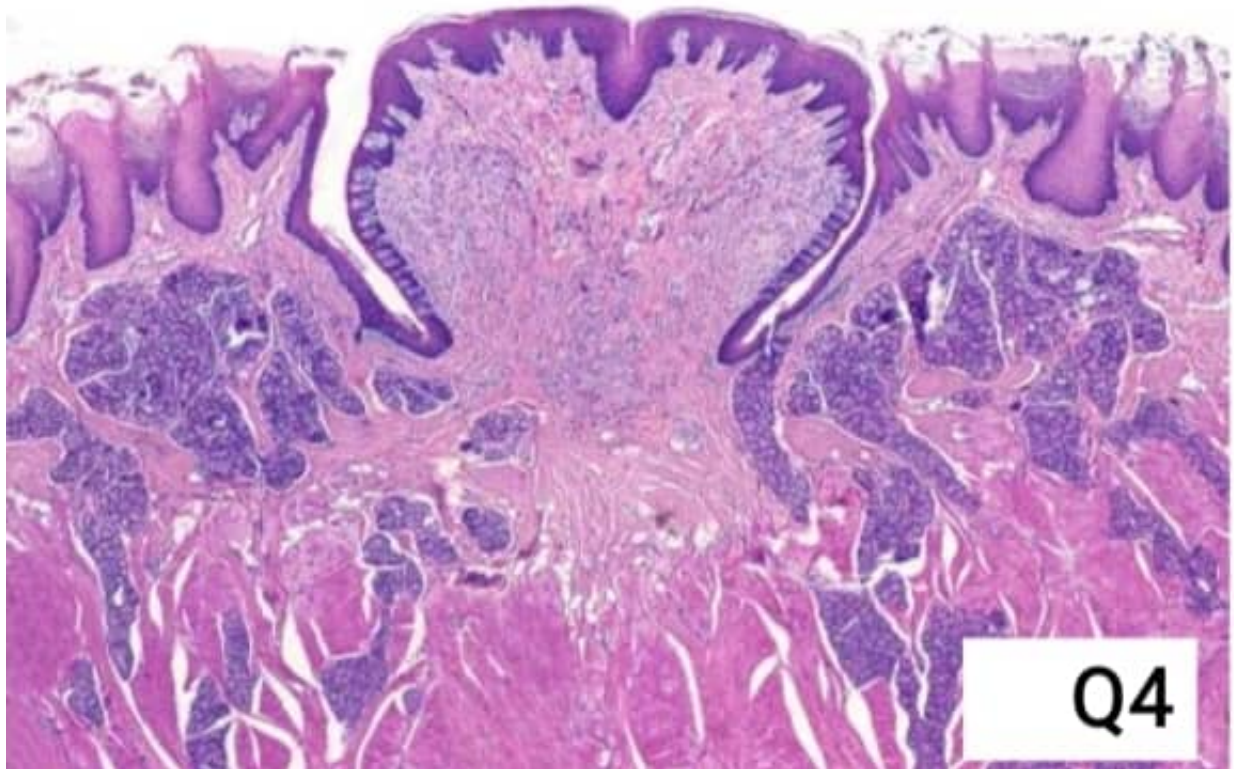
2) IDENTIFY THE STRUCTURE



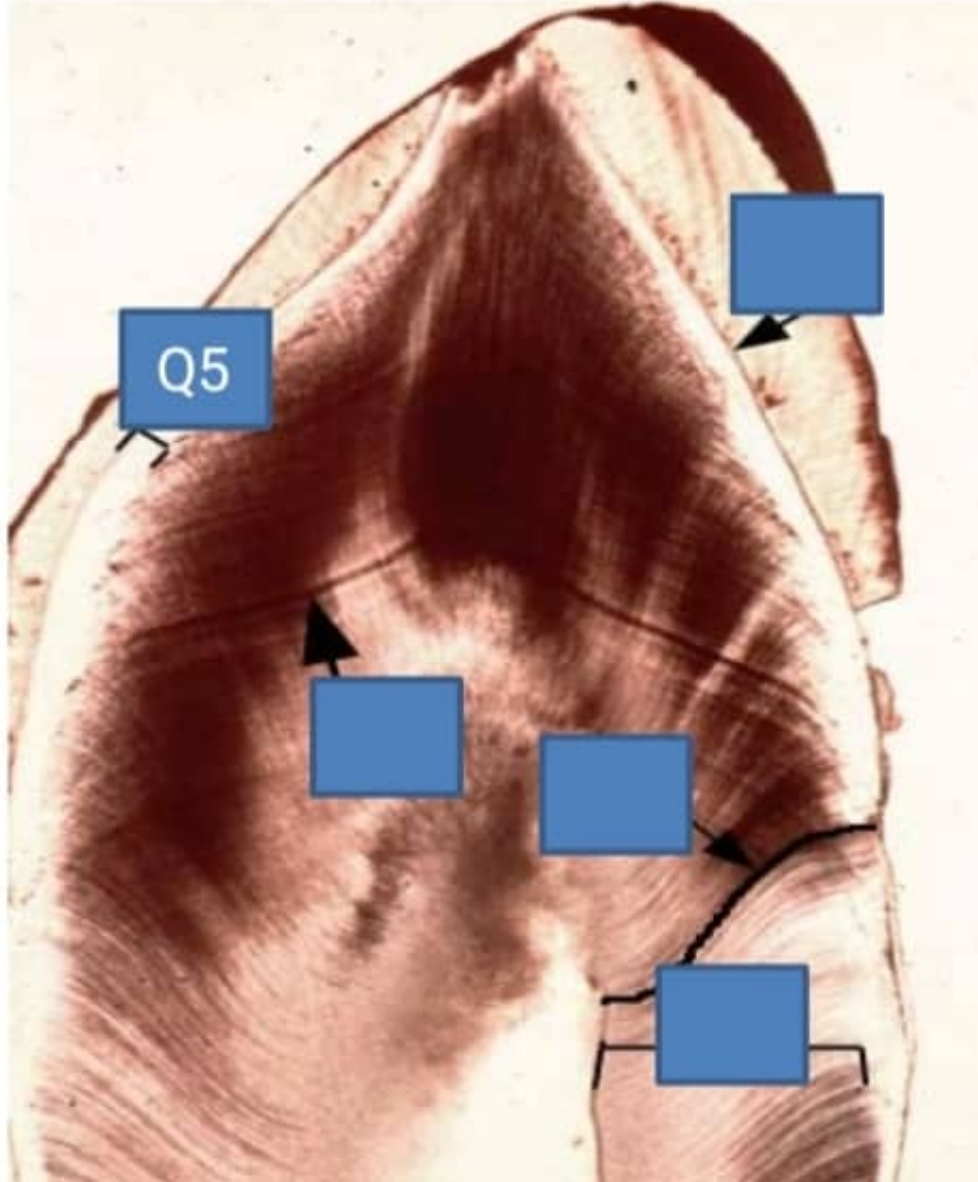
- 1) A-fungiform papillae
 - 2) B-inner enamel epithelium
 - 3) C-oral cavity
 - 4) D-stratum intermedium
 - 5) E-stellate reticulum
- 3) IDENTIFY THE STRUCTURE



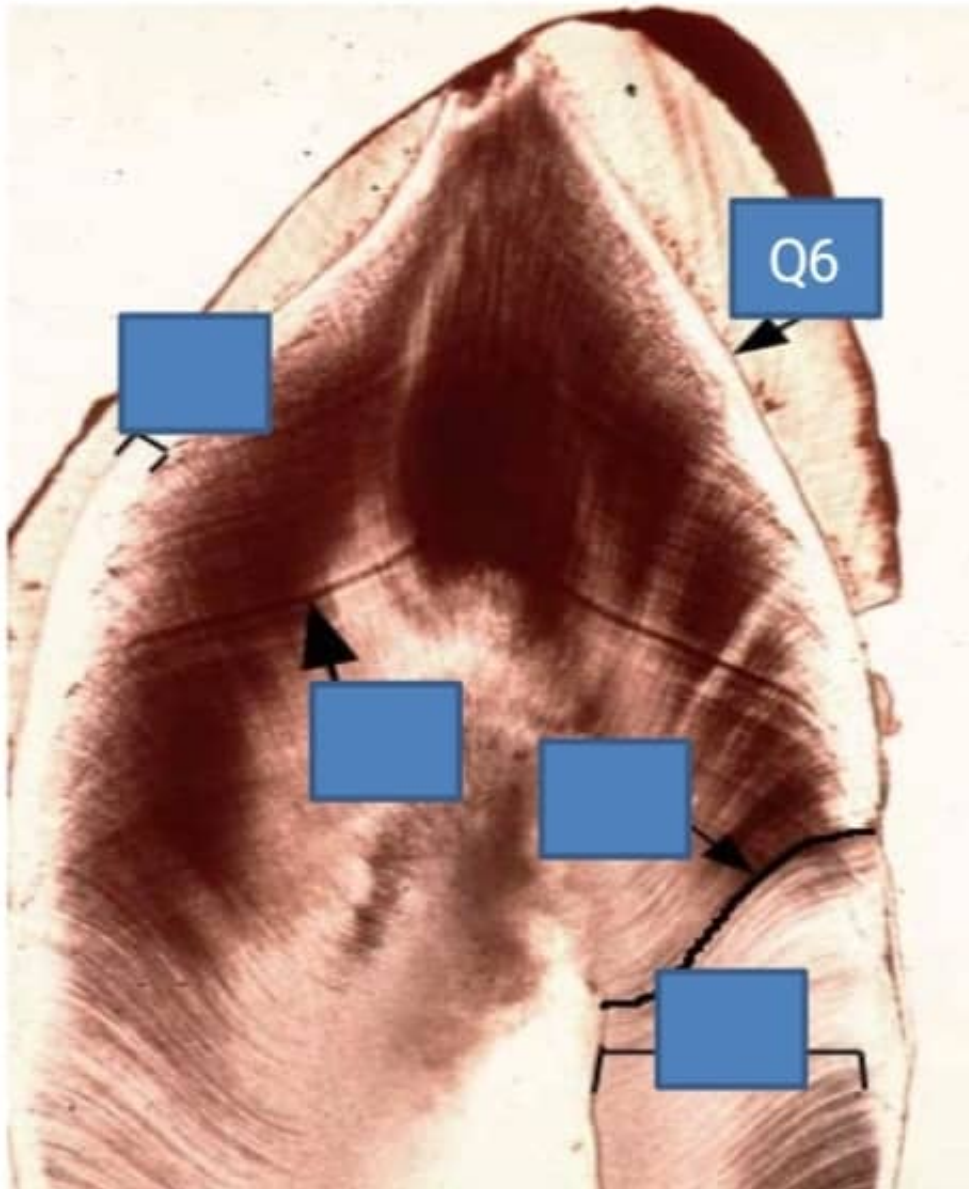
- 1) - A-outer enamel epithelium
 - 2) - B-inner enamel epithelium
 - 3) - C-oral cavity
 - 4) - D-stratum intermedium
 - 5) + E-foliate papillae
- 4) IDENTIFY THE STRUCTURE



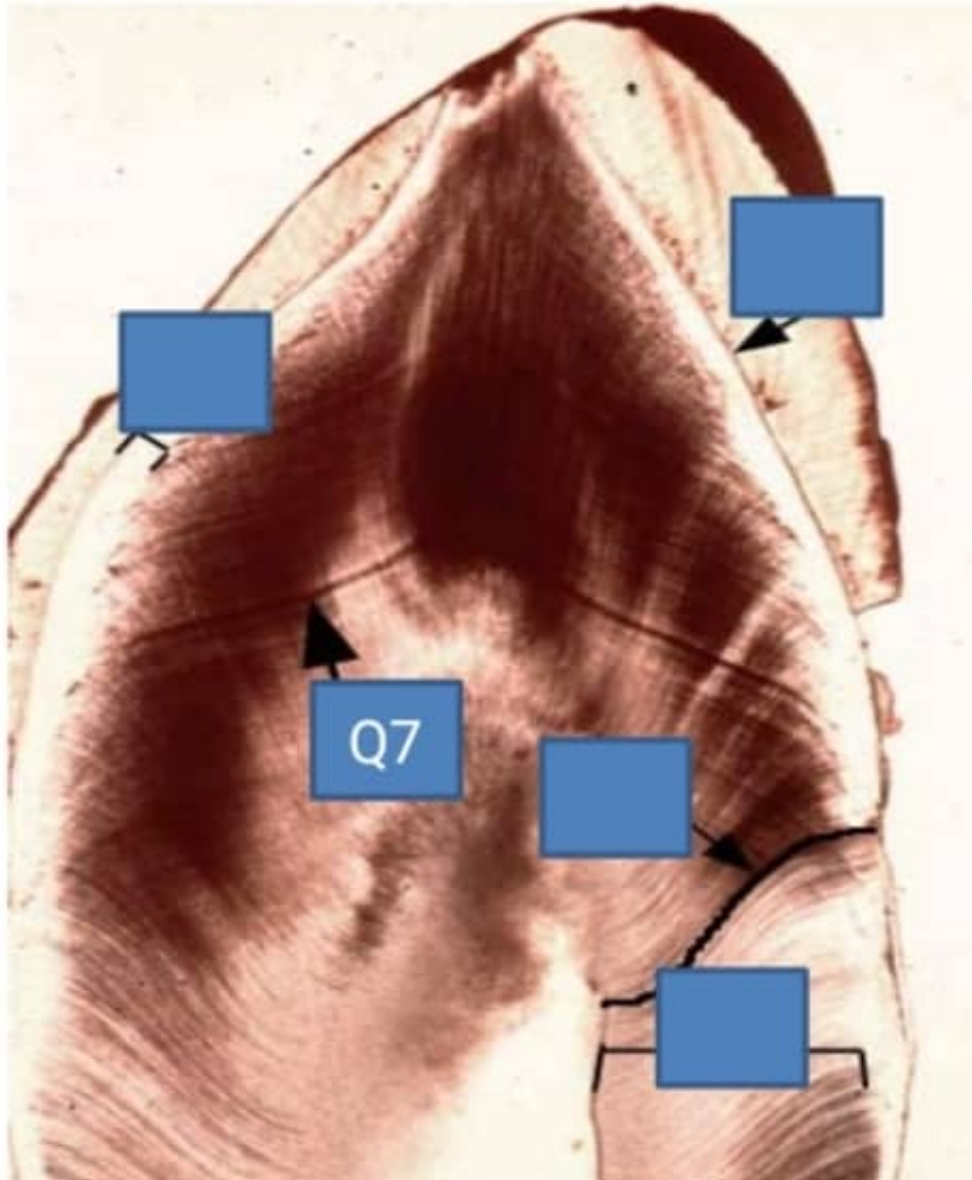
- 1) - A-outer enamel epithelium
 - 2) - B-inner enamel epithelium
 - 3) - C-oral cavity
 - 4) D-circumvallate papillae
 - 5) - E-stellate reticulum
- 5) IDENTIFY THE STRUCTURE



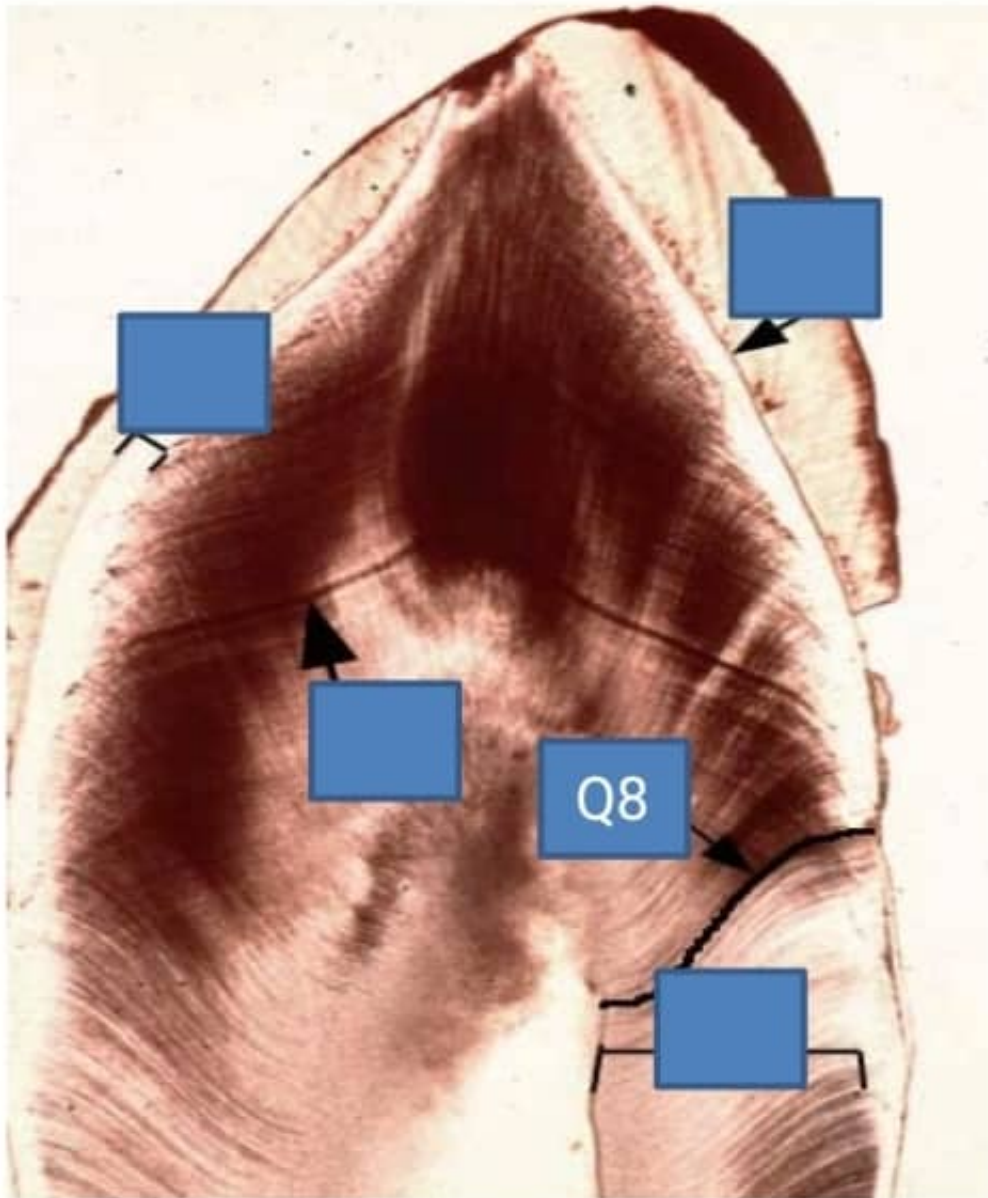
- 1) - A-outer enamel epithelium
- 2) + B-mantle dentin
- 3) - C-oral cavity
- 4) - D-stratum intermedium
- 5) - E-stellate reticulum
- 6) IDENTIFY THE STRUCTURE



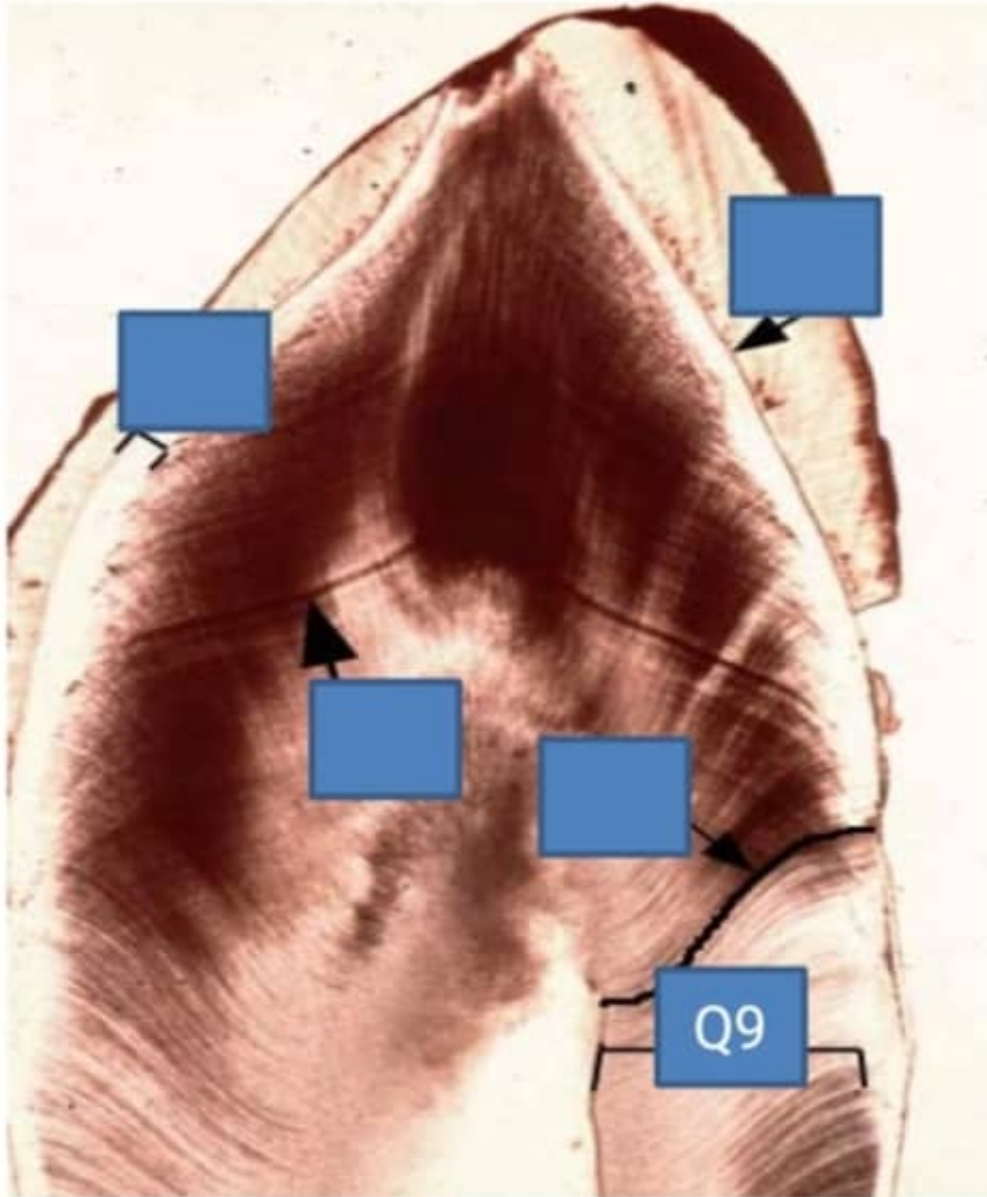
- 1) - A-enamel tuft
 - 2) - B-enamel spindle
 - 3) - C-retzius lines
 - 4) - D-interglobular dentin
 - 5) + E-DEJ
- 7) IDENTIFY THE STRUCTURE



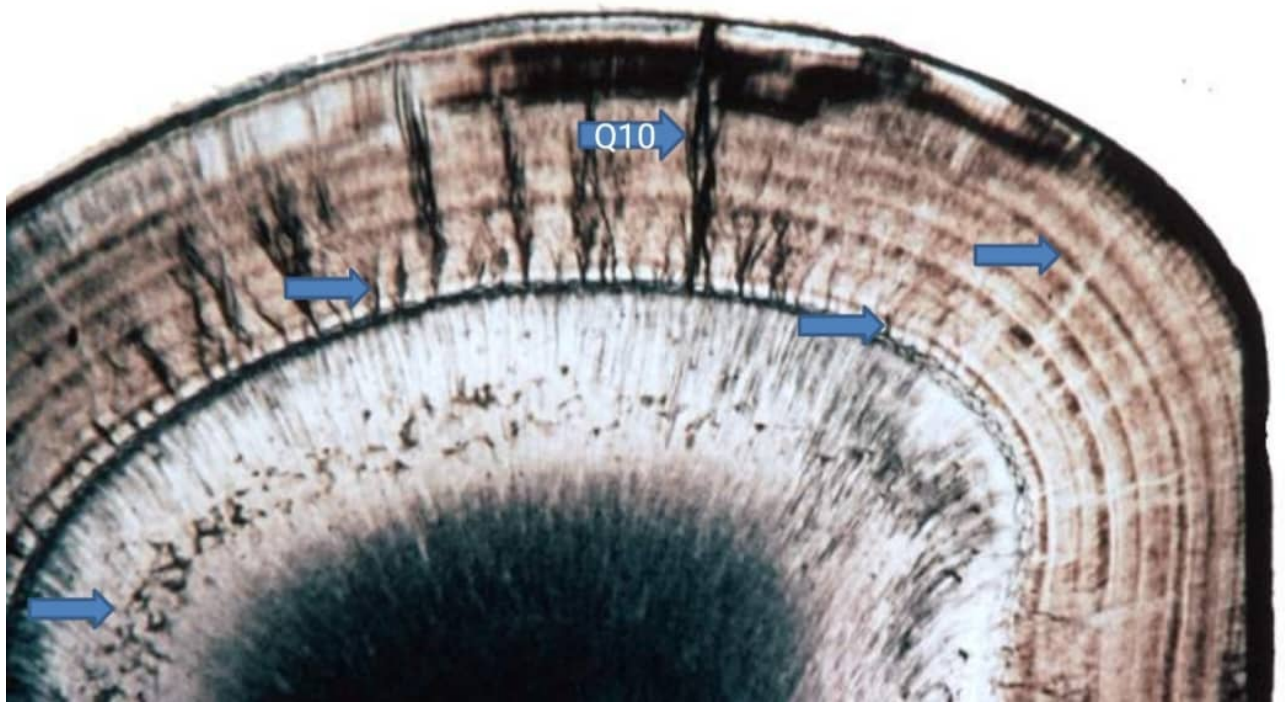
- 1) + A-incremental lines of dentin
 - 2) - B-enamel spindle
 - 3) - C-retzius lines
 - 4) - D-interglobular dentin
 - 5) - E-enamel lamella
- 8) IDENTIFY THE STRUCTURE



- 1) - A-enamel tuft
 - 2) - B-enamel spindle
 - 3) + C-primary curve
 - 4) - D-interglobular dentin
 - 5) - E-enamel lamella
- 9) IDENTIFY THE STRUCTURE

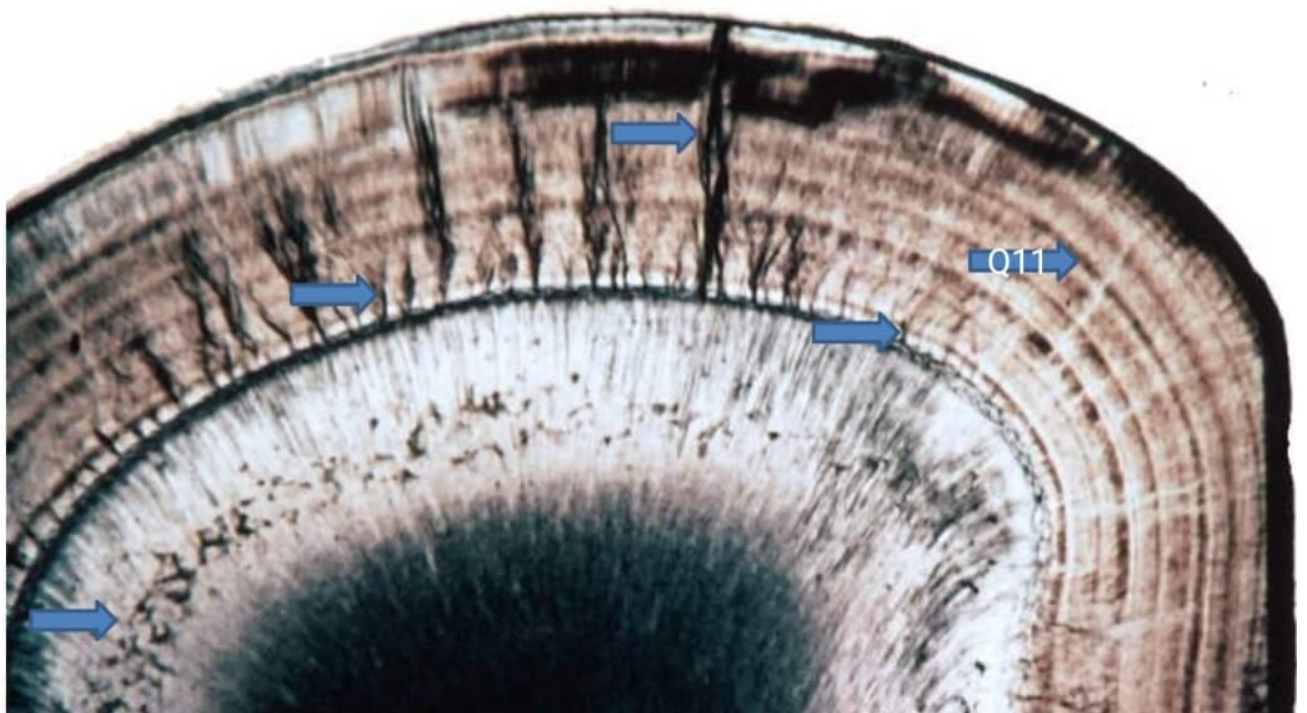


- 1) - A-enamel tuft
 - 2) + B-circumpulpal dentin
 - 3) - C-retzius lines
 - 4) - D-interglobular dentin
 - 5) - E-enamel lamella
- 10) IDENTIFY THE STRUCTURE



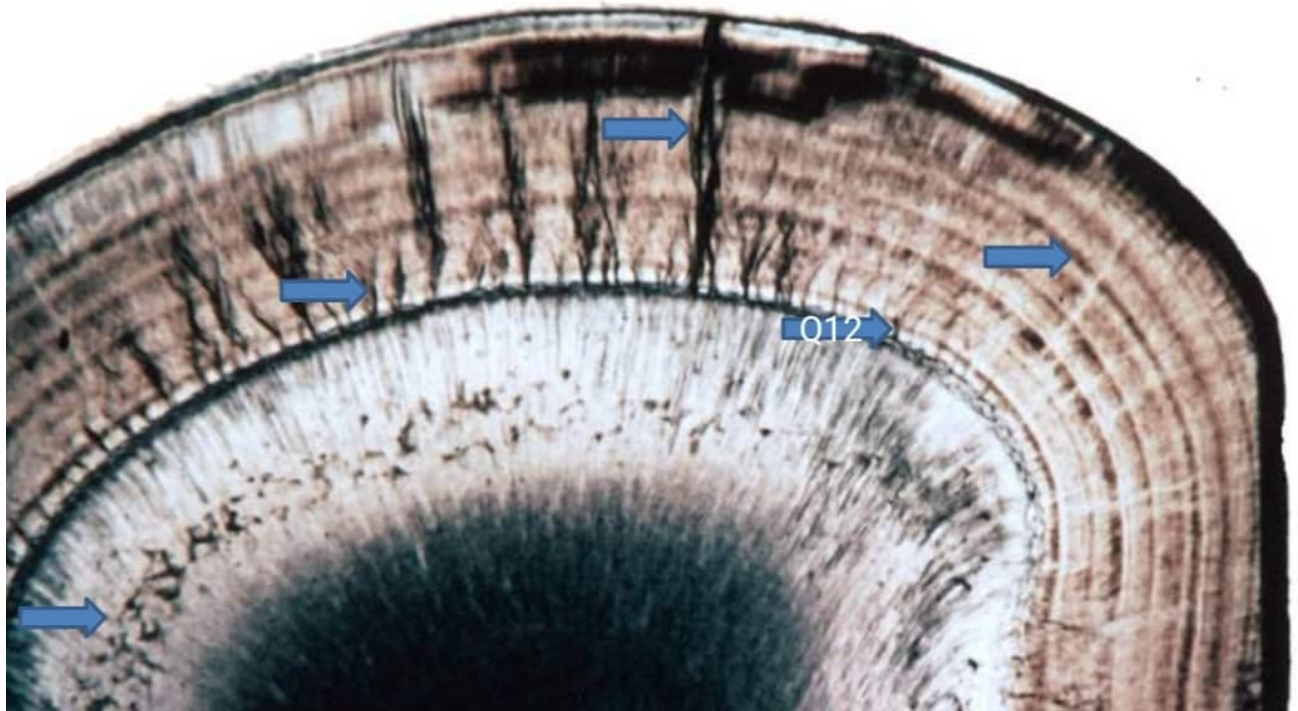
- 1) - A-enamel tuft
- 2) - B-enamel spindle
- 3) - C-retzius lines
- 4) - d- dentin
- 5) + E-enamel lamella

11) IDENTIFY THE STRUCTURE

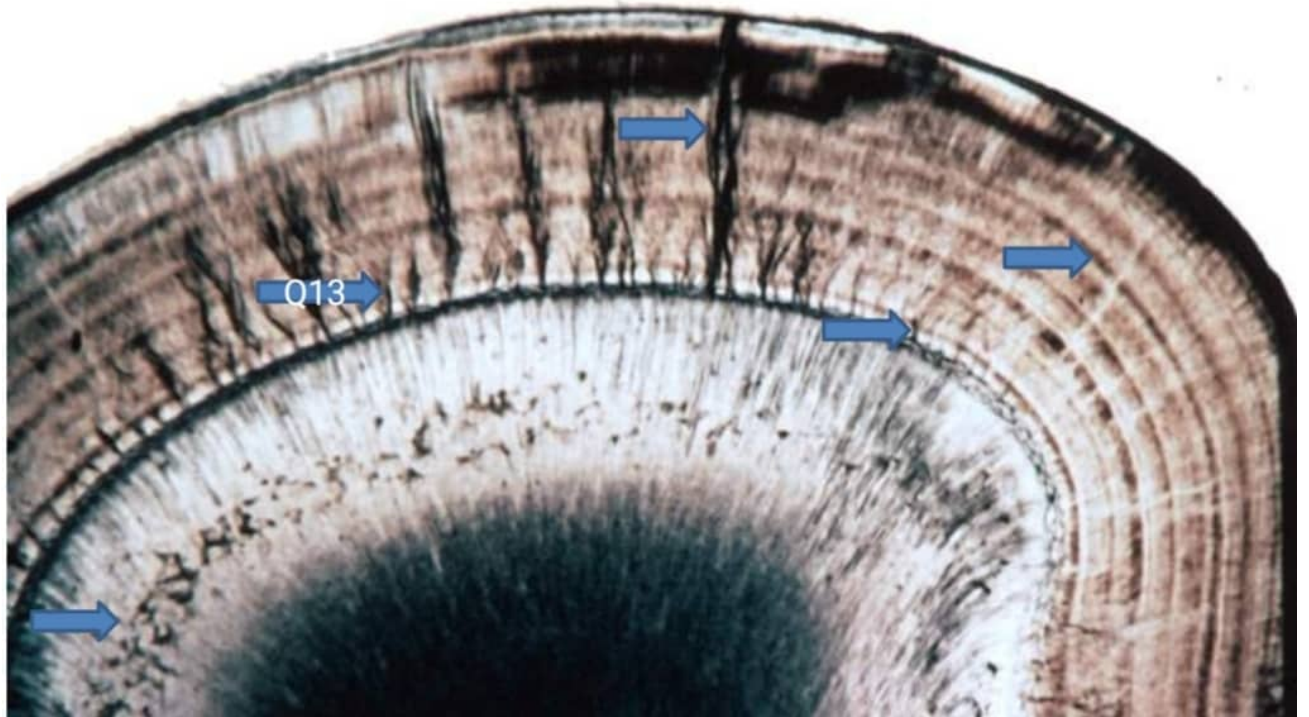




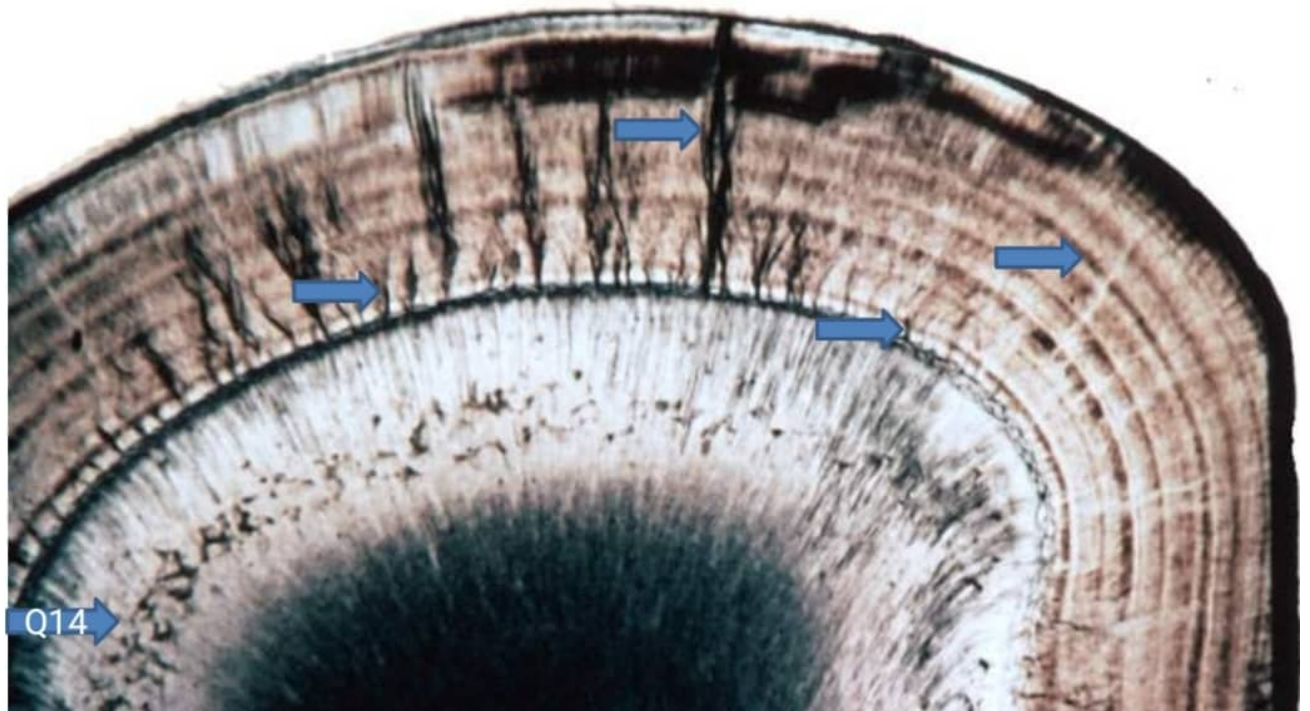
- 1) - A-pulp
 - 2) - B-dental sac
 - 3) - C-epithelium diaphragm
 - 4) - D-dentin
 - 5) + E-incremental lines of retzius
- 12) IDENTIFY THE STRUCTURE



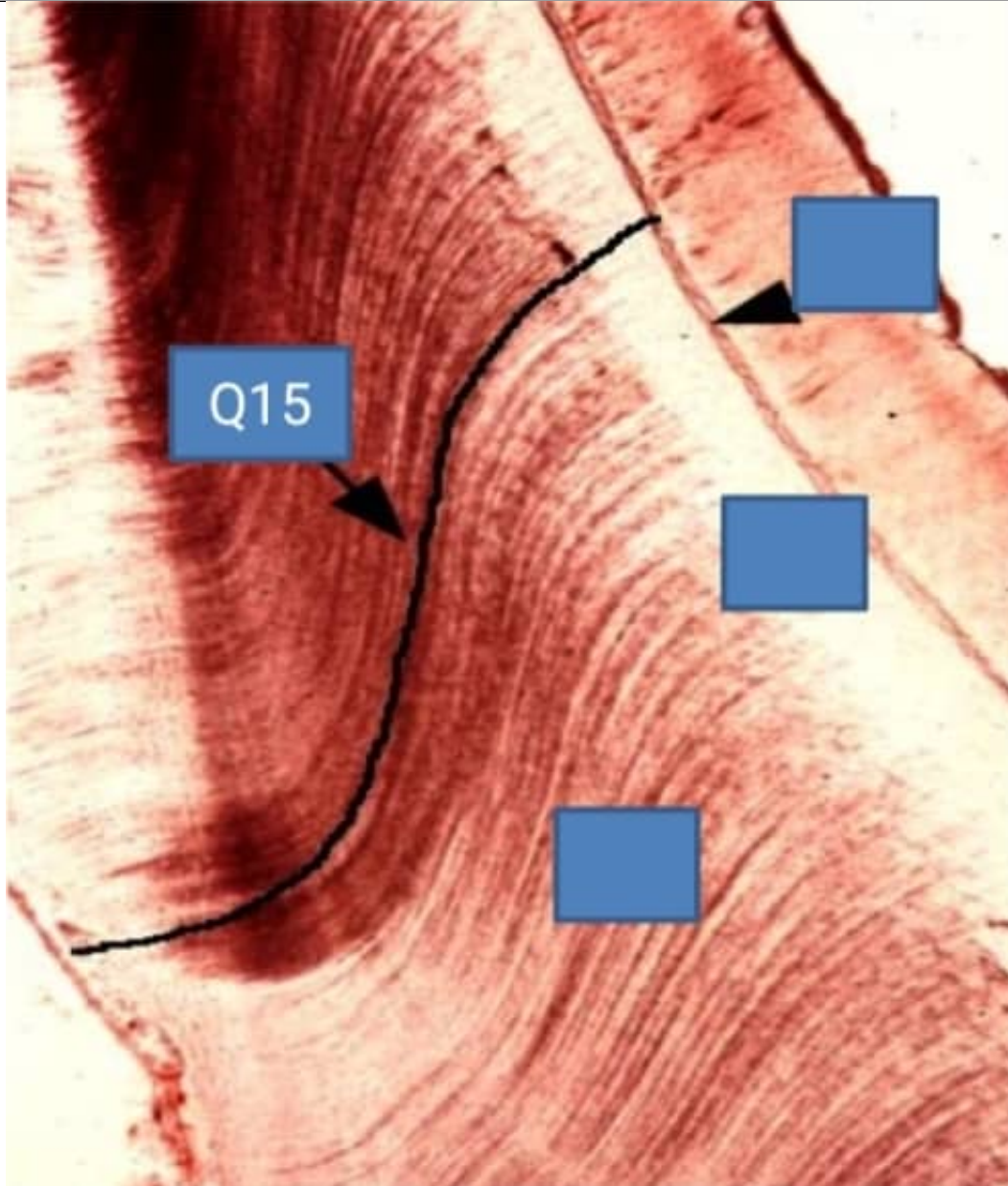
- 1) - A-pulp
 - 2) - B-dental sac
 - 3) - C-epithelium diaphragm
 - 4) + D-enamel spindle
 - 5) - E-enamel
- 13) IDENTIFY THE STRUCTURE



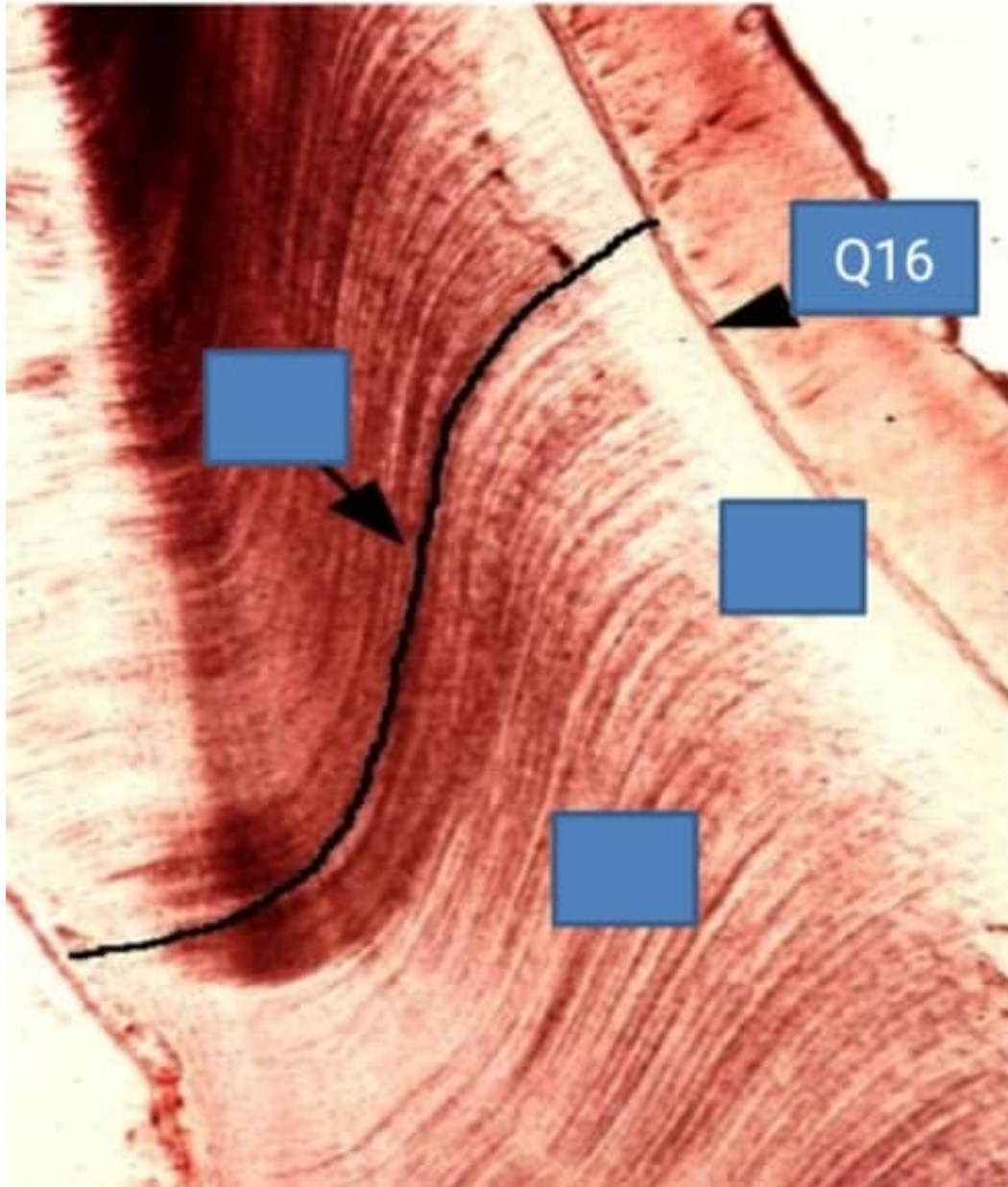
- 1) - A-pulp
 - 2) + B-enamel tuft
 - 3) - C-epithelium diaphragm
 - 4) - D-dentin
 - 5) - E-enamel
- 14) IDENTIFY THE STRUCTURE



- 1) + A-interglobular dentin
 - 2) - B-dental sac
 - 3) - C-epithelium diaphragm
 - 4) - D-dentin
 - 5) - E-enamel
- 15) IDENTIFY THE STRUCTURE

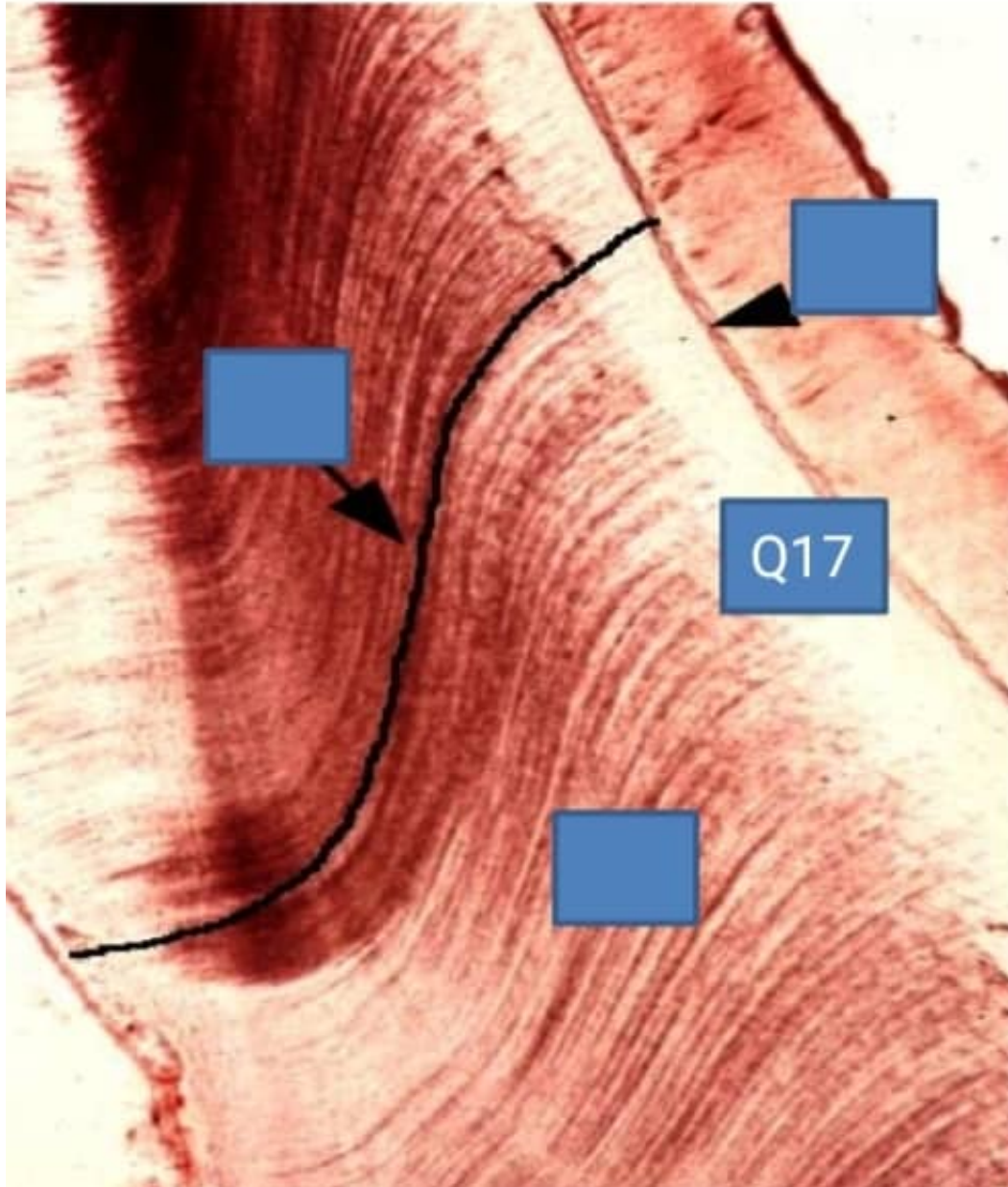


- 1) - A-pulp
 - 2) - B-dental sac
 - 3) C-primary curve of dentinal tubules
 - 4) - D-dentin
 - 5) - E-enamel
- 16) IDENTIFY THE STRUCTURE



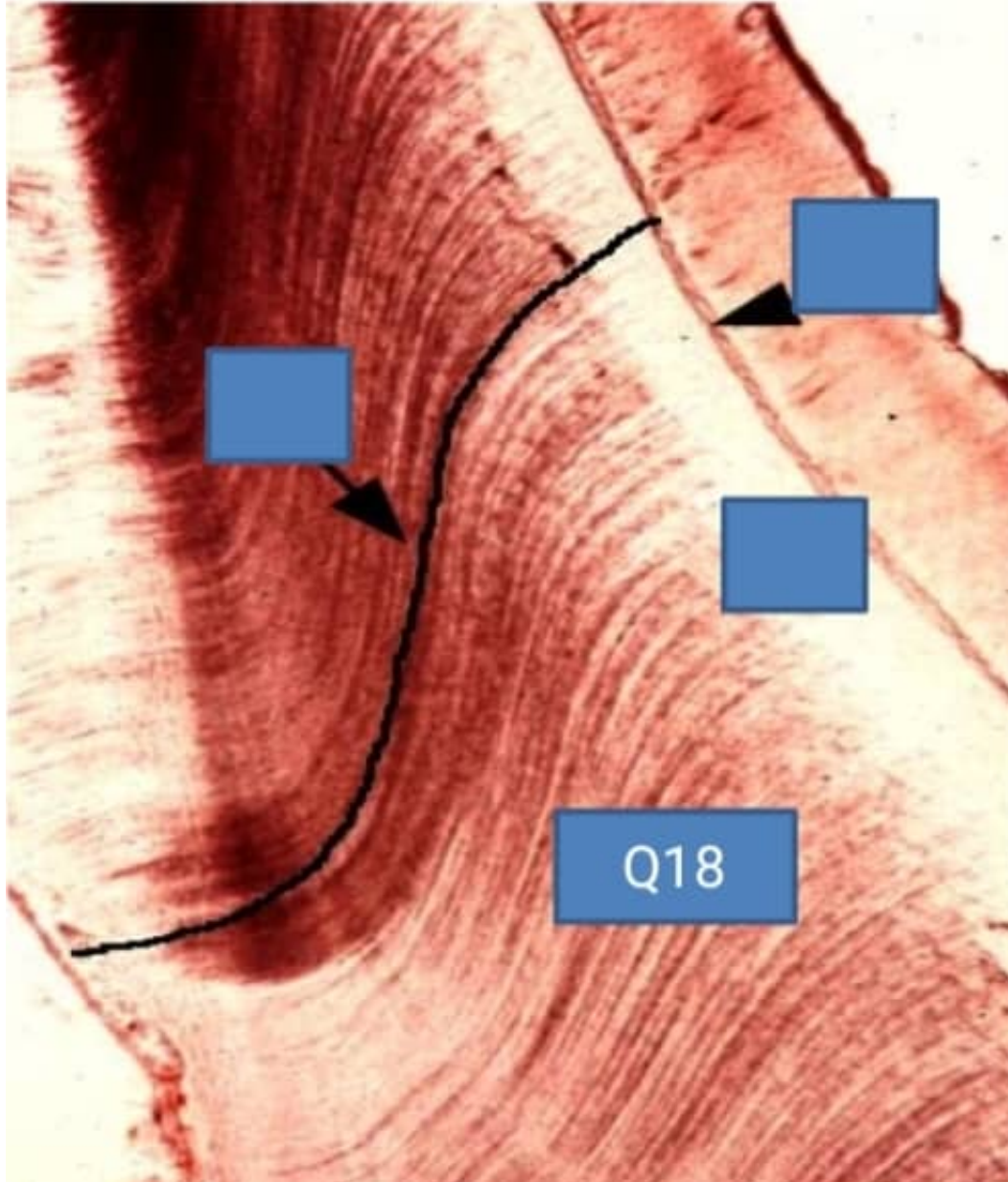
- 1) + A-DEJ
- 2) - B-odontoblast
- 3) - C-predentin
- 4) - D-enamel
- 5) - E-dentin

17) IDENTIFY THE STRUCTURE

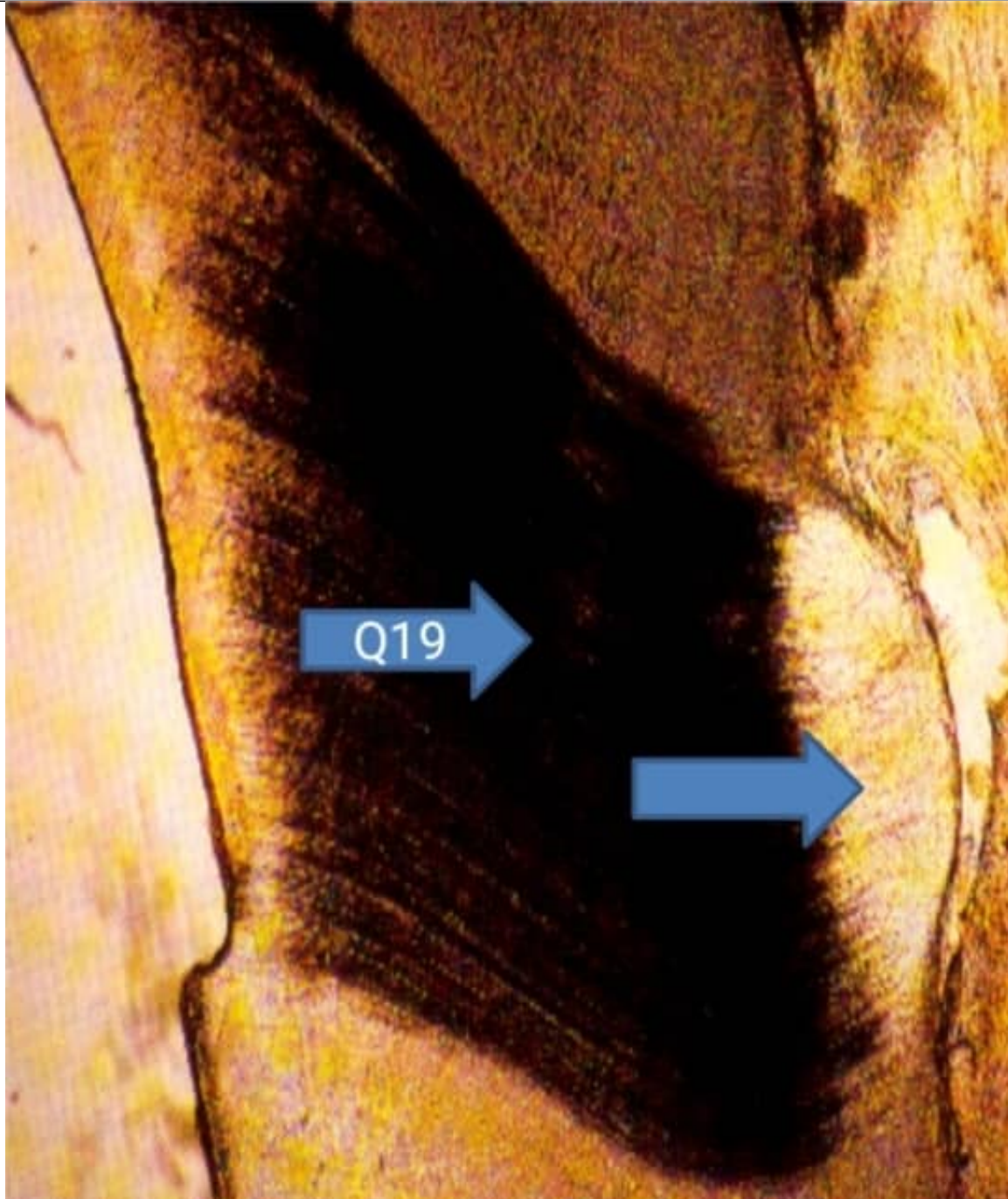


- 1) - A-ameloblast
- 2) - B-odontoblast
- 3) - C-pre dentin
- 4) + D-mantle dentin
- 5) - E-dentin

18) IDENTIFY THE STRUCTURE

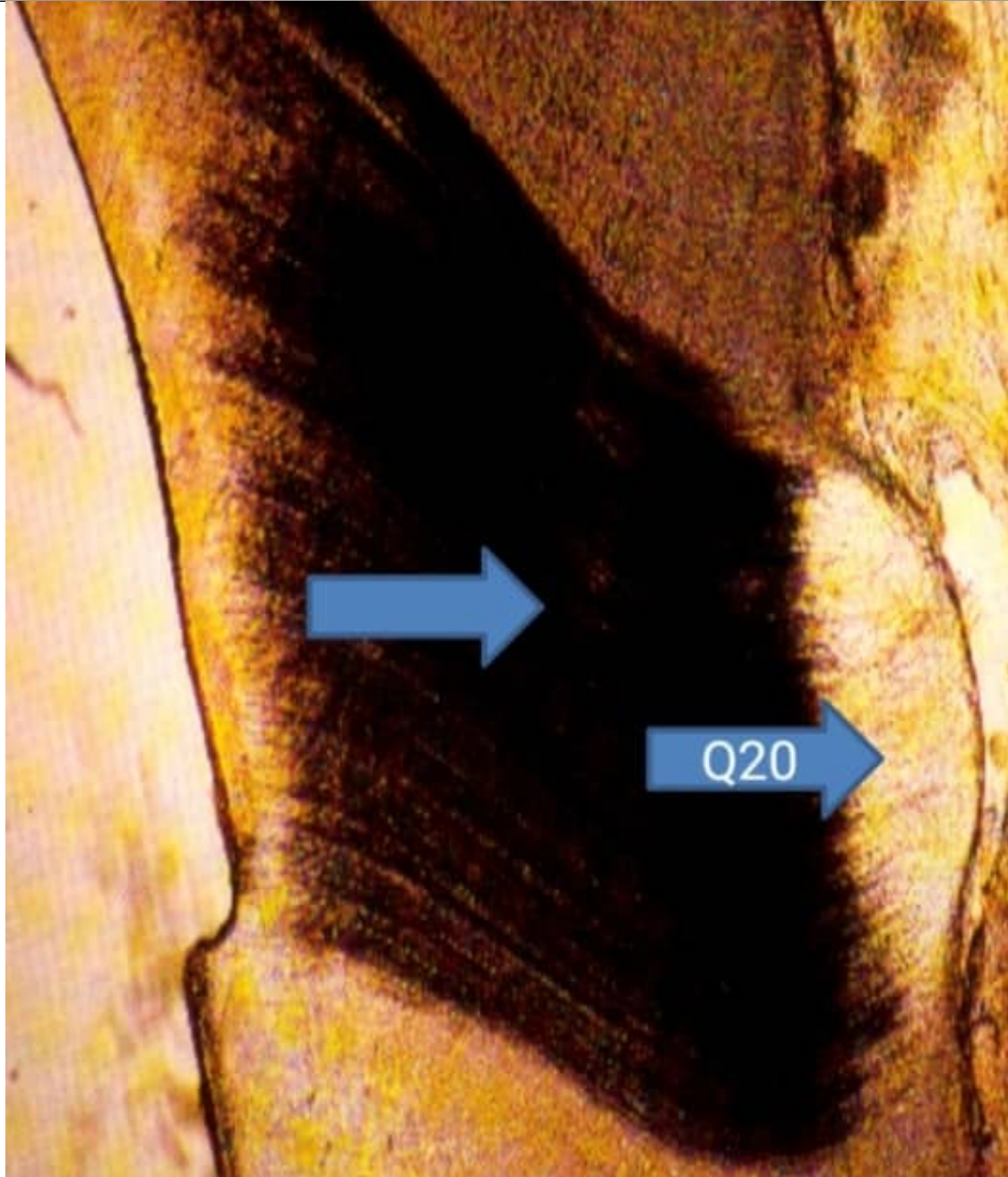


- 1) - A-ameloblast
 - 2) - B-odontoblast
 - 3) - C-predentin
 - 4) - D-enamel
 - 5) + E-circumpulpal dentin
- 19) IDENTIFY THE STRUCTURE

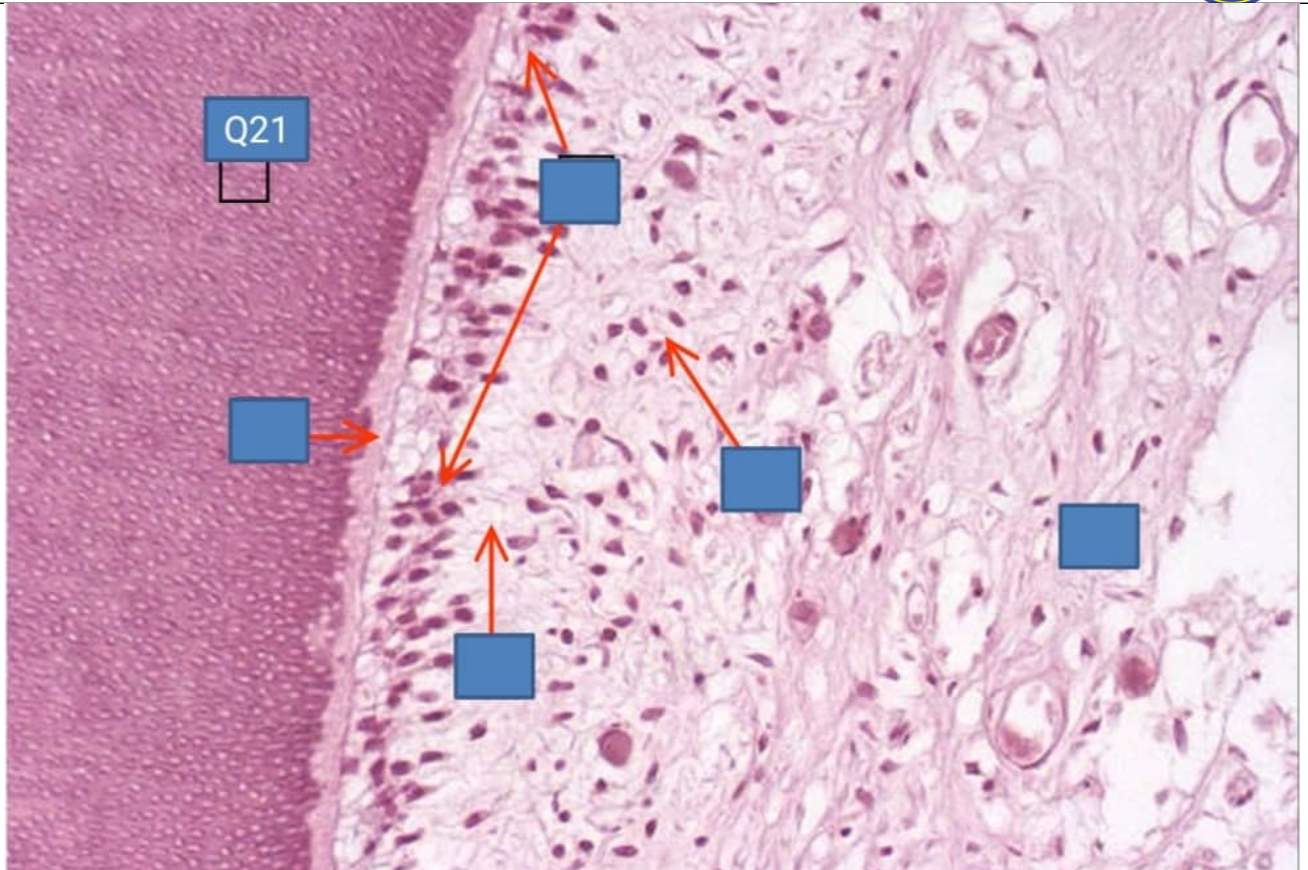


- 1) - A-ameloblast
- 2) - B-odontoblast
- 3) + C-dead tracts
- 4) - D-enamel
- 5) - E-dentin

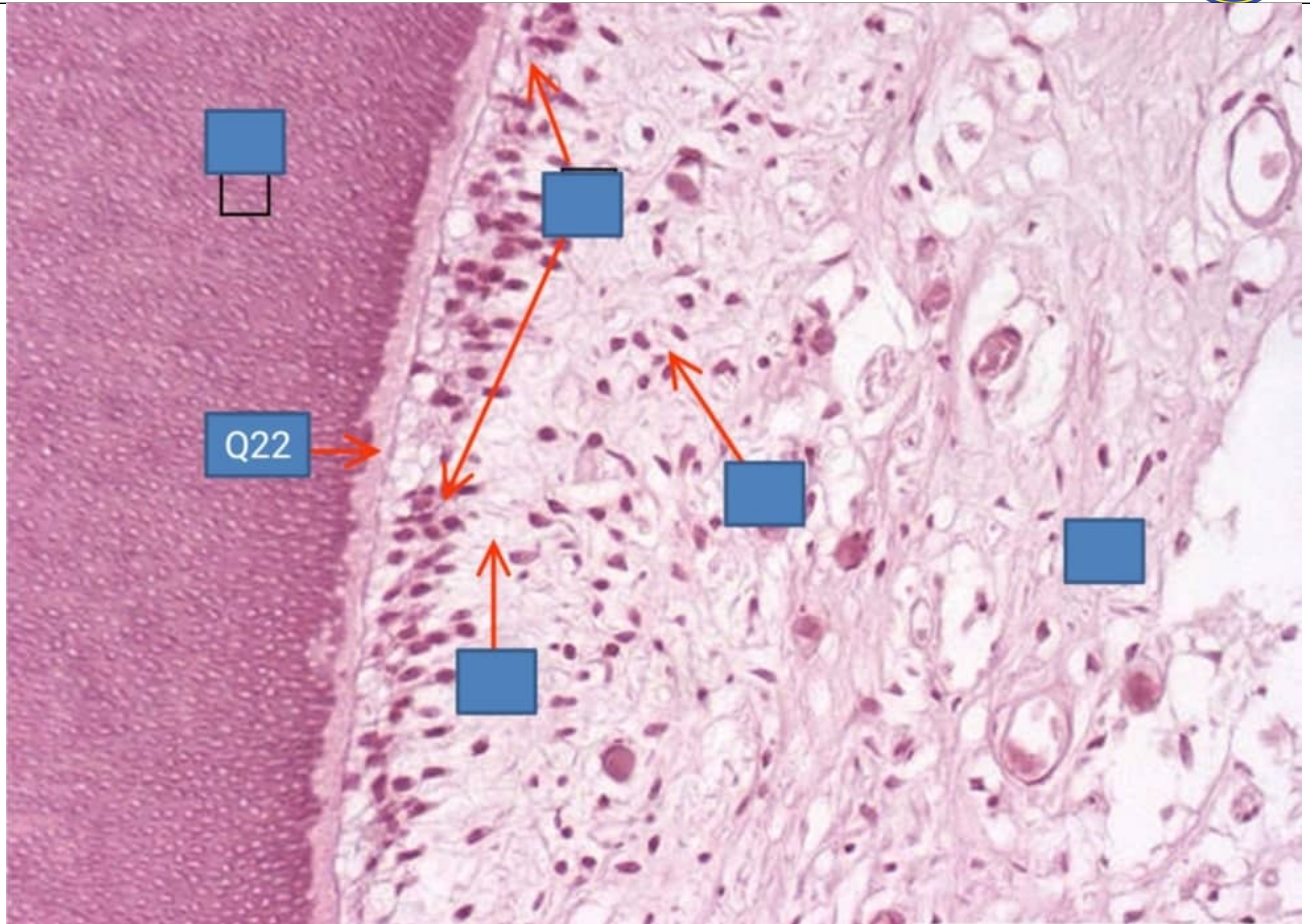
20) IDENTIFY THE STRUCTURE



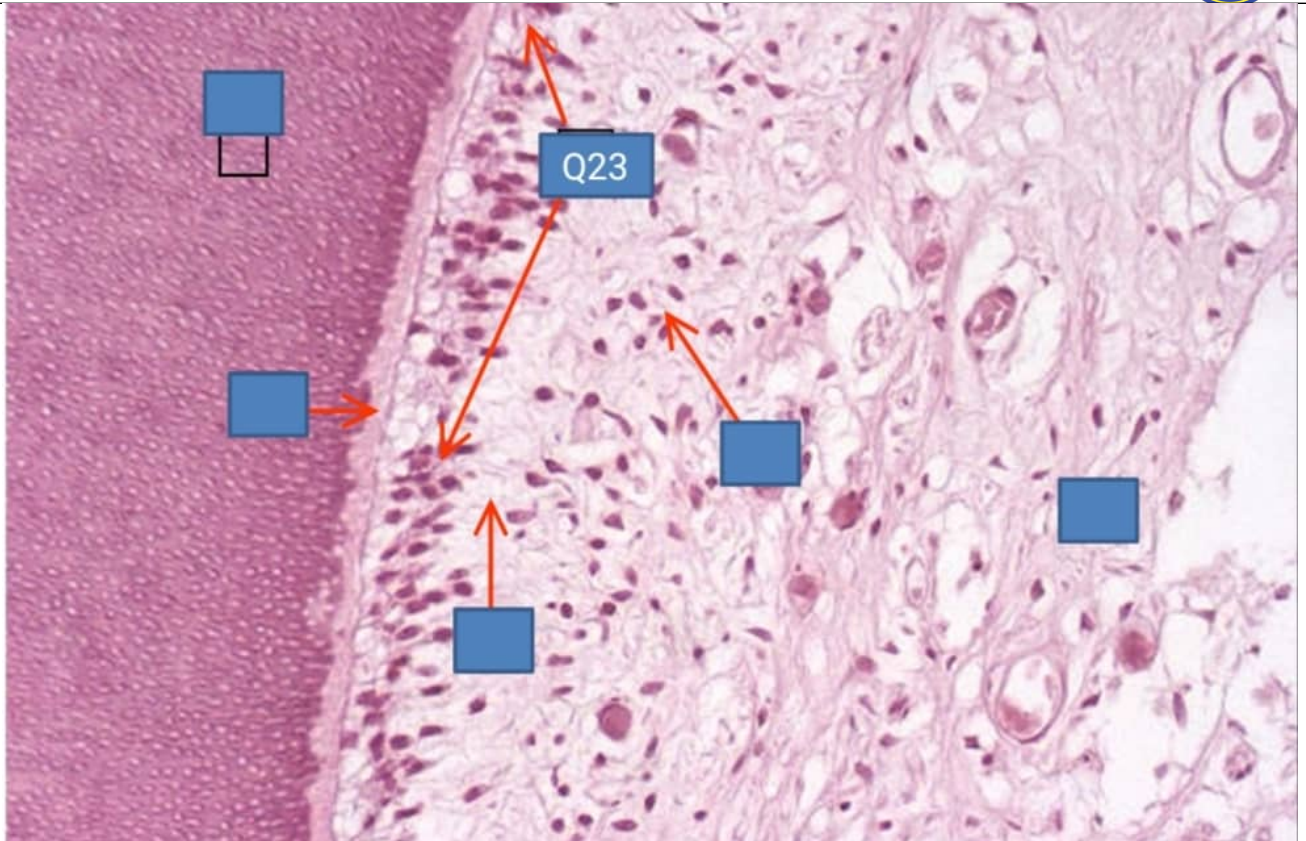
- 1) - A-ameloblast
 - 2) + B-sclerotic dentin
 - 3) - C-predentin
 - 4) - D-enamel
 - 5) - E-dentin
- 21) IDENTIFY THE STRUCTURE



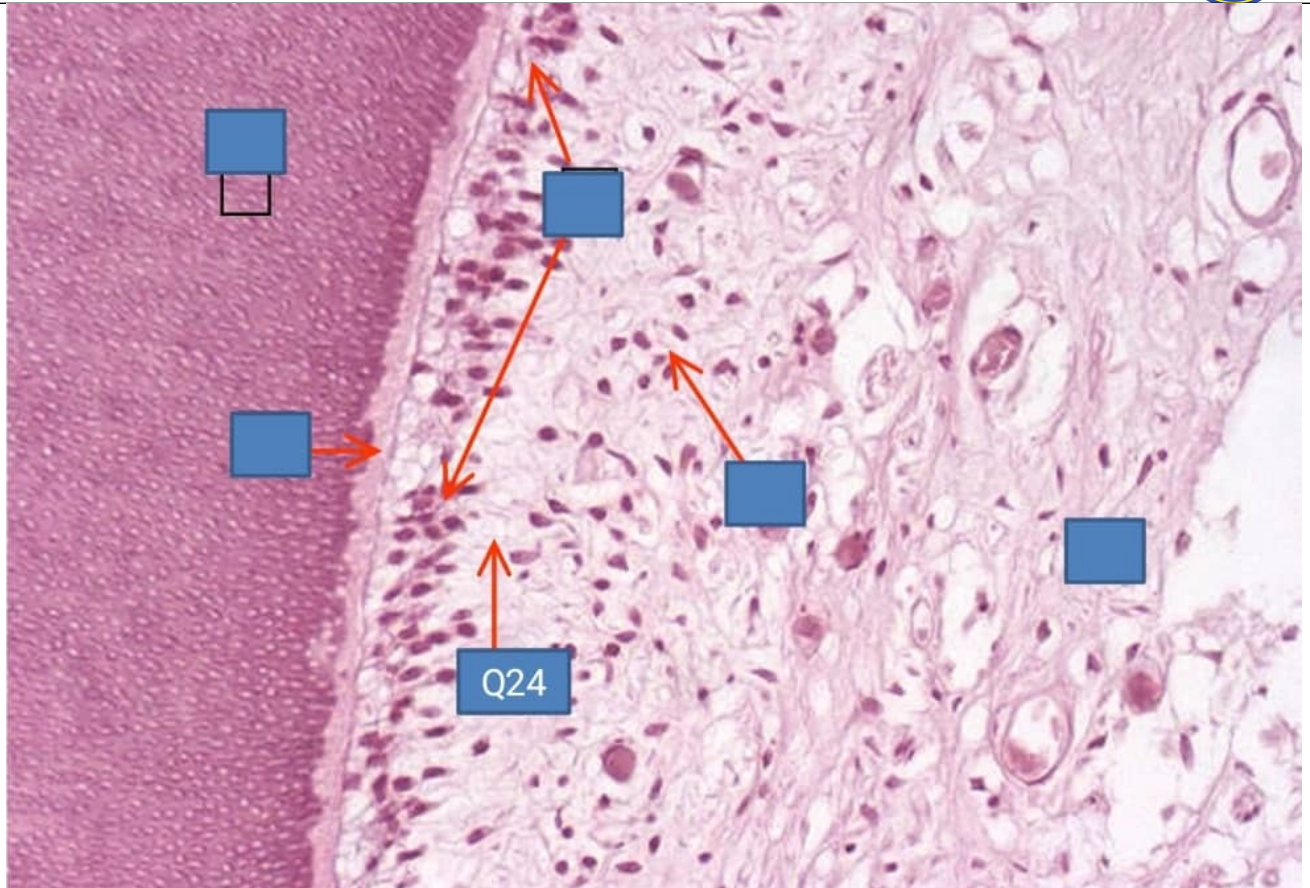
- 1) - A-DEJ
 - 2) - B-INCREMENTAL LINES of dentin
 - 3) - C-primary curve of dentinal tubules
 - 4) + D-dentin
 - 5) - E-circumpulpal dentin
- 22) IDENTIFY THE STRUCTURE



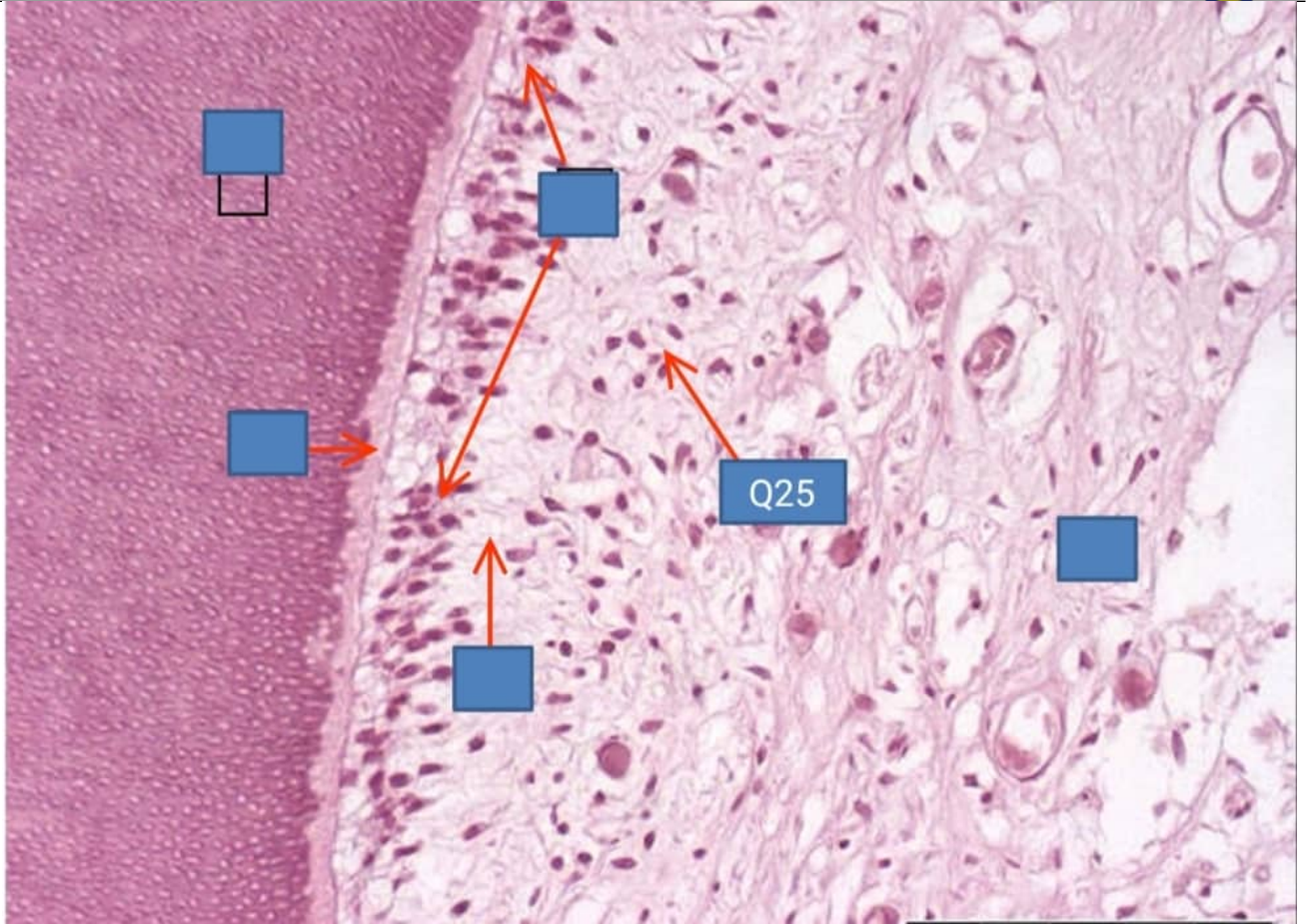
- 1) + A-predentin
 - 2) - B-INCREMENTAL LINES of dentin
 - 3) - C-primary curve of dentinal tubules
 - 4) - D-mantle dentin
 - 5) - E-circumpulpal dentin
- 23) IDENTIFY THE STRUCTURE



- 1) - A-DEJ
 - 2) + B-odontoblastic zone
 - 3) - C-primary curve of dentinal tubules
 - 4) - D-mantle dentin
 - 5) - E-circumpulpal dentin
- 24) IDENTIFY THE STRUCTURE



- 1) - A-DEJ
 - 2) - B-INCREMENTAL LINES of dentin
 - 3) + C-cell free
 - 4) - D-mantle dentin
 - 5) - E-circumpulpal dentin
- 25) IDENTIFY THE STRUCTURE



- 1) - A-DEJ
- 2) - B-INCREMENTAL LINES of dentin
- 3) - C-primary curve of dentinal tubules
- 4) - D-mantle dentin
- 5) + E-cell rich zone