



قائمة الاسئلة 2025-05-18 06:53

كيمياء عقاقير 2 - العقاقير - الرابع - عام - درجة الاختبار (70)

د. بشرى محرم

- 1) Among characters of Pseudotannins
 - 1) - They are Polyhydroxy phenolic compounds
 - 2) - They convert animal hide to leather
 - 3) + They don't convert animal hide to leather
 - 4) - All answers are correct
- 2) β -Myrcene is
 - 1) - a. used for the manufacture of perfumery
 - 2) - b. volatile oil components
 - 3) - c. glycosides
 - 4) + d. Both a and b
- 3) flavonone with alkali give
 - 1) - a- flavone
 - 2) + b- chalcone
 - 3) - c- flavonol
 - 4) - d- both a and b
- 4) Legal's test is test of
 - 1) - Thioglycosides
 - 2) - Cyanoglycosides
 - 3) - Beufadenolids
 - 4) + Cardenolids
- 5) Oil tubes (or vittae) is found in
 - 1) - Lavender oil
 - 2) + Fennel
 - 3) - Citrus limon
 - 4) - Black pepper
- 6) Rotenone is used
 - 1) + as a potent pesticide
 - 2) - for varicose vein
 - 3) - for post menopause syndrome
 - 4) - for hypertension
- 7) Natural detoxification of cyanogenicglycosides In human is by
 - 1) + Thiosulfat sulfurtransferase
 - 2) - stomach pumping
 - 3) - oxygen therapy
 - 4) - chelation of cyanide ions
- 8) Isoflavonoids is compounds
 - 1) - with furan ring
 - 2) + That have ring B attached to C3
 - 3) - That have ring B attached to C-2
 - 4) - the oxygen atom of the pyran ring bears a positive charge
- 9) Which compound is Responsible for pungent odor and taste of sinigrin
 - 1) - a- HCN
 - 2) + b- Allyl isothiocyanat
 - 3) - c- p-hydroxybenzyl isothiocyanate
 - 4) - d- both a and b



- 10) Hamamelis leaves is used
- 1) - cardiotonic
 - 2) ☒ Anti-hemorrhagic
 - 3) - Anti-uremic
 - 4) - Non answer is correct
- 11) Purpurea glycoside A with enzyme, hydrolyses to
- 1) - Digitoxin + glucose + digitoxose
 - 2) - Digitoxigenin + glucose + digitoxose
 - 3) ☒ Digitoxin + glucose
 - 4) - Non answer is correct
- 12) epicatechin of rhubarb is used
- 1) ☒ a- as antiuremic
 - 2) - b- for constipation
 - 3) - c- for heart disease
 - 4) - d- both a and b
- 13) Goldbeaters skin test give positive result with
- 1) - Cardiac glycoside
 - 2) ☒ True Tannins
 - 3) - Pseudotannin
 - 4) - Flavonoids
- 14) Cardiac Glycosides are
- 1) - Reducing Fehling's solutions
 - 2) - Volatile
 - 3) ☒ Soluble in water
 - 4) - All answers are correct
- 15) Essential oil could be divided into
- 1) - Monoterpenes and alkaloids
 - 2) - Aromatic compounds and diterpens
 - 3) ☒ Sesquiterpenes and monoterpens
 - 4) - All answers are correct
- 16) cardiac glycosides characterized by
- 1) - A lactone ring attached to C-17 α -position
 - 2) ☒ A lactone ring attached to C-17 β -position
 - 3) - A sugar moiety at C-3 α -position
 - 4) - The A, B, C and D rings junction have trans-cis-trans configuration
- 17) general character of saponin glycosides
- 1) - a- produce yellow color in aqueous
 - 2) - b- soluble in benzene
 - 3) ☒ c- haemolysis of RBCs
 - 4) - d- both a and c
- 18) Cytotoxic anoxia of cyanogenic glycosides is caused by
- 1) ☒ a- interrupted reoxidation of cytochrome C oxidase
 - 2) - b- increase O₂ in the cells by interrupted reoxidation of cytochrome C oxidase
 - 3) - c- increase CO₂
 - 4) - d- both a and b
- 19) Which compound responsible to astringent properties of plants
- 1) - Alkaloids
 - 2) - Essential oils
 - 3) ☒ Tannins



- 4) - Glycosides
- 20) Dioscin is
- 1) - a. A cardiac glycosides
 - 2) - b. A Tannin and used as astrangent
 - 3) ☒ c. A Saponin and used to synthesis sex-hormones
 - 4) - d. both a and c
- 21) Which compounds used for ink manufacture
- 1) - Cardiac glycosides
 - 2) - Alkaloids
 - 3) ☒ Tannins
 - 4) - Flavonoids
- 22) linermarin is hydrolysed to
- 1) ☒ Acetone + HCN
 - 2) - Benzaldehyde + HCN
 - 3) - Benzaldehyde +H₂S
 - 4) - Acetone + H₂S
- 23) Pharmacokinetic of cardiac glycosides is important to be studied
- 1) - Due to they have a wide therapeutic index
 - 2) - To evaluate their Absorption after oral administration
 - 3) - To evaluate their Onset of action
 - 4) ☒ Due to their narrow therapeutic index
- 24) galls are used
- 1) - for dyeing
 - 2) - in the manufacture of inks
 - 3) - as hemostatic agent
 - 4) ☒ All answers are correct
- 25) Hesperidin is obtained from
- 1) - a. Banana
 - 2) - b. Liquiric
 - 3) ☒ c. Limon
 - 4) - d. A and b
- 26) Carthamin is used
- 1) - For angina
 - 2) - For cardiac arrhythmia
 - 3) ☒ As coloring agent
 - 4) - for diabetes
- 27) Umbelliferone is used
- 1) - a. for sunscreen preparation
 - 2) - b. As pH indicator
 - 3) - c. Cardiotonic
 - 4) ☒ d. Both A and b
- 28) Cyanogenic glycosides are derivatives of α -hydroxynitrile which
- 1) - a- On hydrolysis with α -hydroxynitrile lyase give HCN + ketone
 - 2) - b- Is with glucosyl transferase give Cyanogenic glycosides
 - 3) - c- With beta glucosidase give HCN + ketone
 - 4) ☒ d- Both a and b
- 29) Mechanism of action of Digoxin
- 1) - Stimulate Na⁺/ K⁺-pump lead to rise in Na⁺ and Ca²⁺ in the cell and therefore increases contraction



- 2) ☒ Inhibit Na⁺/ K⁺-pump lead to rise in Na⁺ and Ca²⁺ in the cell and therefore increases contraction
- 3) ☐ Inhibit Na⁺/ K⁺-pump lead to decrease in Na⁺ and Ca²⁺ in the cell and therefore increases contraction
- 4) ☐ Non answer is correct
- 30) Which compounds that its color is pH dependent
- 1) ☐ anthracin
- 2) ☒ Anthocyanidins
- 3) ☐ Chalcon
- 4) ☐ Isoflavonoids
- 31) The importance of the sugar moiety in cardiac glycosides is
- 1) ☐ for absorbtion the molecule
- 2) ☐ To solubilize of the molecule
- 3) ☐ To carry the aglycone to the site of action
- 4) ☒ All answers are correct
- 32) scillaridin A has less activity than digitalis cardiac glycosides because its poorly absorbed from the GIT
- 1) ☒ true.
- 2) ☐ false.
- 33) which cardiotonic compounds has high polar character
- 1) ☐ digioxin
- 2) ☐ scillarin
- 3) ☒ G-strophanthin
- 4) ☐ K-strophanthin
- 34) thio glycosides are o-glycosides and produce HCN gas on hydrolysis
- 1) ☐ true.
- 2) ☒ false.
- 35) Water and Steam Distillation is suitable for
- 1) ☐ plant material which their constituents are not degraded by boiling.
- 2) ☐ volatile oils mostly undergo decomposition on distillation
- 3) ☒ plant material which their constituents would be decomposed by direct boiling.
- 4) ☐ plant sources which contain very small amount of volatile oils
- 36) Effect of concentrated acid on cardiac glycosides is
- 1) ☐ Hydrolyzing the glycosides to aglycones and sugar units.
- 2) ☒ Giving 14, 15 anhydro derivatives by elimination of OH group at C-14.
- 3) ☐ isomerisation of the lactone ring
- 4) ☐ cleavage of the lactone ring
- 37) Aesculin is used
- 1) ☐ For varicose veins
- 2) ☐ For haemorrhoids
- 3) ☐ prostate congestion
- 4) ☒ all answers are correct
- 38) Cardinolides give positive with Kedd's test due to
- 1) ☒ The presence of CH₂ in the lactone ring
- 2) ☐ The presence of β-sugar
- 3) ☐ The presence of steroids
- 4) ☐ All answers are correct
- 39) patients with history of cardiac problems should not take glycyrrhizin due to
- 1) ☐ glycyrrhizin has anti-inflammatory effect
- 2) ☐ glycyrrhizin has histamine effect
- 3) ☐ glycyrrhizin decrease sodium and fluid retention

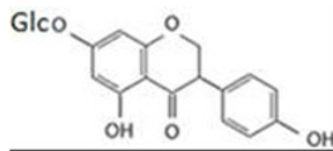


- 4) ☒ glycyrrhizin enhances sodium and fluid retention
- 40) Volatile oil character
- 1) ☒ On light oxidized and resinify
 - 2) ☐ Saponifies with alkali
 - 3) ☐ Leaves permanent spot
 - 4) ☐ non answer is correct
- 41) which compound is chalcones
- 1) ☒ Carthamin
 - 2) ☐ dioscin
 - 3) ☐ rutin
 - 4) ☐ linmarin
- 42) Glycyrrhizin is better than aspirin because
- 1) ☐ Has anti-inflammatory effect
 - 2) ☒ Treating peptic ulcer
 - 3) ☐ Has cardiotonic effect
 - 4) ☐ All answers are correct
- 43) lemon oil is extracted by
- 1) ☐ a. hydodistillation
 - 2) ☒ b. Scarification Process
 - 3) ☐ c. Hexane or benzene
 - 4) ☐ d. B and c
- 44) Rutin is used
- 1) ☐ a- to enhance the tensile strength of capillary walls
 - 2) ☐ b- to decrease the capillary fragility
 - 3) ☐ c- to increase the capillary fragility
 - 4) ☒ d- both a and b
- 45) Kellar-Kiliani Test is test for
- 1) ☐ a- steroidal nucleus
 - 2) ☒ b- 2-deoxy sugar
 - 3) ☐ c- -CH₂- group of the lactone ring
 - 4) ☐ d- Both a and c
- 46) Which compound is thioglycosides
- 1) ☐ cumarin
 - 2) ☒ sinigrin
 - 3) ☐ Daphnin
 - 4) ☐ Linamarin
- 47) Enfleurage Method is used to
- 1) ☐ a. for the preparation of the finest brands of perfume oil
 - 2) ☐ b. Extract volatile oil which present in the fresh plant sources e.g Jasmin
 - 3) ☐ c. The citrous fruit e.g., orange
 - 4) ☒ d. Both a and b
- 48) Sodium picrate is specific test for
- 1) ☐ Thioglycosides
 - 2) ☐ Anthraquinon glycosides
 - 3) ☒ Cyanoglycosides
 - 4) ☐ Flavonoid glycosides
- 49) sinalbin is an alkaloidal compound obtained from white mustard and used as local irritant.
- 1) ☐ true.
 - 2) ☒ false.



- 50) Which compound is bufadienolid
- 1) - Digitoxin
 - 2) - K-strophanthosides
 - 3) - G-strophanthosides
 - 4) ☒ Squill
- 51) Cardiac Glycosides have similar pharmacodynamic action but different in their pharmacokinetic including cardiotonic activity
- 1) - true.
 - 2) ☒ false.
- 52) which compound is phytoestrogens
- 1) - flavonol
 - 2) - flavanon
 - 3) ☒ isoflavonoids
 - 4) - flavon
- 53) Hesperidin is used
- 1) ☒ to minimise capillary fragility
 - 2) - for diarrhea
 - 3) - protect from UV
 - 4) - All answers are correct

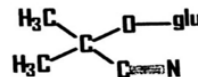
54)



Q54 the structure is

- 1) - Rutin and used to decrease the capillary fragility
- 2) - Hesperidin and used to management of capillary permeability in hypertension
- 3) ☒ Genistin and for menopause syndrome and osteoporosis
- 4) - Disomin and used for menopause syndrome and osteoporosis

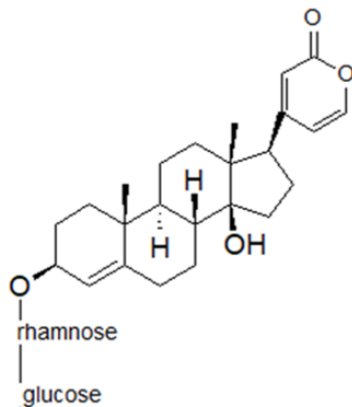
55)



Q55 the structure is amygdalin and obtained from almonds

- 1) - true.
- 2) ☒ false.

56)



Q 56

- 1) - this structure is lanatosieds A, isolated from D. lanata and used as cardiotonic



-
- 2) - this structure is digitoxin, isolated from *D. purpurea*, and used as cardiotonic
- 3) - this structure is K-strophanthodise, isolated from squil, and used as cardiotonic
- 4) + this structure is scillarin A, isolated from squil, and used as cardiotonic