



A report on the faculty female students' fieldtrip to the Naqil Ibn Ghailan area - Nehm - Sana'a Governorate on Thursday, Rajab 20/1445, corresponding to 2/1/2024

The trip was supervised by:

- Prof. Mohammed Abdullah Al-Wosabi
- Dr. Ahmed Mohammed Al-Enwah
- T. Amal Al-Qudami

This fieldtrip was intended for female faculty students in all majors and levels.

The movement began in front of the faculty at 8:00Am.

The main stops are:

- ❖ **1st stop:** Shibam Al-Gheras area. At this site, the students viewed the outcrops of Tawilah Group. Many points were explained such as:
 - Stratigraphic relationships of this group with the underlain and overlain rock units.
 - General rules in stratigraphy and historical geology.
- ❖ **2nd stop:** Naqil Ibn Ghailan. The leaders of the trip explained here the geological stratigraphic record of the region that includes the Amran Group (Shuqra and Sabatayn formations), Tawilah Group, and the Yemen volcanics.
- ❖ **3rd stop:** Gypsum quarries at Khulaqat Nehm. The students got to know closely the followings:
 - facies of the Sabatayn Formation (evaporite rocks, shale and various clays) and their depositional environments.
 - The method of exploiting of these rocks by citizens now, and clarify the ideal methods for exploiting.
 - The students noticed the difference in the rock facies of this formation and its stratigraphic relationships with the neighboring rock units.
- ❖ **4th stop:** Bani Shakwan area. Limestone of the Shuqra Formation are outcropping here. The students joined between these rocks and the Tawilah, Sabatayn rock units. Also, they noticed the varicolored limestone (gray, beige, yellowish) and the limestone facies and then they Learn about the reasons for these changes.

The trip ended at 2:30Pm and we arrived at the university at approximately 3:30Pm.

- Many thanks to drivers participating in the trip, Abdullah Al-Qadhi and Mujahed Al-Humaidi from the University's Traffic Department.

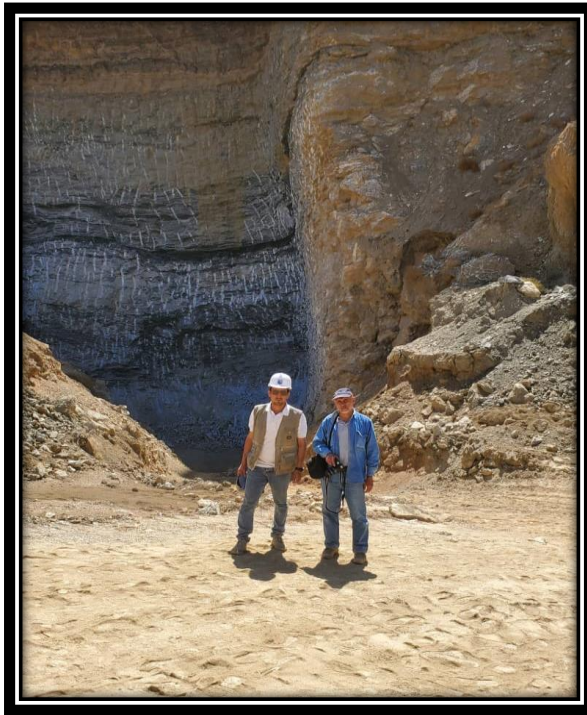
- Many thanks to everyone who contributed to organizing this trip from the college administration and the student affairs department at the university.



محجر الجبس
حوض السبعتين
#كلية البترول.

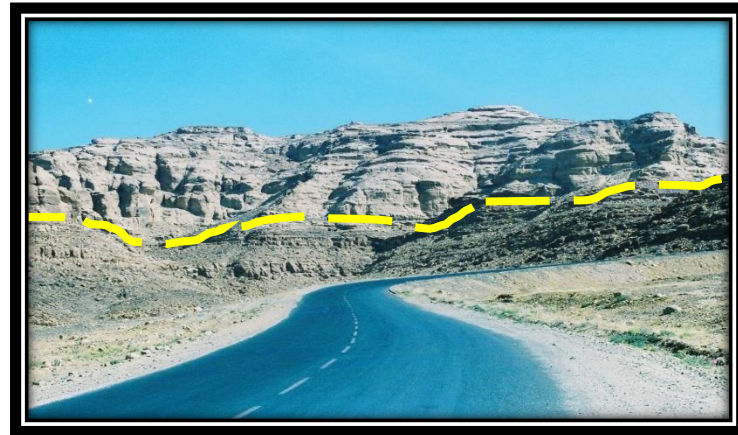


نقيب ابن غيلان





Contact between Tawilah Group and Tertiary Volcanic
"Volcanic caps" at Jabal Arishah



Contact between Tawilah Group and Amran
Group at the bottom of Naqil Ibn Ghailan