

Introduction

The Water and Environment Centre (WEC) was founded in 1999 as an independent centre for scientific and academic excellence in water and environment. The WEC is affiliated to Sana'a University, Yemen and provides research, consultancy services, education and training.

The increased water stress in the country is prompting the development of radical new approaches to water management, as a 'centre of critical water thinking' the WEC has been able to position itself as: a knowledge and research broker in these times of change, allowing for new (local) practical solutions to spread, and as institute for the improvement of human capital.

With the support of the Dutch Government the WEC has established itself as an institute offering: knowledge and research clusters on urban and rural water management; consultancy services; and a graduate programme in IWRM. Furthermore, the WEC has placed itself distinguished as an epicentre of the Yemen water sector, hosting and facilitating the Yemen Water Partnership.

Since 2000, the concept of Integrated Water Resources Management (IWRM) has come to the forefront and is embraced by the Government of Yemen in renewed legislations, policies as well as organisational reform and decentralisation. This comprehensive approach considers the water and environmental situation as a multidimensional socioeconomic, technical and governance challenge; advocating multidisciplinary and local solutions in water and environmental management. These approaches and concepts have been the core to founding of the WEC as well as the development of the services it has to offer, including its IWRM programme.

The centre is now home to a number of researchers, congregates staff members from Sana'a University in its academic programme and has a core group of dedicated staff running the centre's programmes as well as its extensive library, GIS and remote sensing facilities. The centre's community extends beyond the walls of Sana'a University with over 100 partners, alumni and former staff in various private, as well as a number of multilateral and international organisations.



MORE INFO
New Sana'a University Campus
P.O. Box 13886 Sana'a University, Ma'een Office
Sana'a, Yemen
Tel: +967 1 212621 Fax: +967 1 212622
info@wec.edu.ye
www.wec.edu.ye



Water and Environment Centre (WEC) - Brochure

Water and
Environment Centre

WEC vision

The Water and Environment Centre's vision is being a centre of excellence and development for water and environmental studies and research in Yemen and the region, focusing on improving human wellbeing, the natural environment and water resources.

WEC mission and objectives

The Water and Environment Centre's mission is to continuously unlock the potential of Sana'a University academia and researchers in providing integrated know-how on water and environment through education and training as well as applied, relevant and cross-cutting research to tackle major challenges in the water sector within Yemen, regionally and internationally.

Concretising this mission statement, the centre's strategy is formulated and built on three pillars.

1. Providing the water and environment sector with needed expertise and practical solutions through education and training; promoting the coordinated development and management of water resources and the environment (IWRM);
2. Supporting and developing the water and environment sector with applied research and advisory services;
3. Knowledge and information outreach through: sector networking and partnerships; societal engagement through discussions, fora and events (public seminars and workshops); and open access to on- and offline information and data.

What does WEC have to offer?

Education and Training



- Post-Graduate Program in Integrated Water resources Management
- On-the-job training in more than 10 subjects that can be tailored to the wishes of clients and trainees

Research and Advisory Services



The WEC offers the sector practical including technical assistance, as well as comprehensive and fundamental research programmes, academic collaborations including studies, research and scientific publications.

WEC's services to donor agencies, private sector and non-governmental organisations include: project management, general and specialist advice, monitoring and evaluation, and project design. The WEC can also offer information and analytical services through its Geographic Information System (GIS)/ Remote Sensing (RS) computer lab as well as its water field equipment.

Outreach

Partnerships and networks

Yemen Water Partnership; Regional and International University Collaborations; and Professional Networks such as Spate Irrigation Network, CAP-Net and Aware-Net.

Sector and societal engagement

Advocacy, knowledge sharing; awareness raising; meetings; (research) workshops; and conferences.

Information facilities

Library; online repository website (www.yemenwater.org); Irrigation System Data Platform (portal.hydronet.com); information and analytical services through the Geographic Information System (GIS)/ Remote Sensing (RS) computer lab as well as the water field equipment.

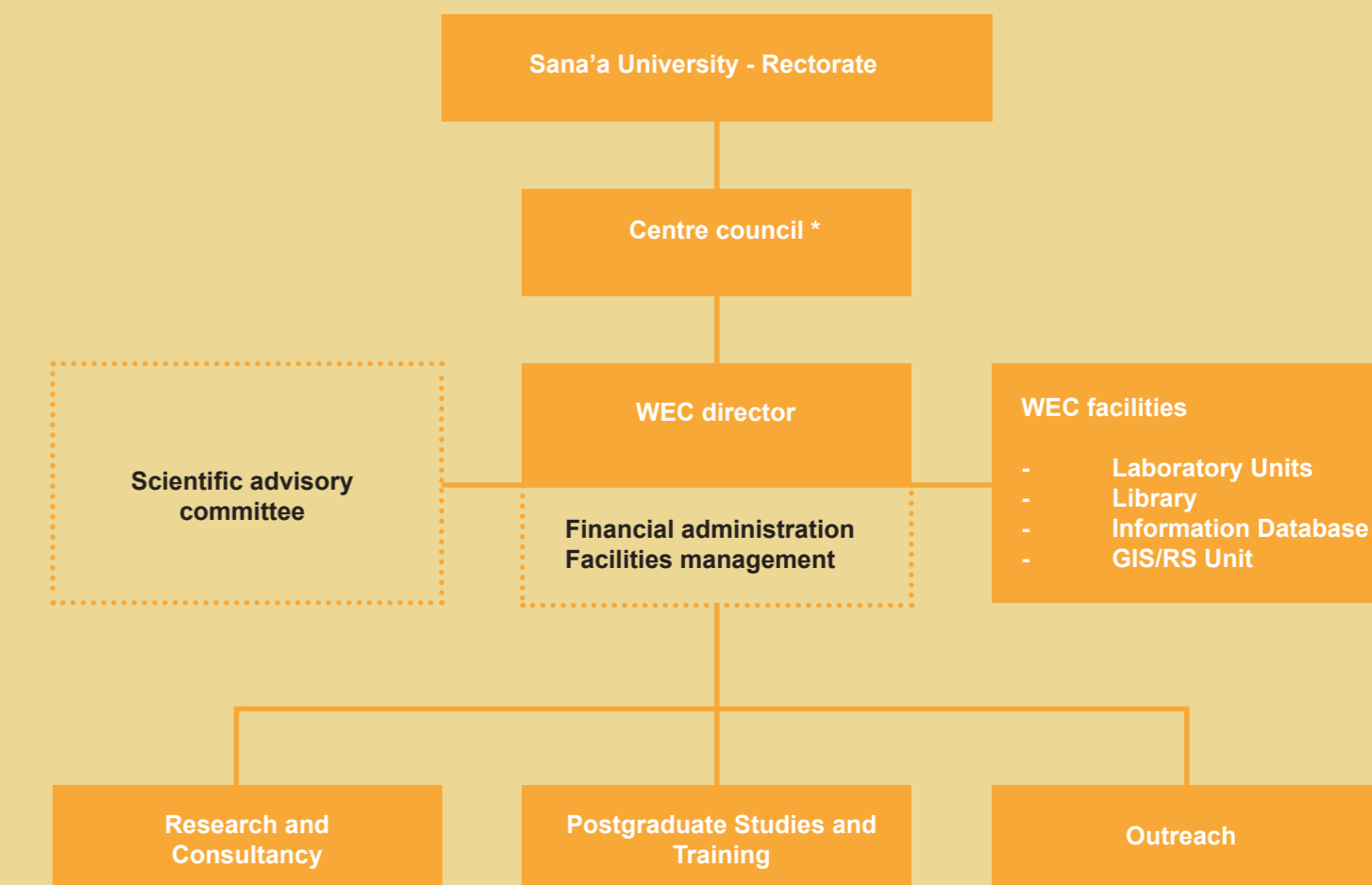


WEC organisation and facilities

The Water and Environment Centre, is an independent centre within Sana'a University. The WEC has a small group of highly competent core-staff responsible for the day-to-day running of the centre, coordination and implementation of the educational program and research, the development of training and advisory service opportunities, and the facilitation of knowledge and information outreach. The WEC also builds on a large group of people and organisations that are or have been directly involved in the Academic (research and educational) program of the WEC and are considered important contributors and advocates of the WEC in the sectors.

The WEC is also the designated organisation in Yemen facilitating the Yemen Water Partnership and hence also houses a modest secretariat for these purposes.

Underneath an overview of the organisation diagram, a full list of all the WEC staff as well as the affiliated academic and professional staff.



* The centre council is chaired by the Rector of the University, and members are:
1) WEC Director (vice chairman); 2) Dean of Faculty of Engineering; 3) Dean of Faculty of Science; 4) Dean of Faculty of Agriculture; 5) Heads of the departments of training, research and local & international relations; 6) Representative of private sector; 7) Representative of Dutch Embassy.