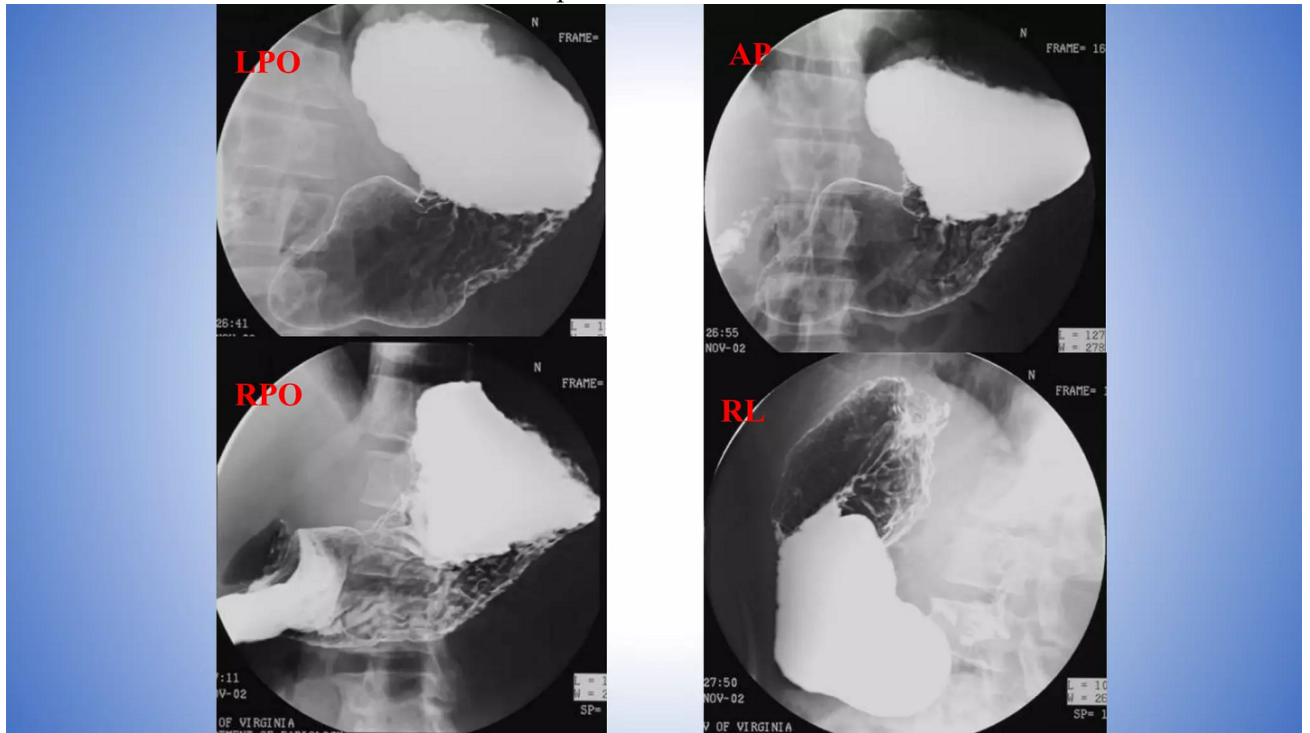




قائمة الاسئلة

(70) التشريح الإشعاعي. - المستوى الثاني - قسم أشعة - كلية الطب والعلوم الصحية - برامج العلوم الطبية التطبيقية - الفترة الثانية - درجة الامتحان
د/ امل محمد يحي محمد الماخذي

- 1) 1- True statement about basic terms of relations
 - 1) - Medial is away from the midline
 - 2) - Contralateral is on the same side of the body
 - 3) - Ipsilateral is on the opposite side of the body
 - 4) Non of the above
- 2) 2- True statement about Planes:
 - 1) - The axial plane (transverse or transaxial plane)
 - 2) - Horizontal plane perpendicular to the long axis of the body
 - 3) - The sagittal plane: vertical plane parallel to the median plane (or midsagittal plane)
 - 4) All of the above
- 3) 3- All of those muscles are rotator cuff of the shoulder except:
 - 1) - Supraspinatus
 - 2) - Infraspinatus
 - 3) Teres major
 - 4) - Subscapularis
- 4) 4- What is the name of this examination in the picture :



- 1) - Single contrast barium enema
 - 2) - Double contrast barium enema
 - 3) - Barium follow through
 - 4) Barium meal
- 5) 5- Wrong statement about anatomy of the forearm :
- 1) - The radius and ulna are long bones that make up the forearm,
 - 2) - In the anatomical position, the radius is found in the lateral forearm, while the ulna is found in the medial forearm.
 - 3) The radius is longer than the ulna

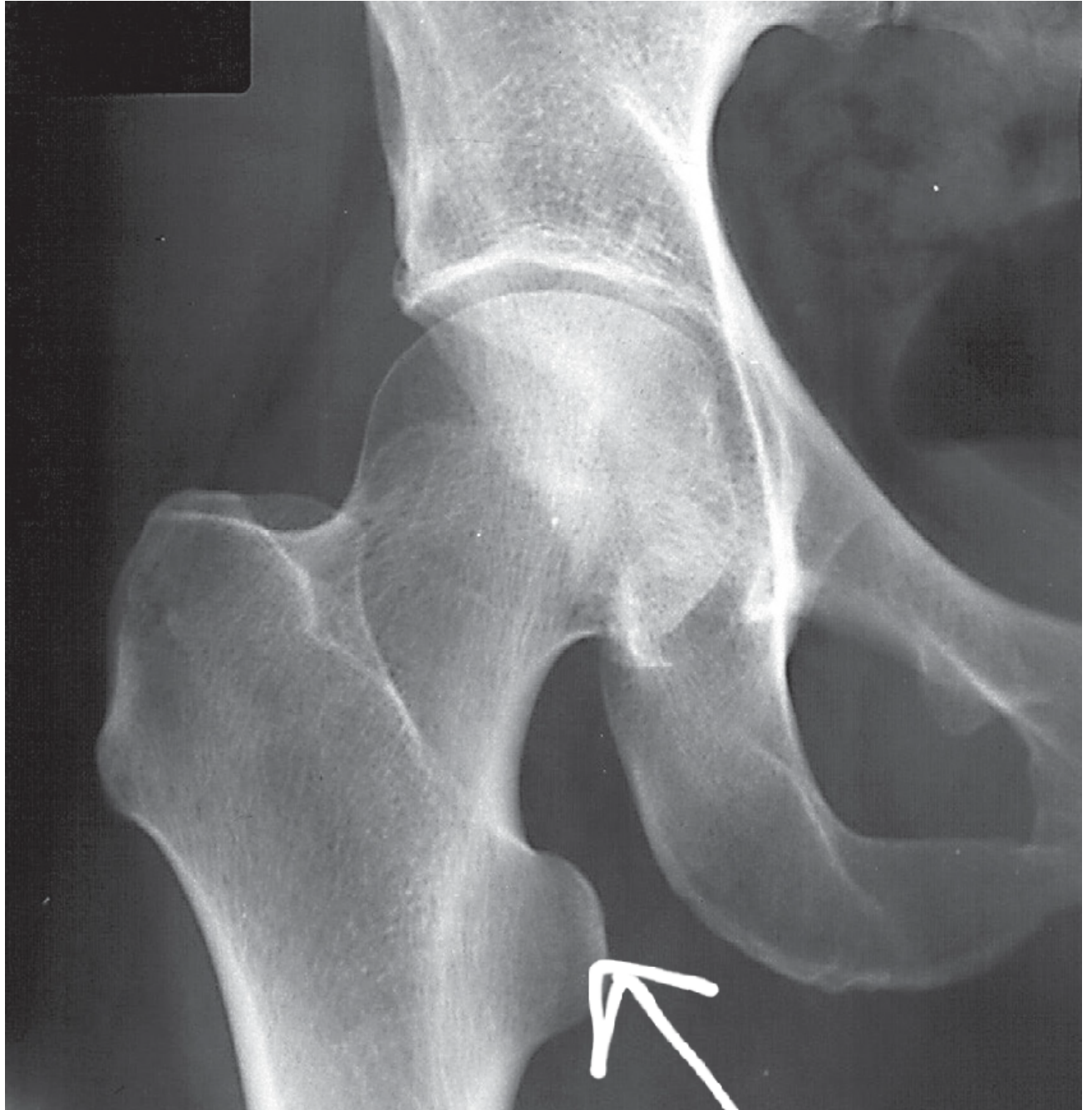


- 4) - Ulna has a large proximal end which articulates with the humerus and a small distal end.
- 6) 6- All statements are true about Olecranon process except:
- 1) - Proximal end of the ulna
 - 2) - Articulates with the distal humerus and the head of the radius.
 - 3) - It bears the olecranon, trochlear notch, coronoid process, radial notch, sublime tubercle and ulnar tuberosity.
 - 4) Non of the above
- 7) 7-Carpal bones are the following except
- 1) - Scaphoid,
 - 2) - Lunate
 - 3) Navicular
 - 4) - Pisiform
- 8) 8-One of the following is thumb joint :
- 1) Trapeziometacarpal (TMC) joint:
 - 2) - Proximal interphalangeal (PIP):
 - 3) - Middle interphalangeal joint
 - 4) - Distal interphalangeal (IP)
- 9) 9-At this x ray the bone fracture was noted at





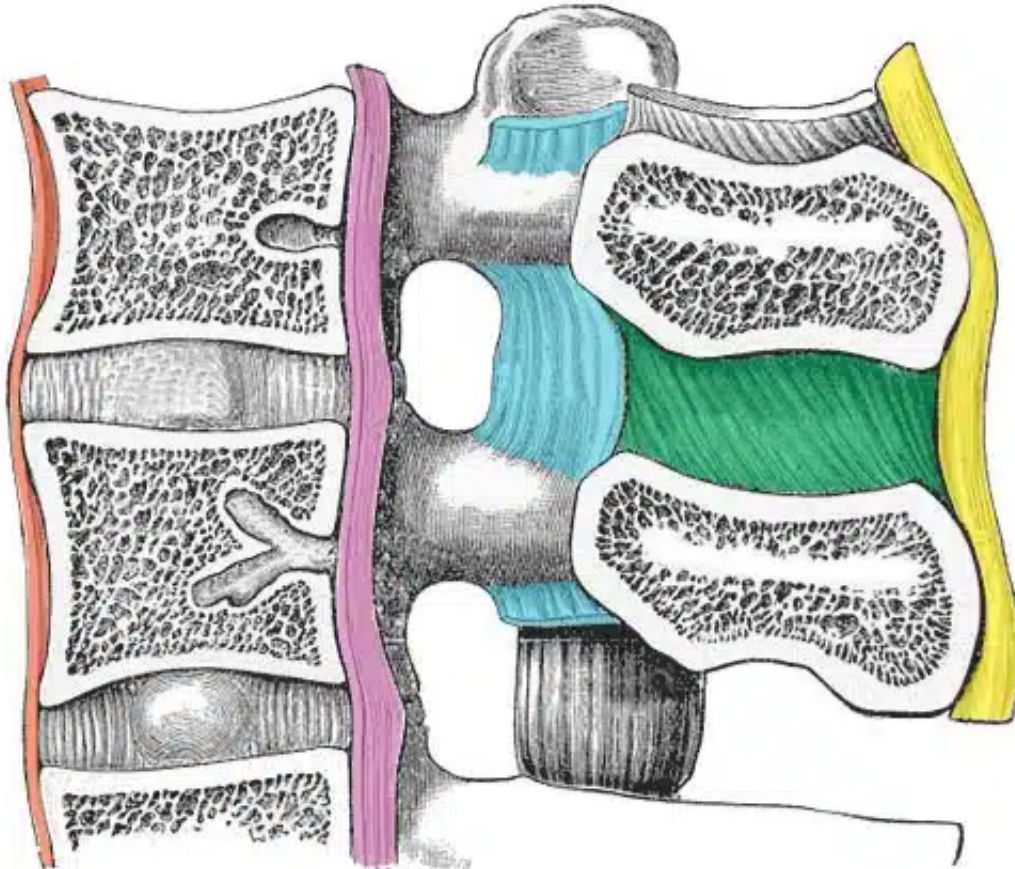
- 1) - Lunate bone
 - 2) - Navicular bone
 - 3) - Pisiform
 - 4) + Scaphoid bone
- 10) 10-- This pointed area in this picture is



- 1) - Head
 - 2) - Neck
 - 3) - Greater trochanter
 - 4) Lesser trochanter
- 11) 11-All are ligaments of the knee joint except::
- 1) Deltoid ligament
 - 2) - Lateral collateral ligament
 - 3) - Anterior cruciate ligament
 - 4) - posterior cruciate ligament
- 12) 12-The posterior process of the vertebra is called
- 1) Spinous processes



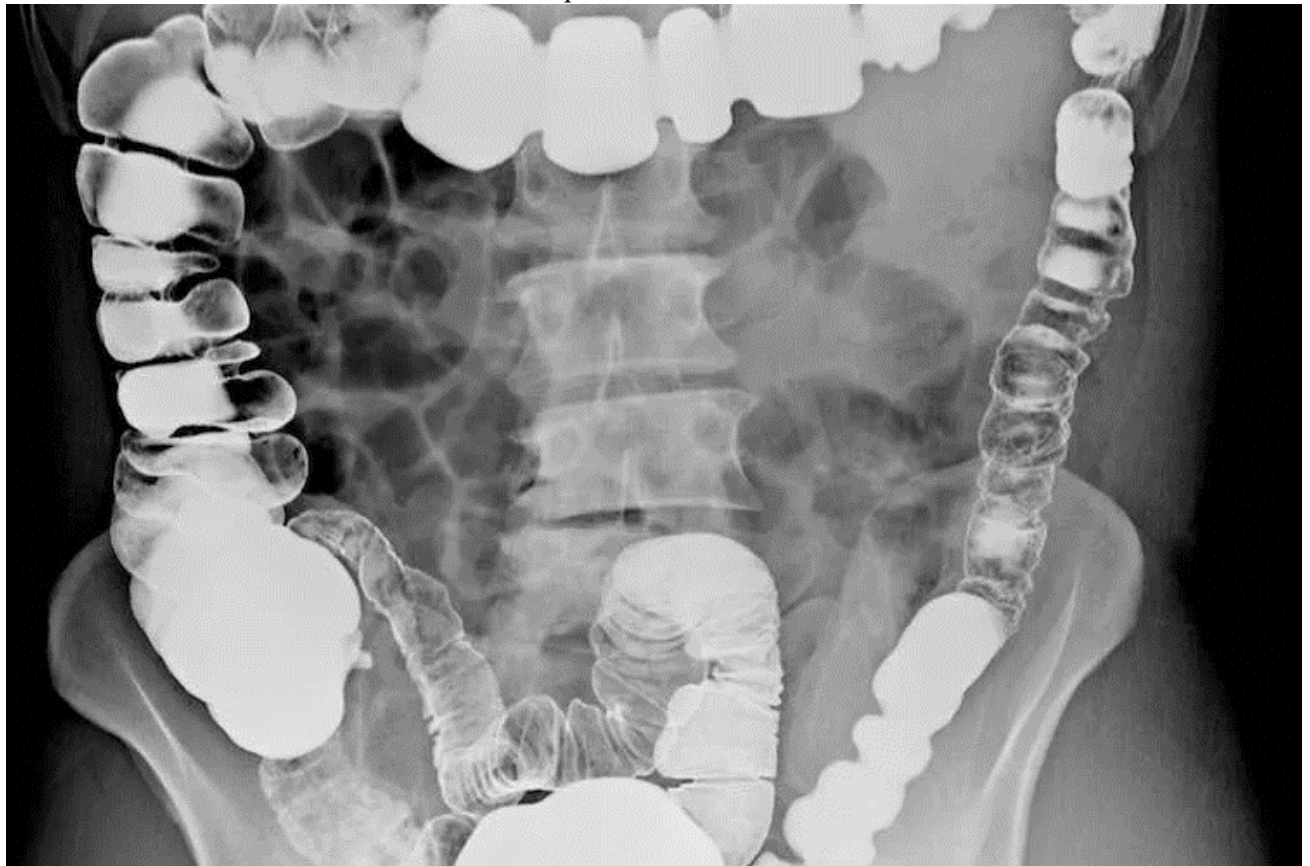
- 2) - Transverse processes
3) - Pedicles
4) - Lamina
- 13) 13-Which statement is true about the cervical spin :
- 1) - The lesser range of motion
2) + The main function of the cervical spine is to support the weight of the head as well as protection of the spinal cord, arteries and nerves that travel from the brain to the body
3) - The 2nd vertebra (C2) is the ring-shaped atlas that connects directly to the skull.
4) - The atlanto-axial joint is responsible for nodding or “yes” motion of the head.
- 14) 14-All statement is true regarding Sacrum spin except:
- 1) - The sacrum is the section located at the base of the spine.
2) - It does not have discs separating the vertebrae, .
3) - The pelvis is connected to the spinal column at the sacrum section
4) + Non of the above .
- 15) 15-Lumbar vertebrae have the following criteria except:
- 1) - Very large vertebral bodies, which are kidney shaped
2) - They haven't transverse foramina,
3) + Have costal facets
4) - Have no bifid spinous processes
- 16) 16-The name of this ligament colored by pink is:



- 1) - Ligamenta Flava
2) + Posterior longitudinal ligament
3) - Anterior longitudinal ligament



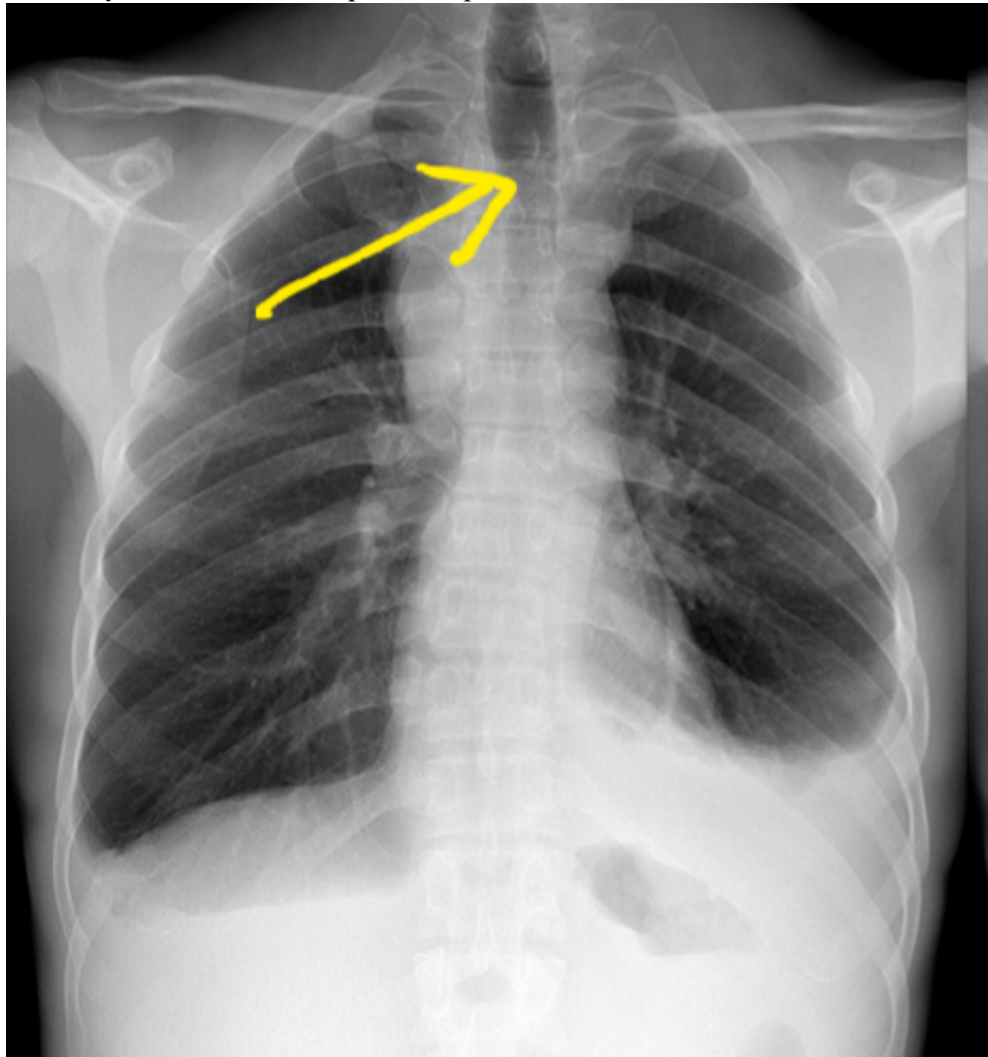
- 4) - Supraspinatus ligament
- 17) 17-The name of suture marks the borders between the parietal and occipital bones is:
- 1) - Coronal suture
 - 2) Lambdoid suture
 - 3) - Sagital suture
 - 4) - Parito_occipital suture
- 18) 18-All are foramina of the middle cranial fossa except :
- 1) Juglar foramina
 - 2) - foramen Vesalii
 - 3) - foramen spinosum
 - 4) - foramen ovale
- 19) 19-Standard projections of the skull are the following:
- 1) - AP or PA
 - 2) - Lateral
 - 3) - Towne
 - 4) All the above
- 20) 20-True statement about the lower Oesophageal Sphincter:
- 1) - The lower oesophageal sphincter is located at the the level of L1 vertebra,
 - 2) - The sphincter is classified as a anatomical sphincter
 - 3) - Oesophagus enters the stomach at an right angle.
 - 4) Non of the above
- 21) 21-What is the name of this examination in the picture :



- 1) Double contrast barium enema
- 2) - Barium follow through



- 3) - Double contrast barium meal
4) - Single contrast barium meal
- 22) 22-All the following statements are true regarding transverse Colon except:
- 1) - The transverse colon extends from the right colic flexure to the spleen
2) - The transverse colon is the least fixed part of
3) - Unlike the ascending and descending colon, the transverse colon is intraperitoneal and is enclosed by the transverse mesocolon.
4) Non of the above
- 23) 23-All of the following are contents of superior mediastinum except:
- 1) - Thymus
2) - Trachea,
3) - Esophagus,
4) Heart
- 24) 24-Regarding PA projection of the chest,which wrong statement:
- 1) - The posteroanterior (PA) view is the standard frontal chest projection
2) - The x-ray beam traverses the patient from posterior to anterior
3) - It is performed standing and in full inspiration with the patient hugging the detector to pull the scapulae laterally
4) Non of the above
- 25) 25- The yellow arrow in this picture is pointed to:





- 1) Trachea
2) Rt lung
3) Lt lung
4) Heart
- 26) 26- What is the name of the part of fallopian tube pointed by yellow arrow:
1) Interstitial portion
2) Isthmus
3) Ampulla portion
4) Infundibulum
- 27) 27-Indications of the IVP exam all the following except:
1) kidney stones
2) enlarged prostate
3) congenital anomalies of the urinary tract
4) Non of the above
- 28) 28- The name of this study is,:



- 1) Hystrosalpingography
2) Intravenouspyelography
3) Mylogram
4) None of the above
- 29) 29-.. What is the area on the ulna articulates with the head of the radius:
1) Trochlear notch
2) Radial notch
3) Olecranon
4) Radial process
- 30) 30-Which of the following bones ,the radius not articulate with?
1) Ulna
2) Humerus
3) Scaphoid
4) Pisiform
- 31) 31-All of the following can be diagnosed by simple radiography for GB pathology except::
1) GB stones (90%)
2) Porcelain GB
3) Emphysematous GB
4) Milk of calcium bile
- 32) 32- Main role of kidneys in the body is:





- 1) - To regulate fluid volume
- 2) - Maintain electrolyte balance
- 3) - Remove waste products through the filtering of blood and production of urine.
- 4) All of the above

33) 33-The name of this structure pointed by arrow is



- 1) - Calyx
- 2) - Ureter
- 3) Renal pelvis
- 4) - Pyramid

34) 34- An organ of the immune system found in the left hypochondriac region

- 1) - Pancrease
- 2) Spleen
- 3) - Liver
- 4) - Dudenum

35) 35- Which statement is wrong about kidney:

- 1) - a) Kidneys are retroperitoneal organs lying against the posterior abdominal wall at the T12-L2 level.
- 2) - b) They have superior and inferior poles, medial and lateral margins.
- 3) c) Kidneys are intraperitoneal organs lying against the posterior abdominal wall at the T12-L2 level.
- 4) - d) Blood vessels enter through the kidney hilum.