



قائمة الاسئلة

امتحان نهاية الفصل الدراسي 2025 / 2024 م - للعام الجامعي 1446 هـ - الموافق -2025/2024 م-الطب :: الاحياء للعلوم الصحية-الأول- علوم  
د. أميرة علي محمد الحارثي

- 1) The movement of digested food from the blood to the cells
  - 1) - Egestion
  - 2)  Assimilation
  - 3) - Absorption
  - 4) - Digestion
- 2) The enzymes that break down starch
  - 1) - Pepsin
  - 2) - Erpsin
  - 3) - protase
  - 4)  Amylase
  - 5) -
- 3) During digestion, bicarbonate produce from -----
  - 1)  Pancreas
  - 2) - Liver
  - 3) - Stomach
  - 4) - Mouth
- 4) Separate right and left side of the heart
  - 1) - Aorta
  - 2) - Coronary artery
  - 3)  Septum
  - 4) - Vena cava
- 5) Vessels that carry deoxygenated blood called -----
  - 1) - Capillaries
  - 2)  Veins
  - 3) - Arteries
  - 4) - All
- 6) Hormone that can be water soluble or lipid soluble known as-----
  - 1) - Steroid
  - 2)  Amine
  - 3) - protein
  - 4) - Peptide
- 7) Neurons that receive stimuli called
  - 1)  Sensory neurons
  - 2) - Motor neurons
  - 3) - Connector neurons
  - 4) - Relay neurons
- 8) Cells that produce histamine
  - 1) - Neutrophils
  - 2)  Basophils
  - 3) - Eosinophils
  - 4) - Lymphocytes
- 9) Damage in the frontal lobe cause \_\_\_\_\_
  - 1) - Aphasia
  - 2) - Agnosia
  - 3)  Amnesia
  - 4) - Margine



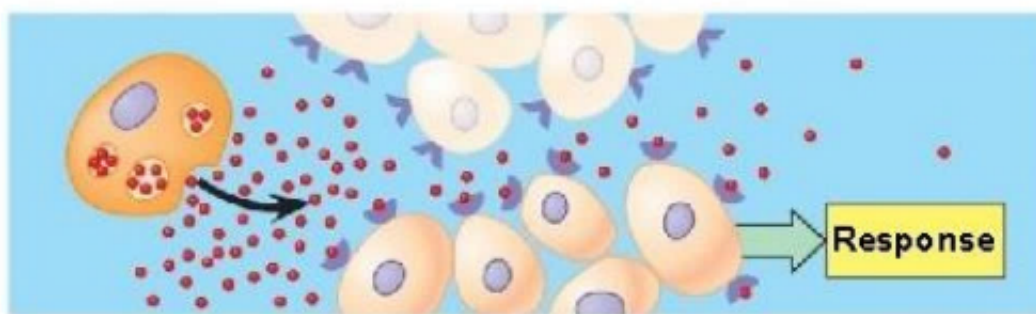


- 10) Valve between right atrium and right ventricle -----.
- 1) - Mitral
  - 2) - Pulmonary
  - 3) - Bicuspid
  - 4)  Tricuspid
- 11) Mastication happened in-----
- 1) - Small intestine
  - 2)  Mouth
  - 3) - Liver
  - 4) - Pancreas
- 12) Breakdown of amino acid then combined with CO<sub>2</sub> form\_\_\_\_\_
- 1) - Uric acid
  - 2) - Creatinine
  - 3)  Urea
  - 4) - protein
- 13) Breaks down polypeptide to peptide
- 1) - Pepsine
  - 2)  Trypsin
  - 3) - Amylase
  - 4) - Lipase
- 14) The last layer of kidney called .....
- 1) - Medula
  - 2)  Renal pelvis
  - 3) - Cortex
  - 4) - Ureter
- 15) A signaling cells that activate itself called
- 1) - Paracrine
  - 2) - Endocrine
  - 3)  Automated
  - 4) - Neurohormones
- 16) Movement of digested food from small intestine to blood called-----
- 1) - Nutrition
  - 2)  Absorption
  - 3) - Digestion
  - 4) - Excretion
- 17) Pulmonary circuit, between heart and -----
- 1) - Body
  - 2) - liver
  - 3) - brain
  - 4)  lungs
- 18) Stimulate water reabsorption by kidney
- 1) - Oxytocin
  - 2) - Cortisol
  - 3)  Antidiuretic hormone
  - 4) - Estrogen
- 19) Promotes milk production
- 1) - Calcitonin
  - 2)  Prolactin
  - 3) - Insulin

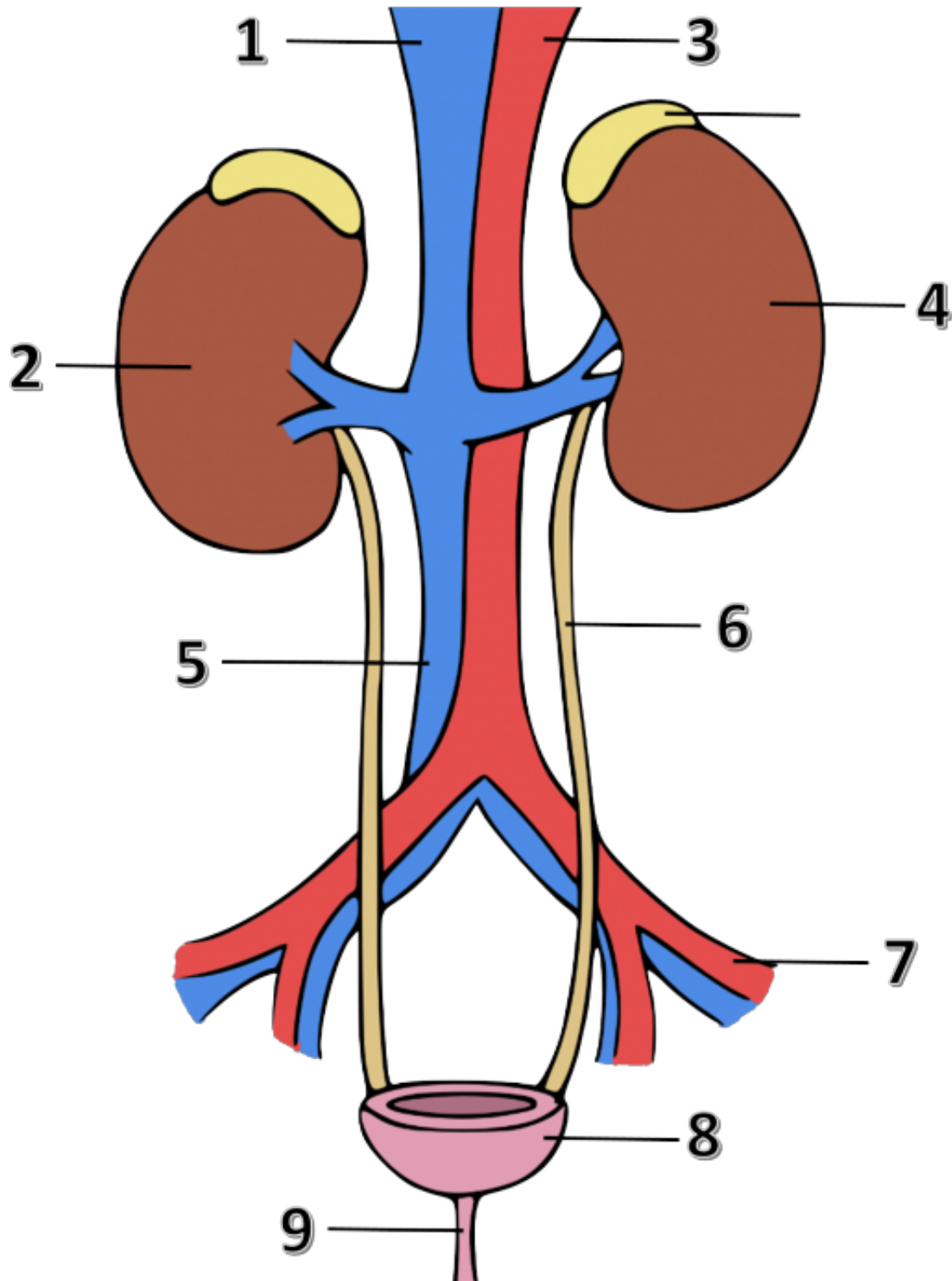




- 4) - Androgens
- 20) Glucagon hormone produce from
- 1)  Pancreas
  - 2) - Ovary
  - 3) - Estrogen
  - 4) - Pineal gland
- 21) Reduce blood glucose level
- 1) - Calcitonin
  - 2)  Insulin
  - 3) - glucago
  - 4) - Aldosterone
- 22) Progestins hormone produce from
- 1)  Ovary
  - 2) - Testes
  - 3) - Adrenal
  - 4) - Pituitary
- 23) Adrenal gland produce-----hormone
- 1)  Aldosterone
  - 2) - Cortisol
  - 3) - Andorgens
  - 4) - Insulin
- 24) Melanocyte hormone produced from
- 1) - Pituitary posterior
  - 2)  Pituitary anterior
  - 3) - Hypothalamus
  - 4) - Pineal gland
- 25) Increase blood Ca<sup>++</sup> level
- 1)  Parathyroid
  - 2) - Thyroid
  - 3) - Calcitonin
  - 4) - Adosterone
- 26) The figure represents .....signaling

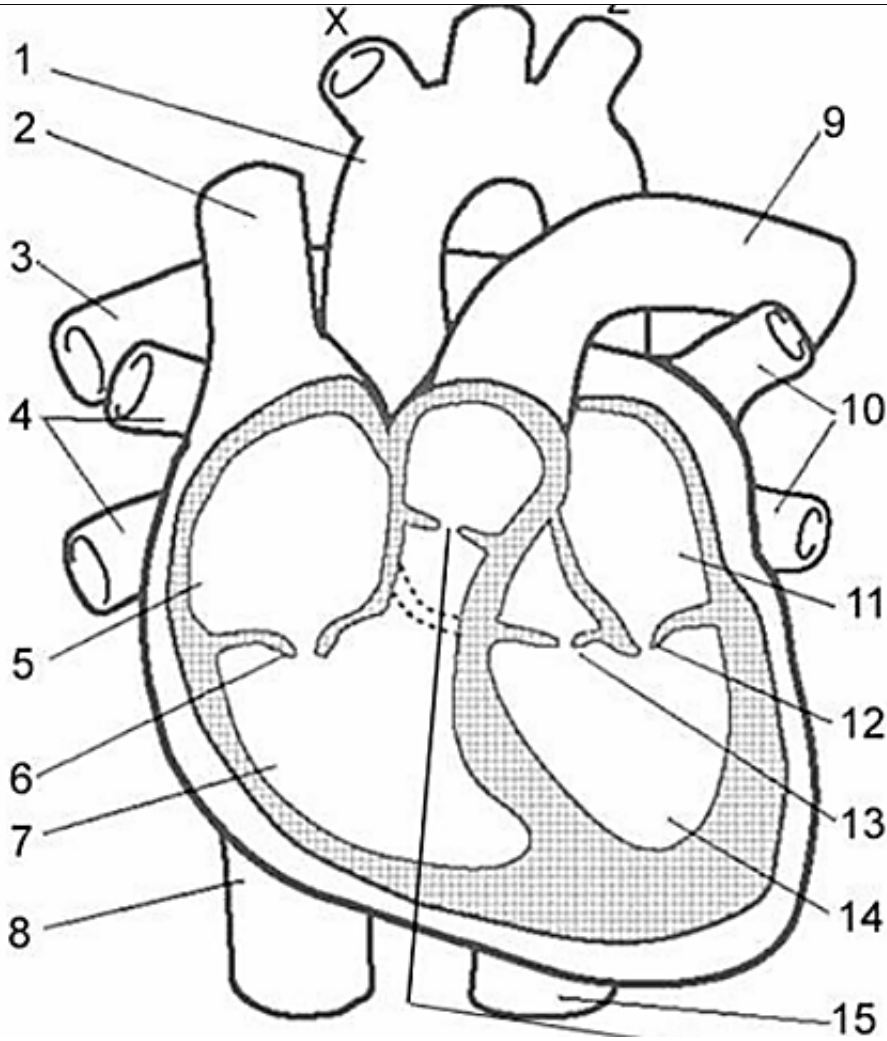


- 1) - Automated
  - 2)  Paracrine
  - 3) - Neurotransmitters
  - 4) - Endocrine
- 27) Nounber (9) in the figure represent \_\_\_\_\_



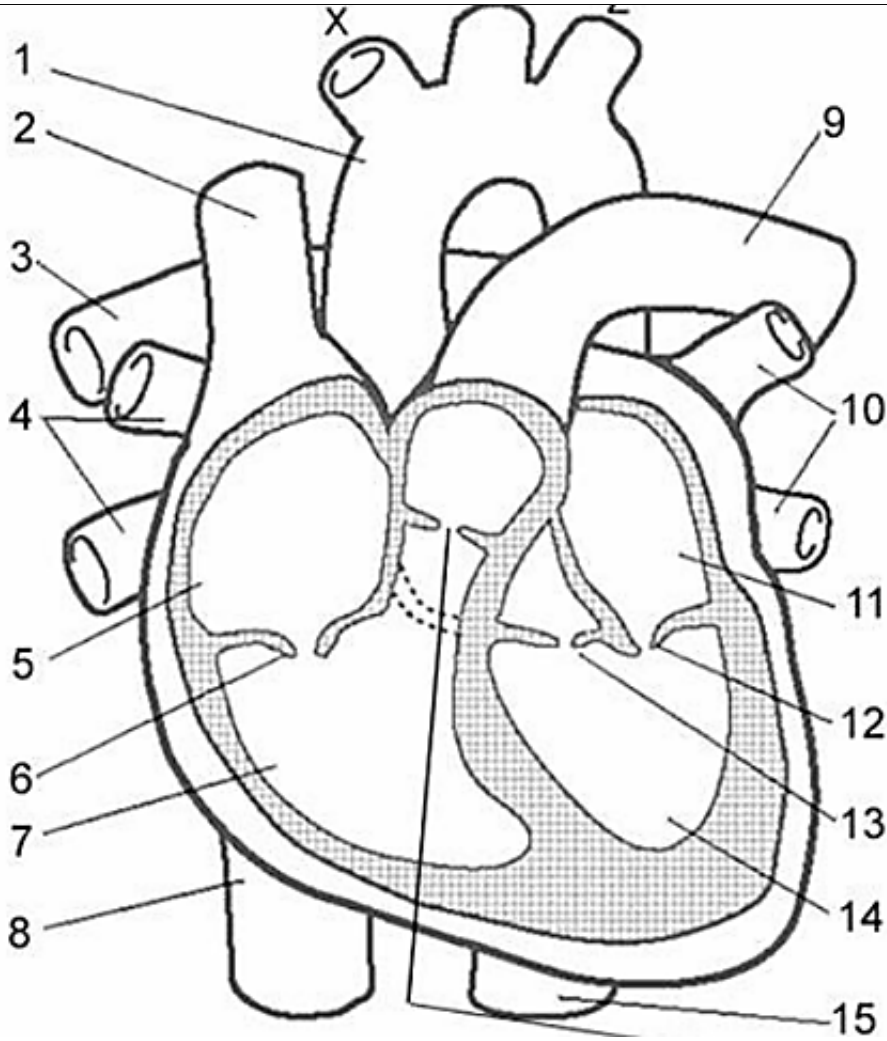
- 1) - Ureter
- 2) - Bladder
- 3) + Urethra
- 4) - Uterus

28) The right ventricle is labeled with number \_\_\_\_\_



- 1) - 5
- 2) + 7
- 3) - 11
- 4) - 14

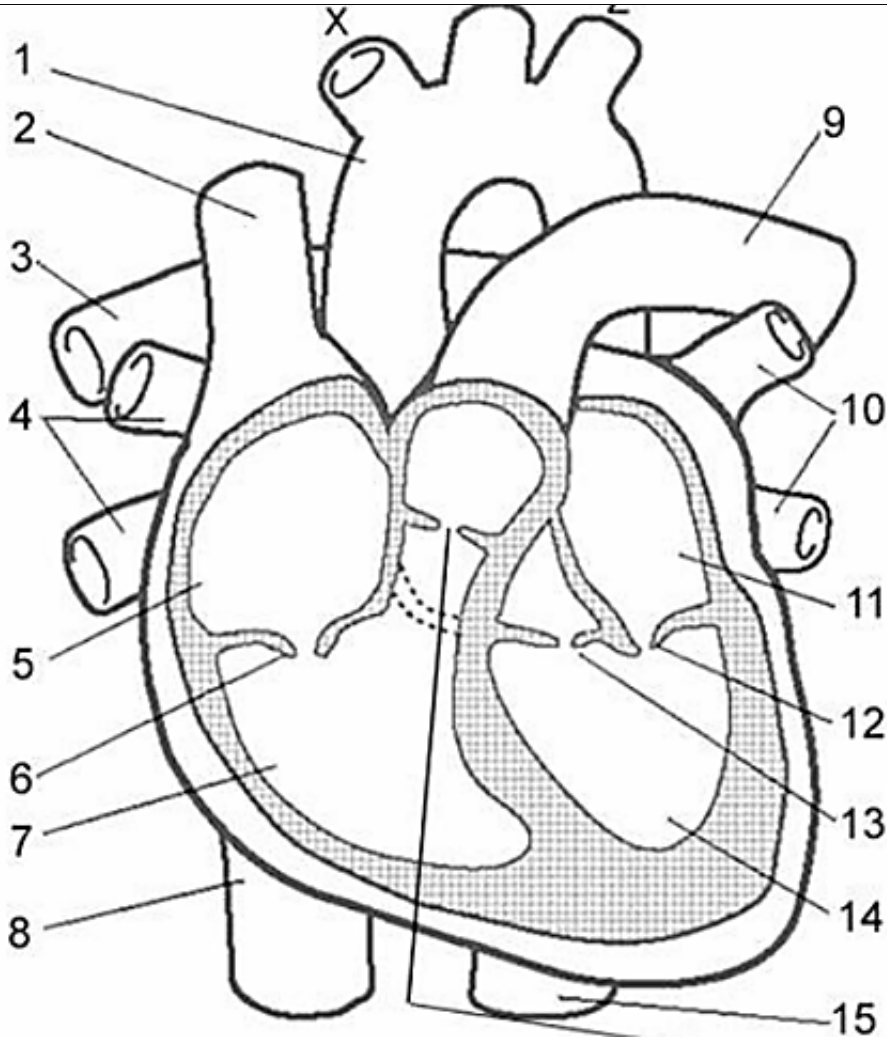
29) The vena cava labeled with number \_\_\_\_\_



- 1) - 1
- 2) + 2
- 3) - 9
- 4) - 10

30) Mitral valve labeld with the number

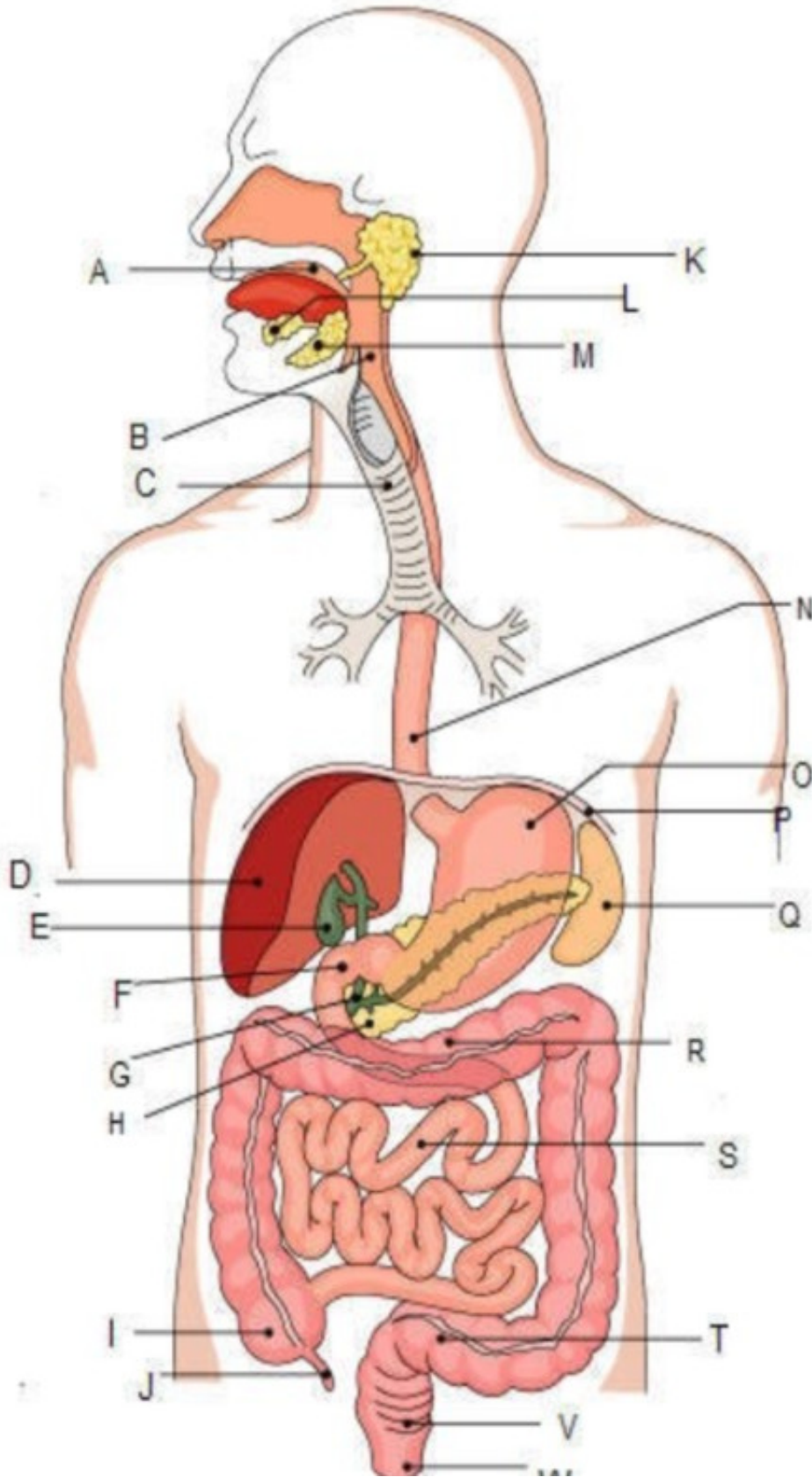




- 1) - 6
- 2) - 11
- 3) + 12
- 4) - 13

31) The first part in which proteins start to digest labeled with letter -----





- 1) - A
- 2) + O



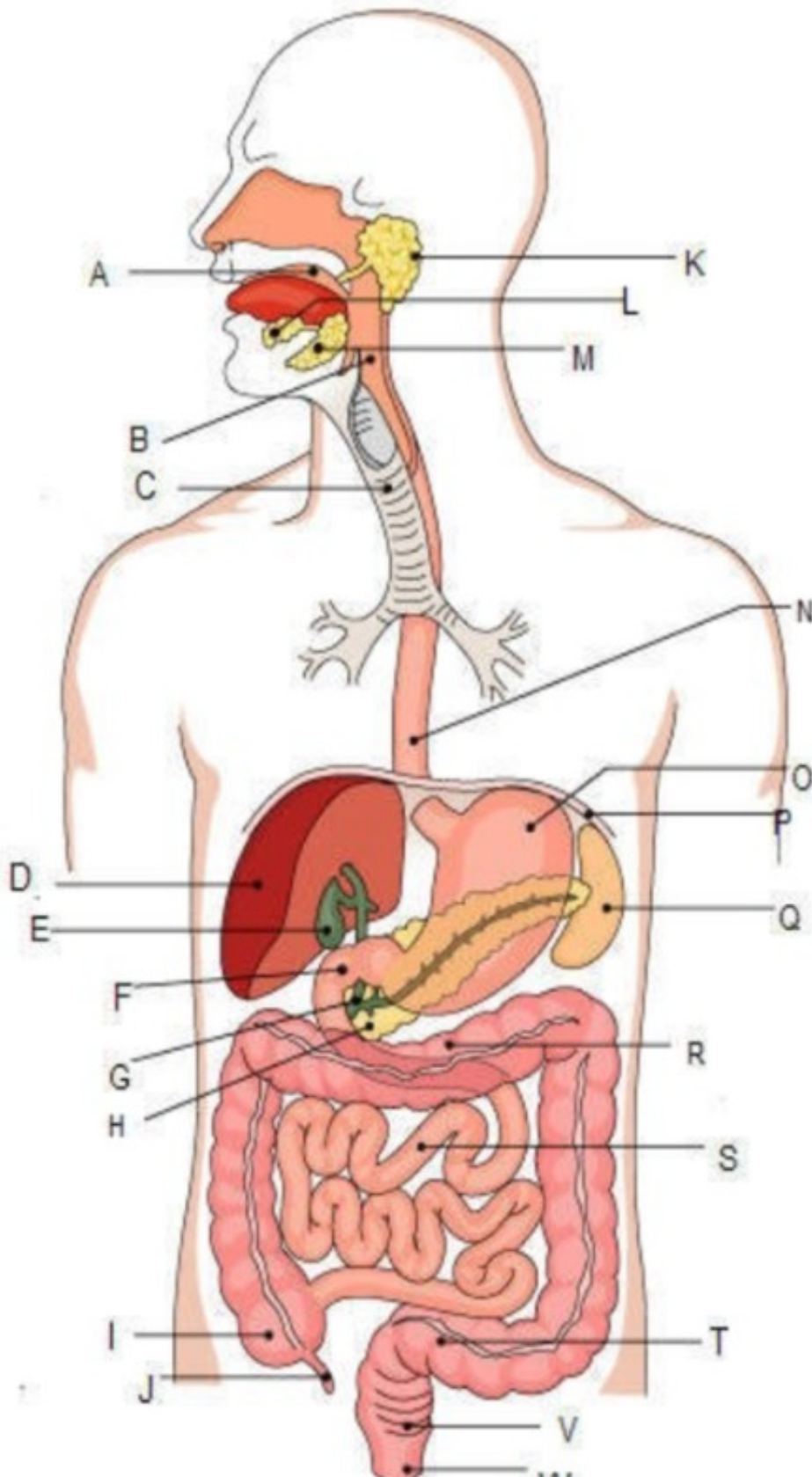




3) - F

4) - S

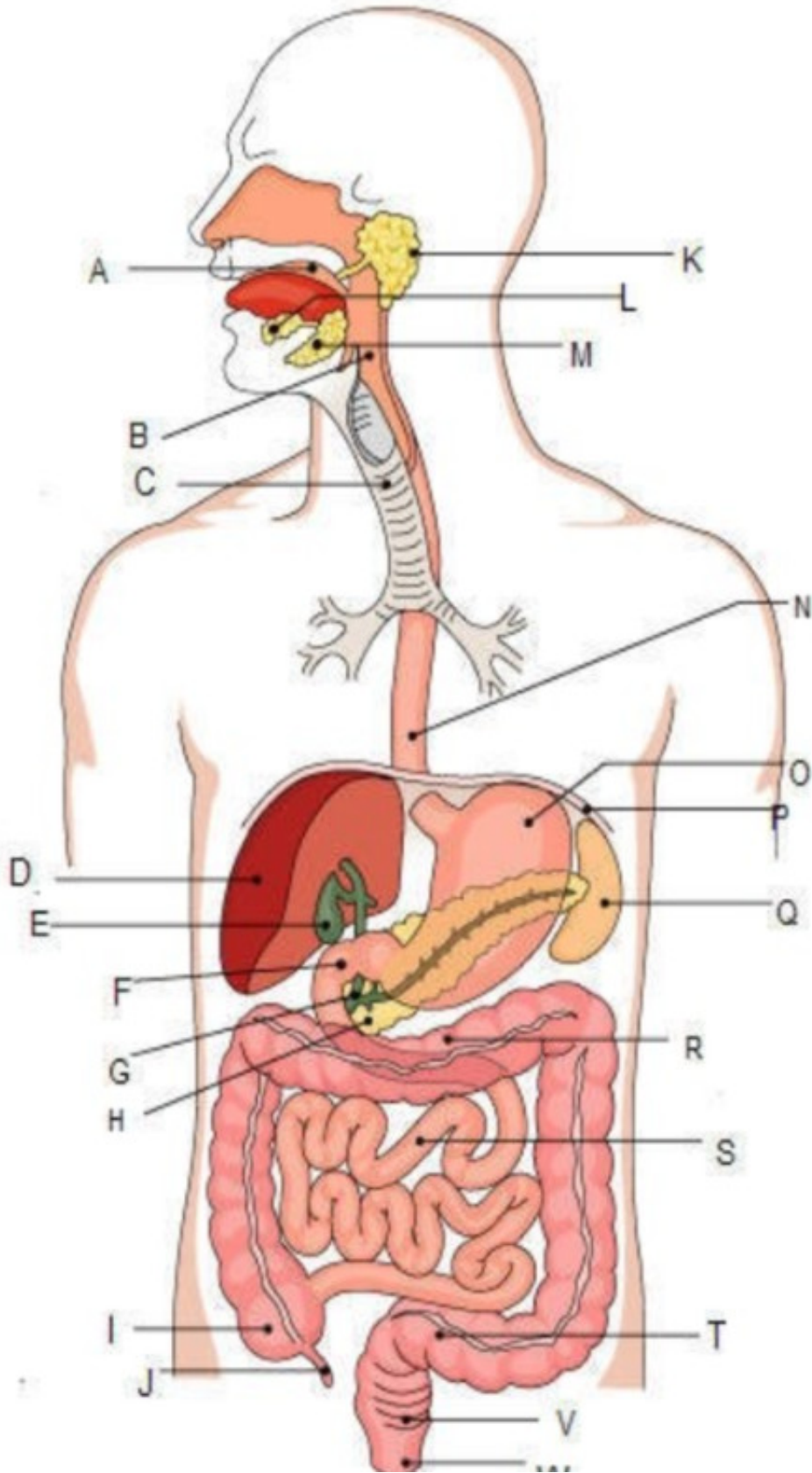
32) The Gallbladder labeled with letter \_\_\_\_\_





- 1) - D
- 2) + E
- 3) - F
- 4) - G

33) The esophagus labeled with letter \_\_\_\_\_



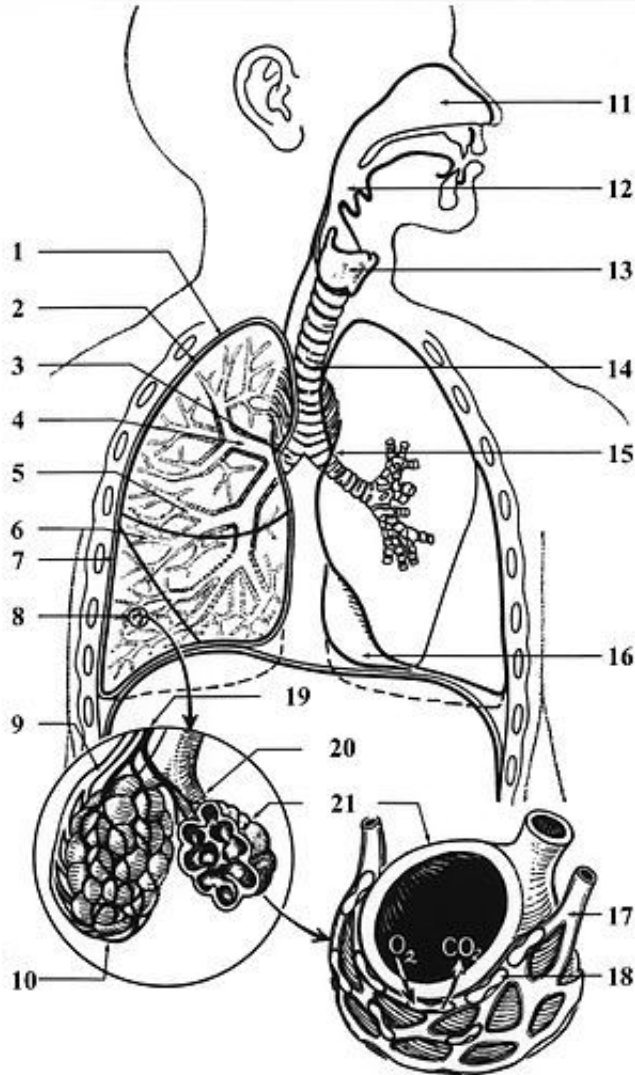
- 1) - A
- 2) - C





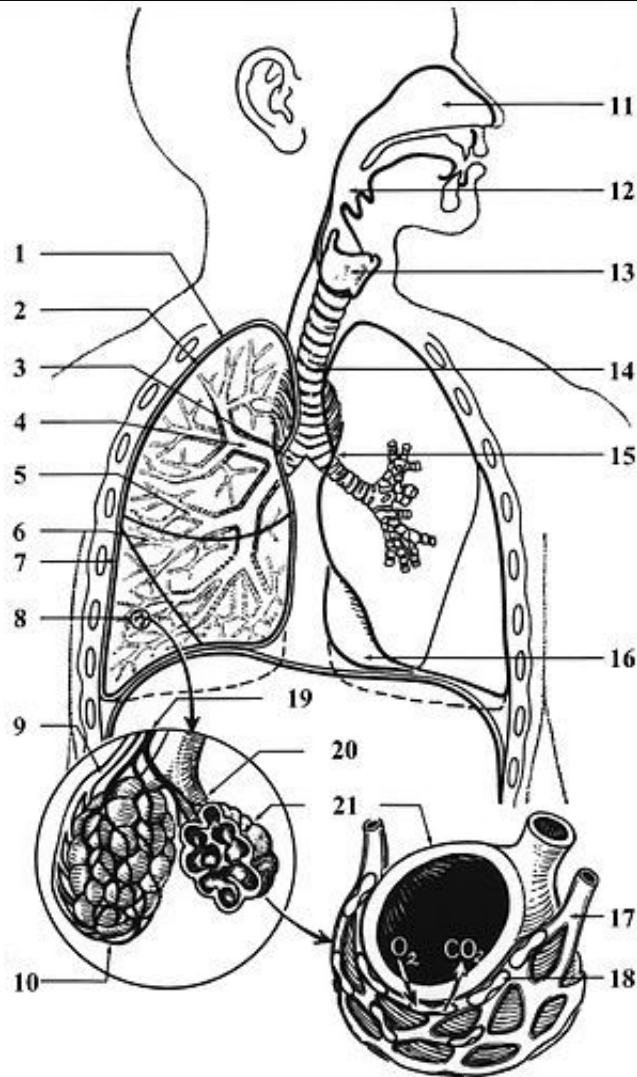
- 3)  N
- 4)  O

34) The airways that lead from the trachea into the lungs., labeled with number-----



- 1)  1
- 2)  2
- 3)  3
- 4)  4

35) Number (8) represent which part of respiratory system?



- 1)  Alveoli
- 2)  Larynx
- 3)  Trachea
- 4)  Bronchioles

36) Energy is obtained from food by a process called .....(A).....while, the intake of oxygen and output of carbon dioxide at a respiratory surface is called -----(B-----.

- 1)  Respiration, Excretion
- 2)  Respiration, Gas exchange
- 3)  Gas exchange, Respiration
- 4)  Excretion, Egestion

37) A particularly intense form of headache

- 1)  Migraine
- 2)  Parkinson's Disease
- 3)  Amnesia
- 4)  Cerebral palsy

38) The way all organs and systems of the body work efficiently together

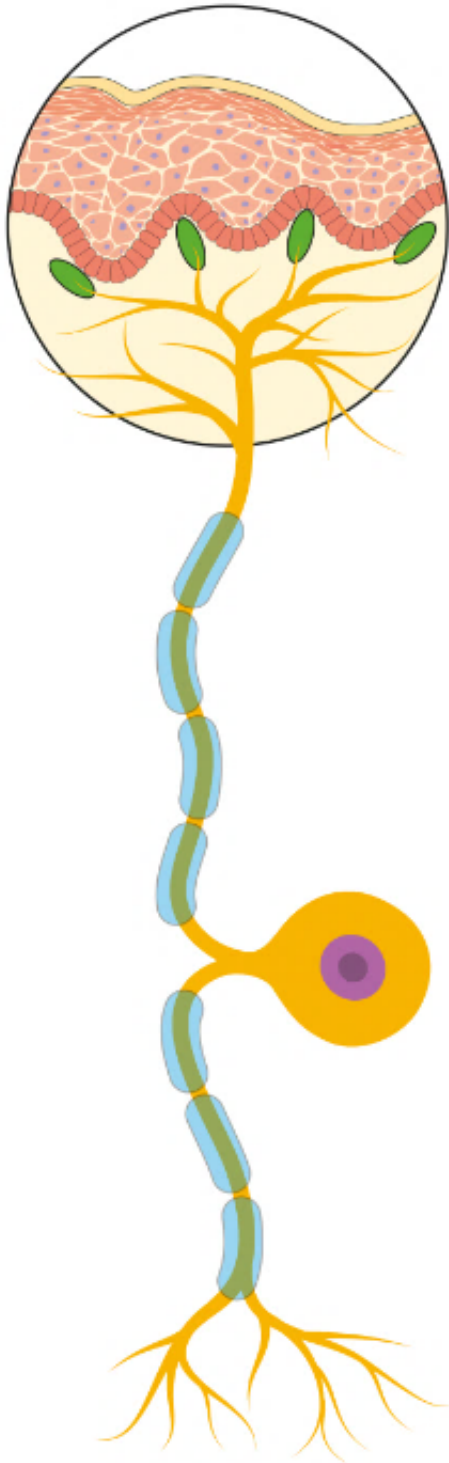
- 1)  Hormones
- 2)  Nerve impulse





- 3)  Coordination  
4)  Endocrine system
- 39) Too little food can result in.....
- 1)  Starvation  
2)  Coronary heart disease:  
3)  Obesity  
4)  Kwashiorkor
- 40) people how eat plant or animal product only
- 1)  Vegan diets  
2)  Vegetarian  
3)  Balance diet  
4)  Diet
- 41) Deficiency in Vitamin (C) lead to-----
- 1)  Anaemia  
2)  Rickts  
3)  Scurvy  
4)  Dehydration
- 42) Contain million of nephrons
- 1)  Medulla  
2)  Cortex  
3)  Renal pelvis:  
4)  Renal vein
- 43) The figure represent -----neuron





- 1) - Motor
- 2) - Relay
- 3) + Sensory
- 4) - Intermediate

44) The gaseous exchange surface must have:

- 1) - shorter distance to diffuse
- 2) - moist – allow gases to dissolve



3) - large surface area -

4)  All

45) Fragment cell that stop bleeding

1) - Erythrocytes

2) - Leukocytes

3)  Platelets

4) - Lymph

